

**UNLOCKING THE ORCHIDACEAE COLLECTION
OF THE “D. BRANDZA” HERBARIUM (BUC):
A STUDENT-DRIVEN COLLABORATIVE EFFORT**

BĂLAN Angela-Laura¹, ANDRA Bianca-Ioana¹,
CAMEN-COMĂNESCU Petronela^{2*}, URZICEANU Mihaela¹

Abstract: This paper presents the specimens belonging to the Orchidaceae family housed in the Herbarium of the Botanic Garden “D. Brandza”, University of Bucharest (BUC), in an effort to support fellow botanists and encourage new research initiatives. All specimens were digitized and the information on the labels was logged in the herbarium database, with the help of student volunteers. This collection contains 602 specimens belonging to 21 genera and 64 species, among which two species are of community interest (Natura 2000). The specimens were gathered by 74 collectors, between 1901 and 2023. The data extracted will hopefully provide valuable insights into Romania’s biodiversity.

Keywords: Orchid family, Herbarium specimens, digitization, volunteers, BUC

Received: 28 October 2024 / Accepted: 04 November 2024

Introduction

This article aims to bring attention to the orchid collection within BUC Herbarium. Herbarium primarily serve as a foundation for taxonomic research, facilitating the description, identification, and classification of numerous plant species (Nualart et al. 2017, Besnard et al. 2018). Additionally, the digitization of specimens plays a crucial role in their preservation by minimizing the need for physical handling and transport (De Smedt et al. 2024). Drawing on centuries of research involving herbarium specimens collected globally over time, the digitization process marks the beginning of a new era in which discovery, synthesis, and prediction are driven by digital collection data (James et al. 2017).

The oldest herbarium can be traced back to Bologna, Italy, in the 16th century (Yadav 2020, Cristofolini 2024). Since then, herbaria not only have provided descriptive information, but also details of a spatial and temporal nature, with many contributions in other fields such as history, anthropology, ecology, and education (Nualart et al. 2017).

Nowadays, specimens are used in areas that early botanists could not have imagined: in molecular studies for DNA analysis, in phytochemistry for the protection of plants against pests, and, last but not least, they provide carbon isotope ratios for climate change studies (Funk 2003).

¹ University of Bucharest, Faculty of Biology, 1-3 Intr. Portocalelor, 060101 – Bucharest, Romania

² University of Bucharest, Botanic Garden “D. Brandza”, Șos. Cotroceni 32, 060114 – Bucharest, Romania

*Correspondence: petronela.comanescu@bio.unibuc.ro

As science has progressed, the need for herbaria has increased (James et al. 2017). At the moment, according to the Index Herbariorum (n.d.), no fewer than 3,567 herbaria can be identified worldwide, home to about 396 million specimens (New York Botanical Garden, n.d.).

Within the herbarium of the Botanic Garden “D. Brandza” can be found a collection of approximately 520,000 specimens of vascular plants, bryophytes, algae, lichens, and fungi (Botanic Garden “D. Brandza”, n.d.). In order to enhance accessibility to the collections, not only for students or researchers, but also for the wider public, the herbarium is currently undergoing re-inventory and digitization (Botanic Garden “D. Brandza”, n.d.). Similar to other small herbaria, the digitization process has been a laborious one due to a lack of staff (Harris & Marsico 2017). From handling and preparing herbarium specimens, organizing and labeling collections, verifying the authenticity of species to scanning and entering the information into a database, the help of volunteers is always welcome and sometimes necessary to the evolution of herbaria.

In our herbarium, digitization started in 2016, and to date, several specimens have been digitized, including the brown algae collection (Urziceanu et al. 2017), red algae collection (Urziceanu et al. 2018), and the threatened vascular plant collection (Camen-Comănescu et al. 2020). To these collections, we now add the Orchidaceae family, which, on a global scale, includes some of the most fascinating and diverse flowers, comprising 28,000 species and 850 genera (Gaskett & Gallagher 2018, Royal Botanic Gardens, Kew, n.d.). Of these, 71 species in 26 genera can be identified in Romania (Panțu 1915, De Angelli & Angheliescu 2020).

The world's great herbaria house gigantic collections of orchids. Worth mentioning are the collection at Kew with over 190,000 specimens (Royal Botanic Gardens, Kew, n.d.), the Orchid Herbarium of Oakes Ames, Harvard with 131,000 specimens (Harvard University Herbaria, n.d.) and the Muséum National d'Histoire Naturelle, Paris which hosts over 92,000 specimens (Muséum National d'Histoire Naturelle, n.d.). In Romania, we have identified two other herbaria and respectively universities that published their orchid collections: “Alexandru Beldie” Herbarium (Marin Drăcea National Institute for Research-Development in Silviculture (INCDS) from Bucharest – 139 sheets, 30 species (Pleșca et al. 2021), and Herbarium of “Alexandru Ioan Cuza” University, Iași- 276 herbarium sheets, dating between 1894 and 2005 (Irimia 2012).

Material and methods

The digitization of the Orchidaceae family was carried out in 2024, over a period of two months (August and September), enabled by the first two co-authors of this article, who are student volunteers from the Faculty of Biology, University of Bucharest. This process implied organizing and logging in each herbarium sheet from the Orchidaceae family housed within the BUC Herbarium. Some sheets, due to their age, exhibited signs of deterioration and were retouched where necessary to preserve their integrity.

During the scanning process, both a ruler and a colour square were placed in vacant areas on the sheet. Specimens were scanned using the Herbscan scanner at a resolution of 600 dpi, and the resulting TIF images were transferred to external hardware for secure storage.

The data from each herbarium sheet was organized into a Microsoft Excel database, recording information directly as specified on the labels. The data, presented

in Appendix 1, includes the following fields: Valid name / Taxon name / Country / Region / County / Locality / Toponym / Geographical coordinates / Altitude / Ecology / Day / Month / Year / Legit / Determinavit / Exsiccata / Herbaria / BUC Inventory number. In the database, as well as in Appendix 1, the taxon name is divided in the following fields: genus, species, author, subspecies, variety and form, separated by "/".

The valid taxonomic names were cross verified using Plants of the World Online database (POWO 2024). The valid name is listed first, followed by the name found on the label. In the case of taxon names on the herbarium sheets, no modifications were made to the label transcriptions to preserve the original data and ensure the accuracy of historical records.

The collection location details were based on the information provided on the labels. In instances where only locality data was available, additional geographic details such as region and county were researched based on the position of the respective localities. Some specimens due to their old age were labelled with county names no longer in use, in those instances, the historical name was kept. In some instances where the locality was missing but there was sufficient information in the next section to identify the location, locality was approximated. Those localities will be discussed in “Results and discussion”. Toponyms were kept in the original language, while ecological descriptions were translated into English if not already written in that language or latin. For specimens where the name of the collector or identifier was missing from the label, the designation "unknown" was used. In cases where information was unreadable, it was recorded as "illegible".

The herbarium of origin was also translated into English, while the exsiccata were kept in Latin.

In cases where an inventory number was missing, a new number was assigned, and the specimen was recorded in the inventory log.

Where encountered, after the inventory number, was added the holotype and hybrid formula.

Appendix 1 lists the Orchidaceae specimens from the BUC Herbarium, with 602 specimens classified alphabetically by valid name, while Appendix 2 lists the number of specimens for each valid name (64 total). Appendix 3 depicts the number of specimens attributed to each collector, while in Appendix 4 are recorded the herbarium of provenience and exsiccata.

Lastly, Appendix 5 presents the orchid species of conservation interest in Romania based on the works of Oltean et al. (1994), Boşcaiu et al. (1994), Dihoru & Negrean (2009), Dihoru & Dihoru (1993-1994), as well IUCN Red List of Threatened Species. (n.d.) at both global and European levels, and the Habitats Directive (Mihăilescu et al. 2015). Abbreviations: Endangered (E) Vulnerable (V) Rare (R) Critically Endangered (CR) nt- not threatened V/R- vulnerable/rare LR= Lower Risk EN= Endangered LC- Least Concern NT- Near Threatened.

Results and discussion

The Orchidaceae collection housed at the BUC Herbarium comprises a total of 602 specimens, classified into 21 genera (Fig. 1) and 64 species. A notable mention is the holotype *Epipactis bucegensis* N. Anghelescu, L. Balogh et Mih. Balogh from the collection of Nora Anghelescu (Fig. 2). The genera with the greatest number of specimens are *Dactylorhiza* (102 occurrences), *Anacamptis* (98 occurrences) and *Epipactis* (65 occurrences).

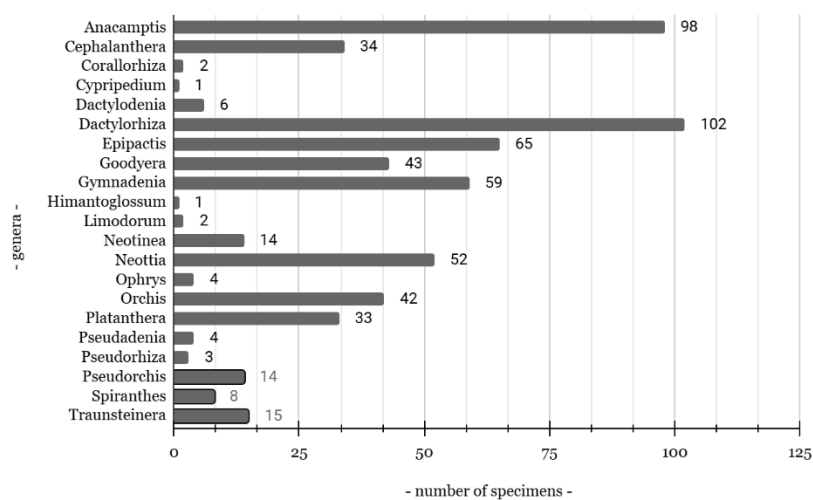


Fig. 1. The number of specimens identified in each genus



Fig. 2. Holotype – *Epipactis bucegensis*

Of the 602 specimens, 35 are lacking author identification. Additionally, several specimens were found to have been recorded under incorrect taxonomic names, including:

- “conopea” instead of *conopsea* (11 occurrences)
- “coriophorus” instead of *coriophora* (1 occurrence)
- “globosus” instead of *globosa* (2 occurrences)
- “latifolius” instead of *latifolia* (8 occurrences)
- “sambucinus” instead of *sambucina* (5 occurrences)
- “sessilifolis” instead of *sessilifolia* (1 occurrence)
- “signifier” instead of *signifera* (3 occurrences)

The three most recurrent species in the collection are *Gymnadenia conopsea* (L.) R.Br. with 53 specimens, *Goodyera repens* (L.) R.Br. with 43 specimens and *Anacamptis coriophora* (L.) R.M.Bateman, Pridgeon & M.W.Chase with 37 specimens. The least common species, having been identified only once, are: *Dactylorhiza maculata* subsp. *fuchsii* (Druce) Hyl, *Dactylorhiza maculata* subsp. *saccifera* (Brongn.) Diklic, *Anacamptis palustris* (Jacq.) R.M.Bateman, Pridgeon & M.W.Chase subsp. *palustris*, *Anacamptis papilionacea* (L.) R.M.Bateman, Pridgeon & M.W.Chase, *Cypripedium calceolus* L., *Epipactis leptochila* (Godfery) Godfery subsp. *leptochila*, *Gymnadenia odoratissima* (L.) Rich., *Orchis purpurea* Huds. subsp. *purpurea*, *Orchis militaris* L. subsp. *militaris*, *Ophrys sphegodes* Mill., *Ophrys holosericea* (Burm.f.) Greuter subsp. *holosericea* and *Himantoglossum calcaratum* subsp. *rumelicum* (H.Baumann & R.Lorenz) Niketić.

We have also identified 25 hybrid specimens, all part of the collection of Nora Anghelescu, which can be studied in Appendix 1.

The collection's specimens were sourced from various countries, with the following distribution: 98.5% from Romania, 0.66% specimens from Hungary, 0.49% from the United Kingdom, 0.16% from Moldova, and 0.16% from Italy. The orchids were collected from all over Romania, distributed in all of the regions, as follows: 34.73% from Muntenia, 17.03% from Transylvania, 9.61% from Oltenia, 5.9% from Moldova, 5.56% from Crişana, 4.04% specimens from Banat, 3.7% from Maramureş, 2.69% from Dobrogea, and 0.84% from Bucovina. The exemplars collected from regions outside of Romania are from Basarabia (Moldova), East Midlands (UK), South West England (UK) and Campania (Italy).

In many cases, the information on the labels was insufficient, therefore many specimens don't have a precise location in Romania. The region was not identified in 98 cases, whereas the county is missing from 105 sheets. The county with the most specimens in Romania is Prahova (110), with almost 3 times more than the second place (Buzău - 36 specimens). We have also determined 7 counties with names no longer in use:

- Vlaşca: 5 specimens (currently Giurgiu and Teleorman)
- Turda: 3 specimens (currently Alba)
- Năsăud: 3 specimens (currently Bistriţa-Năsăud)
- Trei Scaune: 2 specimens (currently Sălaj)
- Târnava Mică: 2 specimens (currently Sibiu)
- Severin: 1 specimen (currently Mehedinţi)
- Făgăraş: 1 specimen (currently Sibiu and Braşov)

The locality was not written on every sheet label, therefore most of them were left empty unless there was sufficient data to be able to approximate the localities where the plant specimens were collected. The localities were approximated for the specimens

from the sheets with the following inventory numbers: BUC182612 - Greci; BUC263891 - Baia Mare; BUC344368 - Sinaia; BUC182548 & BUC182549 - Brănești; BUC310714, BUC310715, BUC310716, BUC312889, BUC310720, BUC312883, BUC312884, BUC312887, BUC312888 - Săcele; BUC315861, BUC315862 - Scropoasa; BUC180086 - Cluj; BUC176834 - Sasca Montană / Șopotu Nou; BUC182628 - Techirghiol; BUC316141 - Găiseni; BUC375359, BUC410849 - Pietroșița; BUC182639 - Mihai Bravu; BUC180052 - Bârnova; BUC410765, BUC410840, BUC410846 - Brezoi; BUC410775, BUC410790, BUC410791, BUC410803, BUC410807, BUC410813, BUC410825, BUC410826 - Scropoasa; BUC410823 - Runcu.

The temporal distribution was also analysed (Fig. 3 & Fig. 4). The peak period for orchid collection was June, accounting for 186 specimens, while the decade with the most collections (156 sheets) is 1951-1960. Based on those specimens with legible labels on which the year of collection was present, the oldest herbarium sheets date back to 1901 - *Platanthera bifolia* (L.) Rich, while the most recent ones are from 2023 - *Anacamptis* × *menosii* (Chr. Bernard et G. Fabre) H. Kretzschmar, Eccarius et H. Dietr.; × *Dactylodenia sinaiensis* N. Kigyossy, N. Anghelescu, L. Balogh et Mih. Balogh; × *Pseudadenia schweinfurthii* (Hegelm. Ex A. Kern.) P. F. Hunt (Fig. 5).

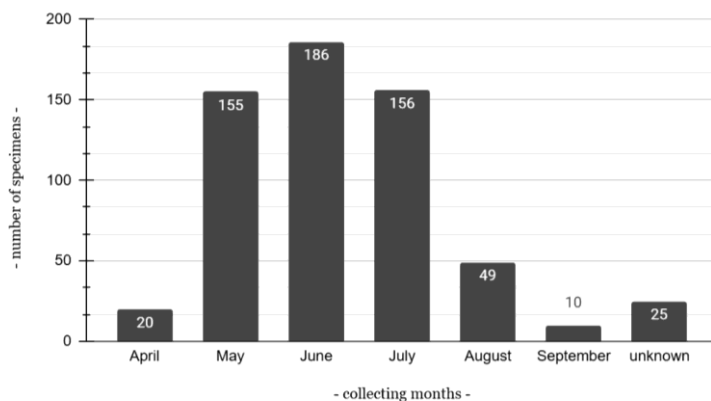


Fig. 3. Number of specimens collected each month over a period of 122 years

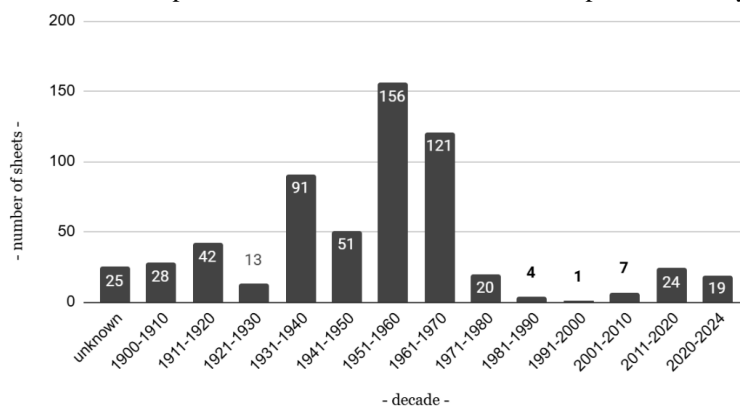


Fig. 4. Number of sheets registered every decade

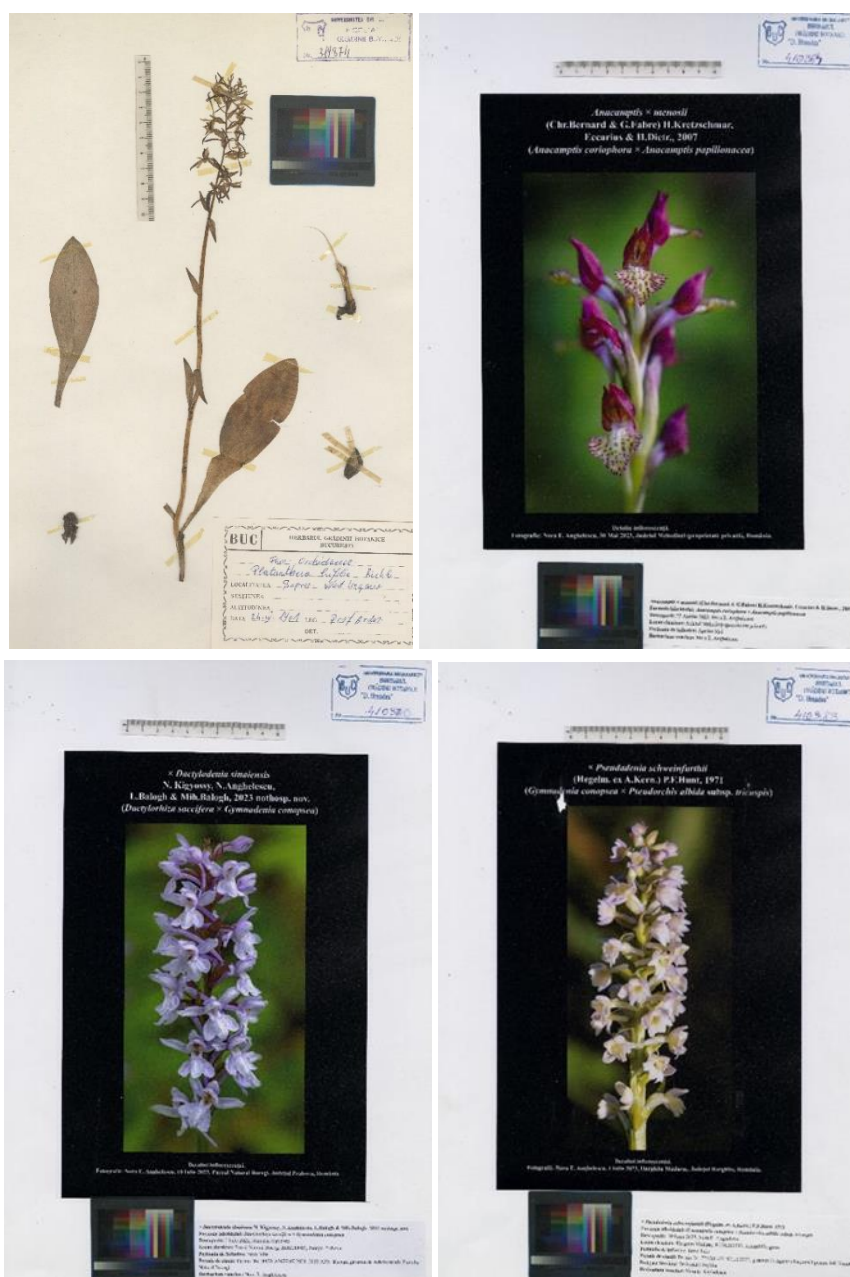


Fig. 5. The oldest and most recent herbarium sheets (top left – *Platanthera bifolia*, top right – *Anacamptis* × *menosii*, bottom left – × *Dactyloдения sinaiensis*, bottom right – × *Pseudadenia schweinfurthii*)

The five most frequent collectors, covering 41.52% of all the specimens, are P. Enculescu (114 occurrences), A. Paucă (59 occurrences), Nora Anghelescu (29 occurrences), Al. Borza (28 occurrences), M. Ruemmele (20 occurrences). Other notable collectors are I. Cristurean, D. Rădulescu, I. Morariu, G. Negrean, M. Neacșu, I.T. Tarnavski. The complete collectors list can be studied in Appendix 3.

Botanical research often involves collaboration, as seen in the joint efforts of various scholars. Negrean frequently collaborated with other researchers, such as A. Brădeanu. Cristurean and Tr. Ștefureac (16 occurrences) both appear frequently, often working together, especially on collections involving A. Popescu and L. Lungu. Their work demonstrates the interconnectedness of researchers in advancing botanical science. L. Lungu also stands out for his work with M. Ruemmele and other contributors, indicating a robust network of scholarly exchange.

A significant portion of the contributions -103 entries- are labeled as “unknown”, reflecting either unattributed work or contributions that were not clearly recorded. Additionally, 10 occurrences were listed as “illegible,” meaning the names could not be deciphered from the original records. These entries point to the challenges of maintaining accurate historical records in collaborative scientific fields.

During the review of the collection, certain identification errors were corrected. These errors were corrected following a taxonomic review of BUC 319953 and BUC 182668 sheets by A. Paucă, with specimen BUC 373521 revised by I. Sârbu, and specimen BUC 182668 corrected by M. Urziceanu and P. Comănescu.

In the BUC Herbarium collection, 109 out of 602 labels (19%) include references to Exsiccata and Herbaria. There are 14 Herbaria or Exsiccata, out of which the most prominent are Agrogeology Department Herbarium, Romanian Institute of Geology (46 entries), Flora Romaniae Exsiccata a Museo Botanico Universitatis Clusienensis Edită Cluj (16 entries) and Herbarium G. Negrean (15 entries). The entire list can be found in Appendix 4.

We have also determined the conservation status of the orchid specimens, which can be examined in greater depth in Appendix 5. Among the identified taxa, 42 are listed in the red lists, provided by Oltean et al. (1994), Boșcaiu et al. (1994), and Dihoru & Dihoru (1993-1994), and 3 taxa are included in the Red Book (Dihor & Negrean, 2009).

From the taxa listed in the red lists, the majority are considered rare, although we have also identified species classified as vulnerable and endangered. According to Boșcaiu et al. (1994), 1 taxon is vulnerable, while 6 are endangered. Based on Dihoru & Dihoru (1993-1994), 4 species are classified as vulnerable, and 4 as endangered. Additionally, 3 specimens appear in the Red Book, with specific classifications: 1 as lower risk (*Anacamptis papilionacea*), 1 as critically endangered (*Ophrys sphegodes*), and 1 as endangered (*Orchis simia* Lam.).

According to the IUCN Red List, some species in our collection have global (11 occurrences) and European (34 occurrences) conservation classifications, with varying conservation statuses. At the European level, 2 species are classified as near threatened: *Anacamptis morio* (L.) R.M.Bateman, Pridgeon & M.W.Chase and *Cypripedium calceolus*.

Under the EU Habitats Directive 2 species were classified as being of community interest: *Cypripedium calceolus* and *Himantoglossum calcaratum* subsp. *rumelicum* (Fig. 6).

13 taxa have no conservation status in the mentioned bibliographic sources, as they are recently discovered taxa.

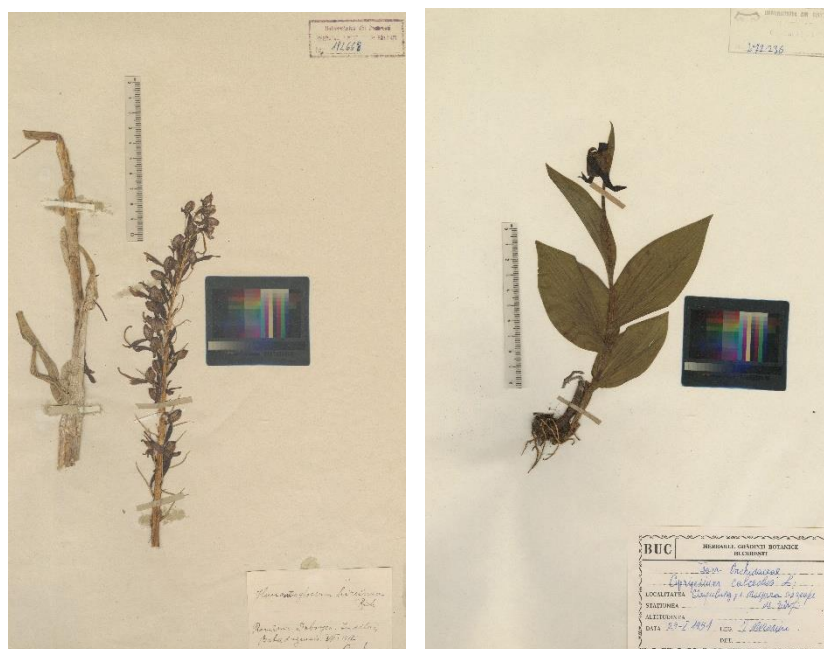


Fig. 6. The specimens of community interest (left – *Himantoglossum calcaratum* subsp. *rumelicum*; right – *Cypripedium calceolus*)

Conclusions

The orchid collection, comprising 602 specimens safely preserved in the BUC Herbarium, is an invaluable resource for Romania’s biodiversity and taxonomy. With 593 specimens collected locally over more than a century, this collection highlights the country’s rich botanical heritage. The digitization process, significantly supported by student volunteers from the Faculty of Biology, University of Bucharest, has enhanced the accessibility and preservation of these specimens. We hope this article contributes to furthering the conservation and appreciation of our herbarium’s legacy.

Acknowledgements. This work was made possible under the guidance of Professor Paulina Anastasiu, director of the Botanic Garden “D. Brândză”, University of Bucharest. We also thank biologist technician Monica Coțeanu from BUC Herbarium for supervising the scanning of the herbarium sheets.

Author Contributions. A.L.B. and B.I.A. (volunteer students) entered data into the database, scanned the sheets, and drafted the first version of the article, **contributing equally**. P.C.C. guided the digitization process and provided resources. M.U. coordinated the students' work, conceptualized the study, structured the article. Both P.C.C. and M.U. reviewed and validated the database and final manuscript.

References

- Besnard, G., Gaudeul, M., Lavergne, S., Muller, S., Rouhan, G., Sukhorukov, A.P., Vanderpoorten, A. & Jabbour, F. (2018). Herbarium-based science in the twenty-first century. *Botany Letters*, 165(3-4), 323-327. <https://doi.org/10.1080/23818107.2018.1482783>
- Boşcaiu, N., Coldea, G. & Horeanu, C. (1994). Lista Roşie a plantelor vasculare dispărute, periclitare, vulnerabile și rare din flora României. *Ocot. nat. med. înconj*, 38(1), 45-56.
- Camene-Comănescu, P., Conțeanu, M., & Nagodă, E. (2020). Threatened Vascular Plants from Buc Herbarium (I). *Acta Horti Bot. Bucurest.*, 46, 55–105.
- Cristofolini, G. (2024). Origin and evolution of herbaria in the sixteenth century. *Rendiconti Lincei. Scienze Fisiche e Naturali*, 35(1), 63-75. <https://doi.org/10.1007/s12210-024-01232-1>
- Botanic Garden “D. Brandza” (n.d.). *Herbarium BUC*. University of Bucharest. Retrieved October 27, 2024, from <https://gradina-botanica.unibuc.ro/herbarul-buc/>
- De Angelli, N., & Anghelescu, D. (2020). *Orchids of Romania*. Snagov: Publishing House.
- De Smedt, S., Bogaerts, A., De Meeter, N., Dillen, M., Engledow, H., Van Wambeke, P., Leliaert, F. & Groom, Q. (2024). Ten lessons learned from the mass digitisation of a herbarium collection. *PhytoKeys*, 244, 23–37. <https://doi.org/10.3897/phytokeys.244.120112>
- Dihoru, G., & Dihoru, A. (1994). Plante rare, periclitare și endemice în Flora României-Lista roșie. *Acta Bot. Horti Bucurest.*, 173-197.
- Dihoru, G. & Negrean, G. (2009). *Cartea roșie a plantelor vasculare din România*. București: Edit. Academiei Române.
- Funk, V. A. (2003). 100 Uses for an Herbarium: well at least 72. *American Society of Plant Taxonomists Newsletter*.
- Gaskett, A. C. & Gallagher, R. V. (2018). Orchid diversity: Spatial and climatic patterns from herbarium records. *Ecology and Evolution*, 8(22), 11235-11245. <https://doi.org/10.1002/ece3.4598>
- Harris, K. & Marsico, T. (2017). Digitizing Specimens in a Small Herbarium: A Viable Workflow for Collections Working with Limited Resources. *Applications in Plant Sciences*, 5(4), 1600125. <https://doi.org/10.3732/apps.1600125>
- Harvard University Herbaria (n.d.). *Oakes Ames Orchid Herbarium (AMES)*. Retrieved October 27, 2024, from <https://huh.harvard.edu/pages/oakes-ames-orchid-herbarium-ames>
- Index Herbariorum—The William & Lynda Steere Herbarium. (n.d.). Retrieved October 23, 2024, from <https://sweetgum.nybg.org/science/ih/>
- Irimia, I. (2012). Revision of the Orchidaceae family from the Herbarium of “Alexandru Ioan Cuza” University of Iași (2nd Note). *Analele Științifice ale Universității “Al. I. Cuza” din Iași*, 58, 81–90.
- IUCN Red List of Threatened Species. (n.d.). Retrieved October 21, 2024, from <https://www.iucnredlist.org/>
- James, S. A., Soltis, P. S., Belbin, L., Chapman, A. D., Nelson, G., Paul, D. L., & Collins, M. (2018). Herbarium data: Global biodiversity and societal botanical

- needs for novel research. *Applications in plant sciences*, 6(2), e1024. doi:10.1002/aps3.1024
- Mihăilescu, S., Anastasiu, P., & Popescu, A. (2015). *Ghidul de Monitorizare a Speciilor de Plante de Interes Comunitar din România*. Constanța: Edit. Dobrogea.
- Muséum National d'Histoire Naturelle. (n.d.). *Orchid collection*. Retrieved October 27, 2024, from <https://www.mnhn.fr/en/orchid-collection>
- New York Botanical Garden. (n.d.). *Collections – The William & Lynda Steere Herbarium*. Retrieved October 27, 2024, from <https://sweetgum.nybg.org/science/collections/>
- Nualart, N., Ibáñez, N., Soriano, I., & López-Pujol, J. (2017). a. Assessing the Relevance of Herbarium Collections as Tools for Conservation Biology. *The Botanical Review*, 83, 303–325. <https://doi.org/10.1007/s12229-017-9188-z>
- Oltean, M., Negrean, G., Popescu, A., Roman, N., Dihoru, G., Sanda, V. & Mihăilescu, S. (1994). Lista Roșie a plantelor superioare din România. *Inst. de biologie, studii, sinteze, documentații de ecologie, București*, 1,1-52.
- Pantu, Z. C. (1915). *Orchidaceele din România*. Librăriile Socec & Company.
- Pleșca, B.I., Pleșca, I.M., Ivan, R.C., & Dincă, L.C. (2021). Contributions to the Knowledge of Orchids from Romania. *Analele Universitatii din Craiova. Seria Biologie, Horticultura, Tehnologia Prelucrării Produselor Agricole, Ingineria Mediului*, 26, 309–314. <https://doi.org/10.52846/bhfe.26.2021.44>
- POWO (2024). Plants of the World Online. Facilitated by the Royal Botanic Gardens, Kew. Published on the Internet; <https://powo.science.kew.org/> Retrieved 27 October 2024.
- Royal Botanic Gardens, Kew | Kew. (n.d.). Retrieved October 23, 2024, from <https://www.kew.org/>
- Urziceanu, M., Anastasiu, P. & Crăciun, I. (2017). Brown Algae Collection of the Herbarium of the Botanic Garden “D. Brandza”, University of Bucharest. *Acta Horti Bot. Bucurest.*, 44, 111–146.
- Urziceanu, M., Nagodă, E., Iordache, C., Crăciun, I. & Anastasiu, P. (2018). The Red Algae Collection of the Botanic Garden “D. Brandza” Herbarium, University of Bucharest. *Acta Horti Bot. Bucurest.*, 45, 65–195.
- Yadav, S.S. (2020). Herbarium: historical account, significance, preparation techniques and management issues. *Plant Archives*, 20, 2915–2926.

Appendix 1 List of the orchid's specimens from BUC Herbarium: Valid name / Taxon name / Country / Region / County / Locality / Toponym / Geographical coordinates/ Altitude / Ecology / Day / Month / Year / Legit / Determinavit / Exsiccata / Herbaria / BUC Inventory number / HOLOTYPE / Hybrid Formula

Anacamptis coriophora (L.) R.M.Bateman, Pridgeon & M.W.Chase / Orchis / coriophora / L. / coriophora / Romania / Muntenia / Buzău / Cocârceni / meadow, Valea cu șopron / 9 / June / 2014 / Anastasiu P. / Anastasiu P. / BUC 401677

Anacamptis coriophora (L.) R.M.Bateman, Pridgeon & M.W.Chase / Orchis / coriophora / L. / fragrans (Pollini) K.Richt. / Romania / Oltenia / Vâlcea / Măldărești / 10 / June / 2005 / Negrean G. / Negrean G. / Herbarium G. Negrean / BUC 400206

Anacamptis coriophora (L.) R.M.Bateman, Pridgeon & M.W.Chase / Orchis / coriophora / L. / Italy / Campania / Napoli / Pompeii / May / 1924 / Enculescu P. / Enculescu P. / Agrogeology Department Herbarium, Romanian Institute of Geology / BUC 182635

Anacamptis coriophora (L.) R.M.Bateman, Pridgeon & M.W.Chase / Orchis / coriophora / L. / Romania / 30 / May / 1936 / unknown / unknown / BUC 182543

Anacamptis coriophora (L.) R.M.Bateman, Pridgeon & M.W.Chase / Orchis / coriophora / L. / Romania / Banat / Caraș-Severin / Sasca Montană/Șopotu Nou / Cheile Nerei-Beușnița / mesophilic grasslands / 25 / May / 1967 / illegible / illegible / Herbarium of the Natural Monuments Subcommission, Academy of the Socialist Republic of Romania, Scientific Research Base Timișoara / BUC 176834

Anacamptis coriophora (L.) R.M.Bateman, Pridgeon & M.W.Chase / Orchis / coriophora / L. / Romania / Maramureș / Maramureș / Fața Silvestrului / 30 / May / 1936 / Enculescu P. / Paucă A. / BUC 182540

Anacamptis coriophora (L.) R.M.Bateman, Pridgeon & M.W.Chase / Orchis / coriophora / L. / Romania / Maramureș / Maramureș / Fața Silvestrului / 30 / May / 1936 / Enculescu P. / Paucă A. / BUC 182541

Anacamptis coriophora (L.) R.M.Bateman, Pridgeon & M.W.Chase / Orchis / coriophora / L. / Romania / Moldova / Vaslui / 4 / June / 1936 / Petrescu C. et Răvărui M. / Petrescu C. et Răvărui M. / BUC 285198

Anacamptis coriophora (L.) R.M.Bateman, Pridgeon & M.W.Chase / Orchis / coriophora / L. / Romania / Moldova / Vaslui / 4 / June / 1936 / unknown / unknown / BUC 285199

Anacamptis coriophora (L.) R.M.Bateman, Pridgeon & M.W.Chase / Orchis / coriophora / L. / Romania / Moldova / Vaslui / Bărnova / 300 m / in foenatis prope pagum Bărnova / 4 / June / 1936 / Petrescu C. et Răvărui M. / Petrescu C. et Răvărui M. / Flora Romaniae Exsiccata a Museo Botanico Universitatis Clusienensis Edită (Cluj) / BUC 180050

Anacamptis coriophora (L.) R.M.Bateman, Pridgeon & M.W.Chase / Orchis / coriophora / L. / Romania / Muntenia / Buzău / Bălănești / forest / 31 / May / 1999 / Anastasiu P. / Anastasiu P. / BUC 410764

Anacamptis coriophora (L.) R.M.Bateman, Pridgeon & M.W.Chase / Orchis / coriophora / L. / Romania / Muntenia / Buzău / Gura Milii / hayfield / 16 / June / 1934 / Enculescu P. / Enculescu P. / BUC 182542

Anacamptis coriophora (L.) R.M.Bateman, Pridgeon & M.W.Chase / Orchis / coriophora / L. / Romania / Muntenia / Prahova / in the forest south-east of the clearing, podzol soil / 20 / May / 1913 / Enculescu P. / Enculescu P. / Agrogeology Department Herbarium, Romanian Institute of Geology / BUC 182633

Anacamptis coriophora (L.) R.M.Bateman, Pridgeon & M.W.Chase / Orchis / coriophora / L. / Romania / Muntenia / Prahova / Munții Ciucaș, Valea Berii / 28 / June / 1956 / Salmen H. / Salmen H. / BUC 315637

Anacamptis coriophora (L.) R.M.Bateman, Pridgeon & M.W.Chase / Orchis / coriophora / L. / Romania / Muntenia / Prahova / Sinaia / 14 / June / 1960 / M. / Popesc Popescu u M. / BUC 285197

Anacamptis coriophora (L.) R.M.Bateman, Pridgeon & M.W.Chase / Orchis / coriophora / L. / Romania / Muntenia / Prahova / Sinaia / 25 / June / 1959 / unknown / unknown / BUC 319778

Anacamptis coriophora (L.) R.M.Bateman, Pridgeon & M.W.Chase / Orchis / coriophora / L. / Romania / Muntenia / Prahova / Sinaia / Poiana Cumpătul / 29 / June / 1956 / Rădulescu D. / Rădulescu D. / BUC 273143

Anacamptis coriophora (L.) R.M.Bateman, Pridgeon & M.W.Chase / Orchis / coriophora / L. / Romania / Oltenia / Gorj / Tismana / hayfield / 23 / May / 1953 / Paucă A. / Paucă A. / BUC 268007

Anacamptis coriophora (L.) R.M.Bateman, Pridgeon & M.W.Chase / Orchis / coriophora / L. / Romania / Oltenia / Gorj / Tismana / hayfield / 23 / May / 1953 / Paucă A. / Paucă A. / BUC 268114

- Anacamptis coriophora (L.) R.M.Bateman, Pridgeon & M.W.Chase** / Orchis / coriophora / L. / Romania / Oltenia / Gorj / Tismana / hayfield / 23 / May / 1953 / Paucă A. / Paucă A. / BUC 268115
- Anacamptis coriophora (L.) R.M.Bateman, Pridgeon & M.W.Chase** / Orchis / coriophora / L. / Romania / Oltenia / Gorj / Tismana / hayfield / 23 / May / 1953 / Paucă A. / Paucă A. / BUC 268116
- Anacamptis coriophora (L.) R.M.Bateman, Pridgeon & M.W.Chase** / Orchis / coriophora / L. / Romania / Oltenia / Gorj / Tismana / hayfield / 23 / May / 1953 / Paucă A. / Paucă A. / BUC 268117
- Anacamptis coriophora (L.) R.M.Bateman, Pridgeon & M.W.Chase** / Orchis / coriophora / L. / Romania / Oltenia / Gorj / Tismana / hayfield / 23 / May / 1953 / Paucă A. / Paucă A. / BUC 268118
- Anacamptis coriophora (L.) R.M.Bateman, Pridgeon & M.W.Chase** / Orchis / coriophora / L. / Romania / Oltenia / Gorj / Tismana / hayfield / 23 / May / 1953 / Paucă A. / Paucă A. / BUC 268119
- Anacamptis coriophora (L.) R.M.Bateman, Pridgeon & M.W.Chase** / Orchis / coriophora / L. / Romania / Oltenia / Gorj / Tismana / hayfield / 25 / May / 1953 / Paucă A. / Paucă A. / BUC 268120
- Anacamptis coriophora (L.) R.M.Bateman, Pridgeon & M.W.Chase** / Orchis / coriophora / L. / Romania / Oltenia / Gorj / Tismana / hayfield / 25 / May / 1953 / Paucă A. / Paucă A. / BUC 268122
- Anacamptis coriophora (L.) R.M.Bateman, Pridgeon & M.W.Chase** / Orchis / coriophora / L. / Romania / Oltenia / Gorj / Tismana / hayfield / 25 / May / 1953 / Paucă A. / Paucă A. / BUC 268123
- Anacamptis coriophora (L.) R.M.Bateman, Pridgeon & M.W.Chase** / Orchis / coriophora / L. / Romania / Oltenia / Gorj / Tismana / hayfield / 25 / May / 1953 / Paucă A. / Paucă A. / BUC 268124
- Anacamptis coriophora (L.) R.M.Bateman, Pridgeon & M.W.Chase** / Orchis / coriophora / L. / Romania / Oltenia / Gorj / Tismana / hayfield / 25 / May / 1953 / Paucă A. / Paucă A. / BUC 268125
- Anacamptis coriophora (L.) R.M.Bateman, Pridgeon & M.W.Chase** / Orchis / coriophora / L. / Romania / Oltenia / Mehedinți / Baia de Aramă, Apa Neagră / 25 / May / 1953 / Paucă A. / Paucă A. / BUC 268008
- Anacamptis coriophora (L.) R.M.Bateman, Pridgeon & M.W.Chase** / Orchis / coriophora / L. / Romania / Oltenia / Mehedinți / Baia de Aramă, Apa Neagră / 25 / May / 1953 / Paucă A. / Paucă A. / BUC 268009
- Anacamptis coriophora (L.) R.M.Bateman, Pridgeon & M.W.Chase** / Orchis / coriophora / L. / Romania / Oltenia / Mehedinți / Comănești / in the forest east of Comănești, podzol soil / 30 / May / 1913 / Enculescu P. / Enculescu P. / Agrogeology Department Herbarium, Romanian Institute of Geology / BUC 182634
- Anacamptis coriophora (L.) R.M.Bateman, Pridgeon & M.W.Chase** / Orchis / coriophora / L. / Romania / Paucă A. / Paucă A. / BUC 268006
- Anacamptis coriophora (L.) R.M.Bateman, Pridgeon & M.W.Chase** / Orchis / coriophora / L. / Romania / Transilvania / Alba / Sebeș / Carpații Meridionali / 850 m / 19 / June / 1950 / Borza Al. / Borza Al. / BUC 249507
- Anacamptis coriophora (L.) R.M.Bateman, Pridgeon & M.W.Chase** / Orchis / coriophora / L. / Romania / Transilvania / Mureș / Șilea / Muntele Bokecs / 1060 m / in pratis cacuminis montis „Bokecs” / 1 / June / 1921 / Nyarady E. I. / Nyarady E. I. / Flora Romaniae Exsiccata a Museo Botanico Universitatis Clusienensis Edita (Cluj) / BUC 180051
- Anacamptis coriophora (L.) R.M.Bateman, Pridgeon & M.W.Chase** / Orchis / coriophora / L. / Romania / Crișana / Satu Mare / Carei / 27 / May / 1966 / unknown / Urziceanu M. & Comănescu P. / BUC 263479
- Anacamptis coriophora (L.) R.M.Bateman, Pridgeon & M.W.Chase** / Orchis / coriophorus / L. / Romania / Crișana / Sălaj / Șimleul Silvaniei / in shrubs and wet meadows / Groza U. / Groza U. / BUC 375938
- Anacamptis morio (L.) R.M.Bateman, Pridgeon & M.W.Chase** / Orchis / morio / L. / morio / Romania / Transilvania / Sălaj / Jebucu S / Dealul Riseg / 46°51'20,74"N / 23°06'22,09"E / 705 m / north-west slope, meadow / 6 / May / 2017 / Brădeanu A. et Negrean G / Brădeanu A. et Negrean G / Herbarium G. Negrean / BUC 409295
- Anacamptis morio (L.) R.M.Bateman, Pridgeon & M.W.Chase** / Orchis / morio / L. / Romania / Banat / Caraș-Severin / Anina / Margitaș farm / 20 / May / 1942 / Morariu I. / Morariu I. / BUC 209303
- Anacamptis morio (L.) R.M.Bateman, Pridgeon & M.W.Chase** / Orchis / morio / L. / Romania / Banat / Caraș-Severin / Mătnicu Mare / Poiana Săliște / 28 / April / 1970 / Ștefănuță P. / Ștefănuță P. / BUC 271268
- Anacamptis morio (L.) R.M.Bateman, Pridgeon & M.W.Chase** / Orchis / morio / L. / Romania / Banat / Caraș-Severin / Mătnicu Mare / Poiana Săliște / 28 / April / 1970 / Ștefănuță P. / Ștefănuță P. / BUC 271269
- Anacamptis morio (L.) R.M.Bateman, Pridgeon & M.W.Chase** / Orchis / morio / L. / Romania / Crișana / Bihor / Salonta / 7 / May / 1967 / unknown / unknown / BUC 263484

Anacamptis morio (L.) R.M.Bateman, Pridgeon & M.W.Chase / Orchis / morio / L. / Romania / Crișana / Bihor / Vadu Crișului / 400 m / pasture on a northern slope, pseudogleyed podzolic clay-illuvial soil / 15 / May / 1967 / Neacșu M. / Neacșu M. / BUC 260926

Anacamptis morio (L.) R.M.Bateman, Pridgeon & M.W.Chase / Orchis / morio / L. / Romania / Crișana / Bihor / Vadu Crișului / 400 m / pasture on a northern slope, pseudogleyed podzolic clay-illuvial soil / 15 / May / 1967 / Neacșu M. / Neacșu M. / BUC 410815

Anacamptis morio (L.) R.M.Bateman, Pridgeon & M.W.Chase / Orchis / morio / L. / Romania / Crișana / Sălaj / Șimleul Silvaniei / in wet meadows and hayfields / Groza U. / Groza U. / BUC 375939

Anacamptis morio (L.) R.M.Bateman, Pridgeon & M.W.Chase / Orchis / morio / L. / Romania / Dobrogea / Tulcea / Babadag / 24 / May / 1962 / Lungeanu I. / Lungeanu I. / BUC 374250

Anacamptis morio (L.) R.M.Bateman, Pridgeon & M.W.Chase / Orchis / morio / L. / Romania / Dobrogea / Tulcea / Babadag / 7 / May / 1962 / Diaconescu V. / Diaconescu V. / BUC 285193

Anacamptis morio (L.) R.M.Bateman, Pridgeon & M.W.Chase / Orchis / morio / L. / Romania / Dobrogea / Tulcea / Babadag / 7 / May / 1962 / Diaconescu V. / Diaconescu V. / BUC 285194

Anacamptis morio (L.) R.M.Bateman, Pridgeon & M.W.Chase / Orchis / morio / L. / Romania / Dobrogea / Tulcea / Babadag / 7 / May / 1962 / Diaconescu V. / Diaconescu V. / BUC 285195

Anacamptis morio (L.) R.M.Bateman, Pridgeon & M.W.Chase / Orchis / morio / L. / Romania / Dobrogea / Tulcea / Babadag / 7 / May / 1962 / Diaconescu V. / Diaconescu V. / BUC 285196

Anacamptis morio (L.) R.M.Bateman, Pridgeon & M.W.Chase / Orchis / morio / L. / Romania / Masivul Făgăraș / 1900 m / 29 / May / 1968 / Pușcariu Evd. Et Alexan M. / Pușcariu Evd. Et Alexan M. / BUC 180054

Anacamptis morio (L.) R.M.Bateman, Pridgeon & M.W.Chase / Orchis / morio / L. / Romania / Moldova / Iași / Bârnova / Pădurea Bârnova / 300 m / in graminosis / 13 / May / 1937 / Burduja C. et Răvăruf M. / Burduja C. et Răvăruf M. / Flora Romaniae Exsiccata a Museo Botanico Universitatis Clusienensis Edită (Cluj) / BUC 180052

Anacamptis morio (L.) R.M.Bateman, Pridgeon & M.W.Chase / Orchis / morio / L. / Romania / Muntenia / Argeș / Mătășaru / 1 / May / 1959 / unknown / unknown / BUC 314440

Anacamptis morio (L.) R.M.Bateman, Pridgeon & M.W.Chase / Orchis / morio / L. / Romania / Muntenia / Buzău / Gura Milii / 13 / May / 1935 / Enculescu P. / Paucă A. / BUC 182608

Anacamptis morio (L.) R.M.Bateman, Pridgeon & M.W.Chase / Orchis / morio / L. / Romania / Muntenia / Buzău / Gura Milii / 13 / May / 1935 / Enculescu P. / Paucă A. / BUC 182609

Anacamptis morio (L.) R.M.Bateman, Pridgeon & M.W.Chase / Orchis / morio / L. / Romania / Muntenia / Pietroșița / Dâmbovița / 1700 m / wetland / 24 / June / 1987 / Buculei P. / Buculei P. / BUC 375359

Anacamptis morio (L.) R.M.Bateman, Pridgeon & M.W.Chase / Orchis / morio / L. / Romania / Muntenia / Prahova / 550m / hayfield / 25 / April / 1980 / Ourică D. C. / Ourică D. C. / BUC 267289

Anacamptis morio (L.) R.M.Bateman, Pridgeon & M.W.Chase / Orchis / morio / L. / Romania / Muntenia / Prahova / Câmpina / podzol soil / April / 1907 / Enculescu P. / Enculescu P. / Agrogeology Department Herbarium, Romanian Institute of Geology / BUC 182640

Anacamptis morio (L.) R.M.Bateman, Pridgeon & M.W.Chase / Orchis / morio / L. / Romania / Muntenia / Prahova / Săcele / Muntele Girbova / 9 / June / 1967 / Lungu L. et Ruemmele M. / Lungu L. et Ruemmele M. / BUC 312887

Anacamptis morio (L.) R.M.Bateman, Pridgeon & M.W.Chase / Orchis / morio / L. / Romania / Muntenia / Prahova / Săcele / Muntele Girbova / 9 / June / 1967 / Lungu L. et Ruemmele M. / Lungu L. et Ruemmele M. / BUC 312888

Anacamptis morio (L.) R.M.Bateman, Pridgeon & M.W.Chase / Orchis / morio / L. / Romania / Muntenia / Prahova / Sinaia / Poiana Șarînga / 14 / June / 1957 / Lungu L. / Lungu L. / BUC 171305

Anacamptis morio (L.) R.M.Bateman, Pridgeon & M.W.Chase / Orchis / morio / L. / Romania / Muntenia / Vlașca / Mihai Bravu / Pădurea Dadilov / east of the pond, forest soil / 19 / April / 1913 / Enculescu P. / Enculescu P. / Agrogeology Department Herbarium, Romanian Institute of Geology / BUC 182639

Anacamptis morio (L.) R.M.Bateman, Pridgeon & M.W.Chase / Orchis / morio / L. / Romania / Oltenia / Gorj / Ponoare / 600 m / in pratis / 11 / May / 1962 / Buia Al. et Cîrțu D. / Buia Al. et Cîrțu D. / „Flora Olteniae Exsiccata” Hortus Botanicus Institutii Agronomici „T. Vladimirescu” Craiova-Republica Socialistă România / BUC 176656

Anacamptis morio (L.) R.M.Bateman, Pridgeon & M.W.Chase / Orchis / morio / L. / Romania / Oltenia / Gorj / Ponoare / 600m / in pratis / 11 / May / 1962 / Buia Al. et Cîrțu D. / Buia Al. et Cîrțu D. / „Flora Olteniae Exsiccata” Hortus Botanicus Institutii Agronomici „T. Vladimirescu” Craiova-Republica Socialistă România / BUC 273138

- Anacamptis morio (L.) R.M.Bateman, Pridgeon & M.W.Chase** / Orchis / morio / L. / Romania / Transilvania / Năsăud / Mureșenii Bârgăului / Muntele Căсарu / 700 m / in pascuis subalpinis „Fânețele satului”, solo argill / 6 / May / 1937 / Forstner S. / Forstner S. / Flora Romaniae Exsiccata a Museo Botanico Universitatis Clusienensis Edita (Cluj) / BUC 180053
- Anacamptis morio (L.) R.M.Bateman, Pridgeon & M.W.Chase** / Orchis / morio / L. / Romania / Transilvania / Năsăud / Mureșenii Bârgăului / Muntele Căсарu / 700 m / in pascuis subalpinis „Fânețele satului”, solo argill / 6 / May / 1937 / Forstner S. / Forstner S. / Flora Romaniae Exsiccata a Museo Botanico Universitatis Clusienensis Edita (Cluj) / BUC 410814
- Anacamptis morio (L.) R.M.Bateman, Pridgeon & M.W.Chase** / Orchis / morio / Romania / Muntenia / Argeș / Cerbu / 5 / May / 1955 / unknown / unknown / BUC 314438
- Anacamptis morio (L.) R.M.Bateman, Pridgeon & M.W.Chase** / Orchis / morio / Romania / Muntenia / Argeș / Cerbu / 5 / May / 1955 / unknown / unknown / BUC 314439
- Anacamptis morio (L.) R.M.Bateman, Pridgeon & M.W.Chase** / Orchis / morio / Romania / unknown / unknown / BUC 284706
- Anacamptis palustris (Jacq.) R.M.Bateman, Pridgeon & M.W.Chase** / Orchis / laxiflora / palustris / Romania / Dobrogea / Constanța / Mamaia / humid sands / Făgăraș M. / Făgăraș M. / "Ovidius" University Constanța Herbarium / BUC 362853
- Anacamptis palustris (Jacq.) R.M.Bateman, Pridgeon & M.W.Chase** / Orchis / palustris / Jacq. / Romania / 4 / May / 1931 / unknown / unknown / BUC 315506
- Anacamptis palustris (Jacq.) R.M.Bateman, Pridgeon & M.W.Chase** / Orchis / palustris / Jacq. / Romania / Hobița / hayfield / 29 / May / 1953 / Paucă A. / Paucă A. / BUC 268854
- Anacamptis palustris (Jacq.) R.M.Bateman, Pridgeon & M.W.Chase** / Orchis / palustris / Jacq. / Romania / Maramureș / Maramureș / Scărișoara / swamp / 14 / May / 1966 / unknown / unknown / BUC 263480
- Anacamptis palustris (Jacq.) R.M.Bateman, Pridgeon & M.W.Chase** / Orchis / palustris / Jacq. / Romania / Maramureș / Maramureș / Scărișoara / swamp / 14 / May / 1966 / unknown / unknown / BUC 263481
- Anacamptis palustris (Jacq.) R.M.Bateman, Pridgeon & M.W.Chase** / Orchis / palustris / Jacq. / Romania / Muntenia / Buzău / Pădurea Frasinul / 9 / June / 1946 / Morariu I. / Morariu I. / BUC 344713
- Anacamptis palustris (Jacq.) R.M.Bateman, Pridgeon & M.W.Chase** / Orchis / palustris / Jacq. / Romania / Muntenia / Pădurea Frasinul / 25 / June / 1953 / illegible / illegible / BUC 268855
- Anacamptis palustris (Jacq.) R.M.Bateman, Pridgeon & M.W.Chase** / Orchis / palustris / Jacq. / Romania / Muntenia / Vlașca / Copăceni / Fluviul Argeș / 80m / in pratis humidis ad ripam fluvii Argeș, prope pagum Copăceni / 28 / May / 1920 / Grințescu G. P. / Grințescu G. P. / Flora Romaniae Exsiccata a Museo Botanico Universitatis Clusienensis Edita (Cluj) / BUC 180056
- Anacamptis palustris (Jacq.) R.M.Bateman, Pridgeon & M.W.Chase** / Orchis / palustris / Jacq. / Romania / Oltenia / Gorj / Țințăreni / Lunca Gilortului / 155m / Gilort River marsh / 4 / June / 1964 / Zaharia C. I. / Zaharia C. I. / BUC 175879
- Anacamptis palustris (Jacq.) R.M.Bateman, Pridgeon & M.W.Chase** / Orchis / palustris / Jacq. / Romania / Oltenia / Olt / Baldovinești / 110 m / in paludosis locis prope pagum Baldovinești / 11 / July / 1963 / Păun M. / Păun M. / „Flora Olteniae Exsiccata” Hortus Botanicus Institutii Agronomici „T. Vladimirescu” Craiova-Republica Socialistă România / BUC 176657
- Anacamptis palustris (Jacq.) R.M.Bateman, Pridgeon & M.W.Chase** / Orchis / palustris / Jacq. / Romania / Oltenia / Olt / Baldovinești / 110 m / in paludosis locis prope pagum Baldovinești / 11 / July / 1963 / Păun M. / Păun M. / „Flora Olteniae Exsiccata” Hortus Botanicus Institutii Agronomici „T. Vladimirescu” Craiova-Republica Socialistă România / BUC 273139
- Anacamptis palustris (Jacq.) R.M.Bateman, Pridgeon & M.W.Chase** / Orchis / palustris / Jacq. / Romania / Oltenia / Olt / Baldovinești / 110 m / in paludosis locis prope pagum Baldovinești / 11 / July / 1963 / Păun M. / Păun M. / „Flora Olteniae Exsiccata” Hortus Botanicus Institutii Agronomici „T. Vladimirescu” Craiova-Republica Socialistă România / BUC 273140
- Anacamptis palustris (Jacq.) R.M.Bateman, Pridgeon & M.W.Chase** / Orchis / palustris / Jacq. / Romania / Oltenia / Olt / Baldovinești / 110 m / in paludosis locis prope pagum Baldovinești / 11 / July / 1963 / Păun M. / Păun M. / „Flora Olteniae Exsiccata” Hortus Botanicus Institutii Agronomici „T. Vladimirescu” Craiova-Republica Socialistă România / BUC 273141
- Anacamptis palustris (Jacq.) R.M.Bateman, Pridgeon & M.W.Chase** / Orchis / palustris / Scop. / Romania / Transilvania / Brașov / Săcele / Munții Gîrbova, Rențea / 1200m / meadow / 10 / June / 1967 / Lungu L. et Ruummele M. / Lungu L. et Ruummele M. / BUC 312889

Anacamptis palustris subsp. elegans (Heuff.) R.M.Bateman, Pridgeon & M.W.Chase / Orchis / elegans / Heuff. / Romania / Crișana / Bihor / Borod / 380m / Shrubs at the head of the valley on the northern slope, black soil of wet meadow / 18 / June / 1968 / Neacșu M. / Neacșu M. / BUC 260930

Anacamptis palustris subsp. elegans (Heuff.) R.M.Bateman, Pridgeon & M.W.Chase / Orchis / elegans / Heuff. / Romania / Muntenia / Vlașca / Dobrotești / Lunca Neajlovului / 50 m / in the hayfield near Neajlovului floodplain, south-east of Dobrotești / 28 / May / 1920 / Enculescu P. / Enculescu P. / Agrogeology Department Herbarium, Romanian Institute of Geology / BUC 182613

Anacamptis palustris subsp. elegans (Heuff.) R.M.Bateman, Pridgeon & M.W.Chase / Orchis / elegans / Heuff. / Romania / Muntenia / Vlașca / Dobrotești / Lunca Neajlovului / 50 m / in the hayfield near Neajlovului floodplain, south-east of Dobrotești / 28 / May / 1920 / Enculescu P. / Enculescu P. / Agrogeology Department Herbarium, Romanian Institute of Geology / BUC 182614

Anacamptis palustris subsp. elegans (Heuff.) R.M.Bateman, Pridgeon & M.W.Chase / Orchis / elegans / Heuff. / Romania / Transilvania / Alba / Sebeș / 10 / June / 1950 / Borza Al. / Borza Al. / BUC 249510

Anacamptis palustris subsp. elegans (Heuff.) R.M.Bateman, Pridgeon & M.W.Chase / Orchis / elegans / Romania / Oltenia / Mehedinți / Turnu Severin / Valea Cervenita / 5 / June / 1956 / unknown / unknown / BUC 263476

Anacamptis palustris subsp. elegans (Heuff.) R.M.Bateman, Pridgeon & M.W.Chase / Orchis / laxiflora / L. / Romania / wet hayfield, in the swamp / 25 / May / 1960 / Heltmann H. / Heltmann H. / Herbarium H. Heltmann / BUC 273527

Anacamptis palustris subsp. elegans (Heuff.) R.M.Bateman, Pridgeon & M.W.Chase / Orchis / laxiflora / Lam / elegans (Heuff.) Soó / Romania / Moldova / Iași / Pârlița, Grajduri / 180 m / in vico Pârlița prope pagum Grajduri / 10 / June / 1972 / Burduja C., Diaconescu F., Rugină R., Todorescu G., Toniuc A. et Coman A. / Burduja C., Diaconescu F., Rugină R., Todorescu G., Toniuc A. et Coman A. / Flora Moldaviae et Dobrogeae Exsiccata A Horto Botanica Universitatis „Al. I. Cuza” Iassiensis Editam / BUC 320234

Anacamptis palustris subsp. elegans (Heuff.) R.M.Bateman, Pridgeon & M.W.Chase / Orchis / laxiflora / Lam / elegans (Heuff.) Soó / Romania / Muntenia / Buzău / Bălănești / marshy meadow / 8 / June / 2014 / Anastasiu P. / Anastasiu P. / BUC 401679

Anacamptis palustris subsp. elegans (Heuff.) R.M.Bateman, Pridgeon & M.W.Chase / Orchis / laxiflora / Lam / elegans (Heuff.) Soó / Romania / wet hayfield, in the swamp / 25 / May / 1960 / Heltmann H. / Heltmann H. / Herbarium H. Heltmann / BUC 273528

Anacamptis palustris subsp. elegans (Heuff.) R.M.Bateman, Pridgeon & M.W.Chase / Orchis / palustris / Jacq. / elegans (Heuff.) / Romania / Transilvania / Cluj / Apahida / Valea Someșului / 305m / in pratis humidis vallis Someș, prope pagum Apahida / 2 / June / 1911 / unknown / unknown / Flora Romaniae Exsiccata a Museo Botanico Universitatis Clusienensis Edita (Cluj) / BUC 180055

Anacamptis palustris subsp. elegans (Heuff.) R.M.Bateman, Pridgeon & M.W.Chase / Orchis / palustris / Jacq. / elegans (Heuff.) / Romania / Transilvania / Cluj / Apahida / Valea Someșului / 305m / in pratis humidis vallis Someș, prope pagum Apahida / 2 / June / 1911 / unknown / unknown / Flora Romaniae Exsiccata a Museo Botanico Universitatis Clusienensis Edita (Cluj) / BUC 182669

Anacamptis palustris subsp. palustris / Orchis / palustris / Jacq. / Romania / Transilvania / Făgăraș / Perșani Băi, wet hayfield / 8 / June / 1966 / Ularu P. / Ularu P. / Pedagogical Institute Brașov Herbarium / BUC 171770

Anacamptis papilionacea (L.) R.M.Bateman, Pridgeon & M.W.Chase / Orchis / papilionacea / L. / Romania / Mehedinți / south of Pălătești, humid podzol soil / 31 / May / 1913 / Enculescu P. / Enculescu P. / Agrogeology Department Herbarium, Romanian Institute of Geology / BUC 182617

Anacamptis x menosii (Chr. Bernard et G. Fabre) H. Kretzschmar, Eccarius et H. Dietr. / Anacamptis / x menosii / (Chr. Bernard et G. Fabre) H. Kretzschmar, Eccarius et H. Dietr. / Romania / Mehedinți / Private property / 27 / April / 2023 / Nora E. Anghelescu / Nora E. Anghelescu / BUC410363 / Anacamptis coriophora x Anacamptis papilionacea

Anacamptis x menosii (Chr. Bernard et G. Fabre) H. Kretzschmar, Eccarius et H. Dietr. / Anacamptis / x menosii / (Chr. Bernard et G. Fabre) H. Kretzschmar, Eccarius et H. Dietr. / Romania / Mehedinți / Private property / 27 / April / 2023 / Nora E. Anghelescu / Nora E. Anghelescu / BUC 410364 / Anacamptis coriophora x Anacamptis papilionacea

Cephalanthera damasonium (Mill.) Druce / Cephalanthera / alba / (Cr.) Simk. / Romania / Muntenia / Ilfov / Periș / forest / 22 / May / 1905 / Enculescu P. / Enculescu P. / Agrogeology Department Herbarium, Romanian Institute of Geology / BUC 182644

Cephalanthera damasonium (Mill.) Druce / Cephalanthera / alba / (Cr.) Simk. / Romania / Transilvania / Târnava mică / Bazna / 400 m / in fagetis mixtis prope balneas Bazna, sol-humoso / 30 / July /

1940 / Borza Al. / Borza Al. / Flora Romaniae Exsiccata a Museo Botanico Universitatis Clusienensis Edita (Cluj) / BUC 181865

Cephalanthera damasonium (Mill.) Druce / Cephalanthera / alba / (Crantz) Simonk. / Romania / Dobrogea / Tulcea / Babadag / 23-26 / May / 1962 / Popescu A., Ionescu et Cristurean I. / Popescu A., Ionescu et Cristurean I. / BUC 410796

Cephalanthera damasonium (Mill.) Druce / Cephalanthera / alba / (Crantz) Simonk. / Romania / Dobrogea / Tulcea / Babadag / 23-26 / May / 1962 / Popescu A., Ionescu et Cristurean I. / Popescu A., Ionescu et Cristurean I. / BUC 410797

Cephalanthera damasonium (Mill.) Druce / Cephalanthera / alba / Romania / Oltenia / Dolj / Craiova / illegible / brown soil / 31 / May / 1956 / unknown / unknown / BUC 319948

Cephalanthera damasonium (Mill.) Druce / Cephalanthera / damasonium / (Mill.) Druce / Romania / Transilvania / Sălaj / sat Jebucu / Dealul Riseg / 46°51'86,66"N / 26°06'09"E / 721 m / poiei in Fagetum / 6 / May / 2018 / Negrean G. / Negrean G. / Herbarium G. Negrean / BUC 408811

Cephalanthera longifolia (L.) Fritsch / Cephalanthera / longifolia / (Huds.) Fritsch / Romania / Crișana / Bihor / sat Cornițel / 500 m / beech forest, northern slope, rendzina soil / 7 / June / 1967 / Neașu M. / Neașu M. / BUC 260927

Cephalanthera longifolia (L.) Fritsch / Cephalanthera / longifolia / (Huds.) Fritsch / Romania / Crișana / Bihor / sat Cornițel / 500 m / beech forest, northern slope, rendzina soil / 7 / June / 1967 / Neașu M. / Neașu M. / BUC 410755

Cephalanthera longifolia (L.) Fritsch / Cephalanthera / longifolia / (L.) Fritsch / Romania / Banat / Caraș-Severin / 13 / June / 1943 / Borza Al. / Borza Al. / BUC 285207

Cephalanthera longifolia (L.) Fritsch / Cephalanthera / longifolia / (L.) Fritsch / Romania / Banat / Caraș-Severin / 13 / June / 1943 / Borza Al. / Borza Al. / BUC 285208

Cephalanthera longifolia (L.) Fritsch / Cephalanthera / longifolia / (L.) Fritsch / Romania / Banat / Caraș-Severin / 13 / June / 1943 / Borza Al. / Borza Al. / BUC 285209

Cephalanthera longifolia (L.) Fritsch / Cephalanthera / longifolia / (L.) Fritsch / Romania / Banat / Caraș-Severin / 13 / June / 1943 / Borza Al. / Borza Al. / BUC 285210

Cephalanthera longifolia (L.) Fritsch / Cephalanthera / longifolia / (L.) Fritsch / Romania / Banat / Caraș-Severin / Poiana Mărului / 800m / ad margines Fageti prope stationem climaticam Poiana Mărului, solo schistoso / 13 / June / 1943 / Borza Al. / Borza Al. / Flora Romaniae Exsiccata a Museo Botanico Universitatis Clusienensis (Timisoara) Edita / BUC 181866

Cephalanthera longifolia (L.) Fritsch / Cephalanthera / longifolia / (L.) Fritsch / Romania / Oltenia / Mehedinți / Greci / Pădurea Greci / 29 / July / 1950 / unknown / unknown / The Geological Committee's Herbarium / BUC 182612

Cephalanthera longifolia (L.) Fritsch / Cephalanthera / longifolia / (L.) Fritsch / Romania / Transilvania / Brașov / Timișul de Jos / 4 / June / 1955 / Lungu L. / Lungu L. / BUC 410793

Cephalanthera longifolia (L.) Fritsch / Cephalanthera / longifolia / (L.) Fritsch / Romania / Transilvania / Maramureș / Baia Mare / Valea Someșului / 24 / June / 1965 / illegible / illegible / BUC 263891

Cephalanthera longifolia (L.) Fritsch / Cephalanthera / longifolia / (L.) Fritsch / Romania / Transilvania / Sălaj / Mineu S. / 47°20'09,80"N / 23°06'24,03"E / 332 m / in silvis / 14 / July / 2016 / Negrean G. / Negrean G. / Herbarium G. Negrean / BUC 406789

Cephalanthera longifolia (L.) Fritsch / Cephalanthera / longifolia / Fritsch / Romania / Oltenia / Gorj / Tismana / limestone cliffs / 19 / May / 1953 / Paucă A. / Paucă A. / BUC 182615

Cephalanthera longifolia (L.) Fritsch / Cephalanthera / pallens / Rich / Romania / Moldova / Bacău / Valea Budului / Pădurea Dumbrava / 320 m / beech forest, podzol soil / 5 / August / 1911 / Enculescu P. / Enculescu P. / Agrogeology Department Herbarium, Romanian Institute of Geology / BUC 182643

Cephalanthera longifolia (L.) Fritsch / Cephalanthera / pallens / Rich / Romania / Muntenia / Vlașca / Comana / forest / 11 / May / 1905 / Enculescu P. / Enculescu P. / Agrogeology Department Herbarium, Romanian Institute of Geology / BUC 321059

Cephalanthera longifolia (L.) Fritsch / Cephalanthera / pallens / Rich / Romania / Transilvania / Brașov / Iași / Pădurea Curmătura / 24 / May / 1917 / Enculescu P. / Enculescu P. / BUC 315994

Cephalanthera longifolia (L.) Fritsch / Cephalanthera / pallens / Rich / Romania / Transilvania / Brașov / Iași / Pădurea Curmătura / 24 / May / 1917 / Enculescu P. / Enculescu P. / BUC 315995

Cephalanthera longifolia (L.) Fritsch / Cephalanthera / pallens / Rich / Romania / Transilvania / Brașov / Iași / Pădurea Curmătura / 24 / May / 1917 / Enculescu P. / Enculescu P. / BUC 315996

Cephalanthera rubra (L.) Rich. / Cephalanthera / rubra / (L.) L. C. M. Rich. / Romania / Muntenia / Buzău / Gura Milii / Masivul Penteleu / Ruemmele M. / Petru Ș. / BUC 374272

Cephalanthera rubra (L.) Rich. / Cephalanthera / rubra / (L.) L. C. M. Rich. / Romania / Muntenia / Buzău / Gura Milii / Masivul Penteleu / Ruemmele M. / Petru Ș. / BUC 374273

- Cephalanthera rubra (L.) Rich.** / Cephalanthera / rubra / (L.) Rich. / Romania / Moldova / Neamț / 2 / July / 1960 / Lungu L. / Lungu L. / BUC 410798
- Cephalanthera rubra (L.) Rich.** / Cephalanthera / rubra / (L.) Rich. / Romania / Muntenia / Buzău / forest / 24 / July / 1935 / Enculescu P. / Enculescu P. / BUC 182553
- Cephalanthera rubra (L.) Rich.** / Cephalanthera / rubra / (L.) Rich. / Romania / Muntenia / Buzău / Gura Mili / 18 / June / 1934 / Enculescu P. / Enculescu P. / BUC 182554
- Cephalanthera rubra (L.) Rich.** / Cephalanthera / rubra / (L.) Rich. / Romania / Muntenia / Prahova / Malul Șipei / 17 / July / 1971 / unknown / unknown / BUC 410792
- Cephalanthera rubra (L.) Rich.** / Cephalanthera / rubra / (L.) Rich. / Romania / Muntenia / Prahova / Malul Șipei / 17 / July / 1971 / unknown / unknown / BUC 410834
- Cephalanthera rubra (L.) Rich.** / Cephalanthera / rubra / (L.) Rich. / Romania / Muntenia / Prahova / Malul Șipei / 17 / July / 1971 / unknown / unknown / BUC 410835
- Cephalanthera rubra (L.) Rich.** / Cephalanthera / rubra / (L.) Rich. / Romania / Muntenia / Prahova / Sinaia / illegible / by the water's edge, isolated, near spruces / 16 / July / 1971 / unknown / unknown / BUC 410836
- Cephalanthera rubra (L.) Rich.** / Cephalanthera / rubra / Rich. / Romania / Muntenia / Prahova / Sinaia / Valea Tufa, Munții Baiului / 8 / July / 1968 / Iordan T. / Iordan T. / BUC 374724
- Cephalanthera rubra (L.) Rich.** / Cephalanthera / rubra / Rich. / Romania / Muntenia / Prahova / the forest near the Șerban Voda station, podzol soil / August / 1912 / Enculescu P. / Enculescu P. / Agrogeology Department Herbarium, Romanian Institute of Geology / BUC 182642
- Corallorhiza trifida Châtel.** / Corallorhiza / trifida / Châtel. / Romania / Muntenia / Dâmbovița / Scropoasa / Lacul Scropoasa / July / 1953 / Popescu A. et Lungu L. / Popescu A. et Lungu L. / BUC 410775
- Corallorhiza trifida Châtel.** / Corallorhiza / trifida / Châtel. / Romania / Muntenia / Prahova / Sinaia / Piatra Arsa / July / 1959 / Cristurean I. / Cristurean I. / BUC 410778
- Cypripedium calceolus L.** / Cypripedium / calceolus / L. / Romania / Cîmpulung / 29 / May / 1951 / Morariu I. / Morariu I. / BUC 272236
- × **Dactylodenia illyrica (Hartmut Jahn et Kümpel) P.Delforge nothosubsp. siculorum L. Balogh et Mih. Balogh, N. Anghelescu, N. Kigyossy** / Dactylodenia / illyrica / (Hartmut Jahn et Kümpel) P.Delforge / nothosubsp. siculorum L. Balogh et Mih. Balogh, N. Anghelescu, N. Kigyossy / Romania / Transilvania / Harghita / Mădăraș / 20 / June / 2022 / Nora E. Anghelescu / Nora E. Anghelescu / BUC 410365 / Dactylorhiza cordigerasubsp. siculorum × Gymnadenia frivaldii
- × **Dactylodenia illyrica (Hartmut Jahn et Kümpel) P.Delforge nothosubsp. siculorum L. Balogh et Mih. Balogh, N. Anghelescu, N. Kigyossy** / Dactylodenia / illyrica / (Hartmut Jahn et Kümpel) P.Delforge / nothosubsp. siculorum L. Balogh et Mih. Balogh, N. Anghelescu, N. Kigyossy / Romania / Transilvania / Harghita / Mădăraș / 20 / June / 2022 / Nora E. Anghelescu / Nora E. Anghelescu / BUC 410366 / Dactylorhiza cordigera subsp. siculorum × Gymnadenia frivaldii
- × **Dactylodenia lebrunii (E. G. Camus) Peitz** / Dactylodenia / lebrunii / (E. G. Camus) Peitz / Romania / Transilvania / Harghita / Vlăhița / Ținutul Secuiesc (proprietate privată) / 2 / June / 2019 / Nora E. Anghelescu / Nora E. Anghelescu / BUC 410367 / Dactylorhiza majalis × Gymnadenia conopsea
- × **Dactylodenia lebrunii (E. G. Camus) Peitz** / Dactylodenia / lebrunii / (E. G. Camus) Peitz / Romania / Transilvania / Harghita / Vlăhița / Ținutul Secuiesc (proprietate privată) / 2 / June / 2019 / Nora E. Anghelescu / Nora E. Anghelescu / BUC 410368 / Dactylorhiza majalis × Gymnadenia conopsea
- × **Dactylodenia sinaiensis N. Kigyossy, N. Anghelescu, L. Balogh et Mih. Balogh** / Dactylodenia / sinaiensis / N. Kigyossy, N. Anghelescu, L. Balogh et Mih. Balogh / Romania / Muntenia / Prahova / Parcul Natural Bucegi / 2 / 7 / 2023 / Nora E. Anghelescu / Nora E. Anghelescu / BUC 410369 / Dactylorhiza majalis × Gymnadenia conopsea
- × **Dactylodenia sinaiensis N. Kigyossy, N. Anghelescu, L. Balogh et Mih. Balogh** / Dactylodenia / sinaiensis / N. Kigyossy, N. Anghelescu, L. Balogh et Mih. Balogh / Romania / Muntenia / Prahova / Parcul Natural Bucegi / 2 / 7 / 2023 / Nora E. Anghelescu / Nora E. Anghelescu / BUC 410370 / Dactylorhiza majalis × Gymnadenia conopsea
- Dactylorhiza incarnata (L.) Soó** / Dactylorhiza / incarnata / (L.) Soó / Romania / Munții Bucegi / June / 1946 / unknown / Urziceanu M. & Comănescu P. / BUC 319953
- Dactylorhiza incarnata (L.) Soó** / Orchis / incarnata / L. / Romania / Dobrogea / Constanța / Techirghiol / Lacul Techirghiol / in a small freshwater ditch near Lake Techirghiol. / 24 / May / 1908 / Enculescu P. / Enculescu P. / BUC 182628
- Dactylorhiza incarnata (L.) Soó** / Orchis / incarnata / L. / Romania / Transilvania / Maramureș / Hideaga / 27 / May / 1959 / unknown / unknown / BUC 314442
- Dactylorhiza incarnata (L.) Soó** / Orchis / incarnata / L. / Romania / Transilvania / Maramureș / Hideaga / 27 / May / 1959 / unknown / unknown / BUC 314443

- Dactylorhiza incarnata subsp. incarnata** / Orchis / latifolia / L. / Romania / 17 / July / 1934 / unknown / unknown / BUC 315501
- Dactylorhiza incarnata subsp. incarnata** / Orchis / latifolia / L. / Romania / 17 / July / 1934 / unknown / unknown / BUC 315502
- Dactylorhiza incarnata subsp. incarnata** / Orchis / latifolia / L. / Romania / 17 / July / 1934 / unknown / unknown / BUC 315503
- Dactylorhiza incarnata subsp. incarnata** / Orchis / latifolia / L. / Romania / Oltenia / Gorj / Peștișani / in the forest west of Peștișani, podzol soil / 31 / May / 1913 / Enculescu P. / Enculescu P. / Agrogeology Department Herbarium, Romanian Institute of Geology / BUC 182629
- Dactylorhiza incarnata subsp. incarnata** / Orchis / latifolius / L. / Romania / Muntenia / Prahova / Plopeni / in the forest north-west of Plopeni, podzol soil / 17 / May / 1913 / Enculescu P. / Enculescu P. / Agrogeology Department Herbarium, Romanian Institute of Geology / BUC 182622
- Dactylorhiza incarnata subsp. incarnata** / Orchis / latifolius / L. / Romania / Muntenia / Prahova / Sinaia / Poiana Cumpătul / 27 / June / 1956 / Rădulescu D. / Rădulescu D. / BUC 271266
- Dactylorhiza incarnata subsp. incarnata** / Orchis / latifolius / L. / Romania / Muntenia / Prahova / Sinaia / Poiana Stânei / 20 / May / 1909 / Enculescu P. / Enculescu P. / Agrogeology Department Herbarium, Romanian Institute of Geology / BUC 182618
- Dactylorhiza incarnata subsp. incarnata** / Orchis / latifolius / L. / Romania / Muntenia / Prahova / Sinaia / Poiana Stânei / 20 / May / 1909 / Enculescu P. / Enculescu P. / Agrogeology Department Herbarium, Romanian Institute of Geology / BUC 182623
- Dactylorhiza incarnata subsp. incarnata** / Orchis / latifolius / L. / Romania / Muntenia / Prahova / Sinaia / the meadow behind the resort / 27 / June / 1956 / Rădulescu D. / Rădulescu D. / BUC 273147
- Dactylorhiza incarnata subsp. incarnata** / Orchis / latifolius / L. / Romania / Muntenia / Prahova / Sinaia / the meadow behind the resort / 27 / June / 1956 / Rădulescu D. / Rădulescu D. / BUC 273146
- Dactylorhiza maculata (L.) Soó** / Dactylorhiza / maculata / (L.) Soó / Romania / Oltenia / Mehedinți / Busești / Mlaștina fără fund / 44°56'54,16"N / 22°43'08,11"E / 564 m / 6 / July / 2017 / Negrean G. / Simion I. / Herbarium G. Negrean / BUC 407459
- Dactylorhiza maculata (L.) Soó** / Orchis / maculata / L. / Romania / 1250m / high humidity hayfield / 4 / June / 1973 / unknown / unknown / BUC 342224
- Dactylorhiza maculata (L.) Soó** / Orchis / maculata / L. / Romania / 7 / June / 1959 / unknown / unknown / BUC 319542
- Dactylorhiza maculata (L.) Soó** / Orchis / maculata / L. / Romania / Crișana / Satu Mare / Pădurea Cioace / 23 / May / 1953 / Paucă A. / Paucă A. / BUC 268011
- Dactylorhiza maculata (L.) Soó** / Orchis / maculata / L. / Romania / Crișana / Satu Mare / Pădurea Cioace / 23 / May / 1953 / Paucă A. / Paucă A. / BUC 268012
- Dactylorhiza maculata (L.) Soó** / Orchis / maculata / L. / Romania / Crișana / Satu Mare / Pădurea Cioace / 25 / May / 1953 / Paucă A. / Paucă A. / BUC 268014
- Dactylorhiza maculata (L.) Soó** / Orchis / maculata / L. / Romania / Crișana / Satu Mare / Pădurea Cioace / 25 / May / 1953 / Paucă A. / Paucă A. / BUC 268015
- Dactylorhiza maculata (L.) Soó** / Orchis / maculata / L. / Romania / Crișana / Satu Mare / Pădurea Cioace / 25 / May / 1953 / Paucă A. / Paucă A. / BUC 268016
- Dactylorhiza maculata (L.) Soó** / Orchis / maculata / L. / Romania / Moldova / Neamț / Bicz / 5 / June / 1959 / unknown / unknown / BUC 319541
- Dactylorhiza maculata (L.) Soó** / Orchis / maculata / L. / Romania / Moldova / Neamț / Bicz / 5 / June / 1959 / unknown / unknown / BUC 319543
- Dactylorhiza maculata (L.) Soó** / Orchis / maculata / L. / Romania / Muntenia / Argeș / Zăvoi / 16 / May / 1963 / unknown / unknown / BUC 263482
- Dactylorhiza maculata (L.) Soó** / Orchis / maculata / L. / Romania / Muntenia / Argeș / Zăvoi / 16 / May / 1963 / unknown / unknown / BUC 263483
- Dactylorhiza maculata (L.) Soó** / Orchis / maculata / L. / Romania / Muntenia / Buzău / Gura Milii / hayfield / 16 / June / 1934 / Enculescu P. / Enculescu P. / BUC 182533
- Dactylorhiza maculata (L.) Soó** / Orchis / maculata / L. / Romania / Muntenia / Giurgiu / Găiseni / Pădurea Căscioarele / 27 / June / 1971 / Brăiteanu M. / Brăiteanu M. / BUC 316141
- Dactylorhiza maculata (L.) Soó** / Orchis / maculata / L. / Romania / Muntenia / Ilfov / Bărzești / near the lake, alluvial soil / 25 / May / 1903 / Enculescu P. / Enculescu P. / Agrogeology Department Herbarium, Romanian Institute of Geology / BUC 182627
- Dactylorhiza maculata (L.) Soó** / Orchis / maculata / L. / Romania / Muntenia / Prahova / Busești / Valea Cerbului / 21 / June / 1956 / Salmen H. / Salmen H. / BUC 315638

Dactylorhiza maculata (L.) Soó / Orchis / maculata / L. / Romania / Muntenia / Prahova / Busești / Valea Cerbului / 21 / June / 1956 / Salmen H. / Salmen H. / BUC 315639

Dactylorhiza maculata (L.) Soó / Orchis / maculata / L. / Romania / Muntenia / Prahova / Munții Ciucaș, Valea Berii / left affluent of the Valea Berii / 3 / July / 1959 / Șerbănescu G. / Șerbănescu et Mitroiu N. / BUC 315930

Dactylorhiza maculata (L.) Soó / Orchis / maculata / L. / Romania / Muntenia / Prahova / Munții Ciucaș, Valea Berii / left affluent of the Valea Berii / 3 / July / 1959 / Șerbănescu G. / Șerbănescu et Mitroiu N. / BUC 315931

Dactylorhiza maculata (L.) Soó / Orchis / maculata / L. / Romania / Muntenia / Prahova / Sinaia / Poiana Republicii / 6 / June / 1957 / Rădulescu D. / Rădulescu D. / BUC 273144

Dactylorhiza maculata (L.) Soó / Orchis / maculata / L. / Romania / Muntenia / Prahova / Sinaia / Poiana Republicii / 6 / June / 1957 / unknown / unknown / BUC 319952

Dactylorhiza maculata (L.) Soó / Orchis / maculata / L. / Romania / Muntenia / Prahova / Sinaia / Poiana Șarînga / 800 m / meadow / 17 / June / 1987 / Buculei P. / Buculei P. / BUC 375358

Dactylorhiza maculata (L.) Soó / Orchis / maculata / L. / Romania / Oltenia / Gorj / Târgu Jiu / Pădurea Dumbrava, Valea Peștișani / 28 / May / 1953 / Paucă A. / Paucă A. / BUC 268126

Dactylorhiza maculata (L.) Soó / Orchis / maculata / L. / Romania / Oltenia / Gorj / Târgu Jiu / Pădurea Dumbrava, Valea Peștișani / 28 / May / 1953 / Paucă A. / Paucă A. / BUC 268127

Dactylorhiza maculata (L.) Soó / Orchis / maculata / L. / Romania / Oltenia / Mehedinți / illegible / podzol soil / 31 / May / 1913 / Enculescu P. / Enculescu P. / Agrogeology Department Herbarium, Romanian Institute of Geology / BUC 182625

Dactylorhiza maculata (L.) Soó / Orchis / maculata / L. / Romania / Piatra Craiului Crăpătura / 26 / May / 1968 / Heltmann H. / Heltmann H. / Herbarium H. Heltmann / BUC 273529

Dactylorhiza maculata (L.) Soó / Orchis / maculata / L. / Romania / Transilvania / Brașov / Piatra Craiului / meadow / 16 / June / 1967 / Ruemmele M. / Ruemmele M. / BUC 312885

Dactylorhiza maculata (L.) Soó / Orchis / maculata / L. / Romania / Transilvania / Brașov / Piatra Craiului / meadow / 16 / June / 1967 / Ruemmele M. / Ruemmele M. / BUC 312886

Dactylorhiza maculata (L.) Soó / Orchis / maculata / L. / Romania / Vârful Curse / in the shade / 30 / May / 1936 / Enculescu P. / Enculescu P. / BUC 182545

Dactylorhiza maculata (L.) Soó / Orchis / maculata / L. / Romania / Vârful Curse / June / 1936 / unknown / unknown / BUC 315504

Dactylorhiza maculata (L.) Soó / Orchis / maculata / L. / Romania / Vârful Curse / June / 1936 / unknown / unknown / BUC 315505

Dactylorhiza maculata (L.) Soó / Orchis / maculata / Romania / Botnariuc I. / Botnariuc I. / BUC 282481

Dactylorhiza maculata (L.) Soó / Orchis / maculata / Romania / Crișana / Satu Mare / Pădurea Cioace / 23 / May / 1953 / Paucă A. / Paucă A. / BUC 268010

Dactylorhiza maculata (L.) Soó / Orchis / maculata / Romania / Crișana / Satu Mare / Pădurea Cioace / 23 / May / 1953 / Paucă A. / Paucă A. / BUC 268013

Dactylorhiza maculata (L.) Soó / Orchis / maculata / Romania / Muntenia / Prahova / Sinaia / June / 1974 / Botnariuc I. / Botnariuc I. / BUC 282480

Dactylorhiza maculata subsp. fuchsii (Druce) Hyl. / Dactylorchis / fuchsii / (Druce) Verm. / fuchsii / United Kingdom / East Midlands / Derbyshire / Tideswell / Cressbrook Dale-Ravensdale / limestone / April / 1962 / Ball P.W., Brummitt R.K., Cook C.D.K., Gibbs P.E. / Ball P.W., Brummitt R.K., Cook C.D.K., Gibbs P.E. / Herb. Univ. Liverpool. / BUC 170758

Dactylorhiza maculata subsp. saccifera (Brongn.) Diklic / Dactylorhiza / saccifera / (Brongn.) Soó / Romania / Muntenia / Buzău / Cocârceni / wet meadow / 9 / June / 2014 / Anastasiu P. / Anastasiu P. / BUC 401678

Dactylorhiza majalis subsp. cordigera (Fr.) H.Sund. / Orchis / cordigera / Fr. / Romania / Muntenia / Buzău / Masivul Penteleu / 3 / August / 1932 / unknown / unknown / BUC 315495

Dactylorhiza majalis subsp. cordigera (Fr.) H.Sund. / Orchis / cordigera / Fr. / Romania / Muntenia / Buzău / Masivul Penteleu / 3 / August / 1932 / unknown / unknown / BUC 315496

Dactylorhiza majalis subsp. cordigera (Fr.) H.Sund. / Orchis / cordigera / Fr. / Romania / Muntenia / Buzău / Masivul Penteleu / 3 / August / 1932 / unknown / unknown / BUC 315497

Dactylorhiza majalis subsp. cordigera (Fr.) H.Sund. / Orchis / cordigera / Fr. / Romania / Muntenia / Buzău / Masivul Penteleu / 3 / August / 1932 / unknown / unknown / BUC 315498

Dactylorhiza majalis subsp. cordigera (Fr.) H.Sund. / Orchis / cordigera / Fr. / Romania / Muntenia / Buzău / Masivul Penteleu / 3 / August / 1932 / unknown / unknown / BUC 315500

- Dactylorhiza majalis subsp. cordigera (Fr.) H.Sund.** / Orchis / cordigera / Fr. / Romania / Muntenia / Prahova / Poiana Braşov / meadow / 9 / June / 1976 / Ularu P. / Ularu P. / Pedagogical Institute Braşov Herbarium / BUC 171816
- Dactylorhiza majalis subsp. cordigera (Fr.) H.Sund.** / Orchis / cordigera / Fr. / Romania / Muntenia / Prahova / Sinaia / Poiana Republicii / 6 / June / 1957 / Rădulescu D. / Rădulescu D. / BUC 273142
- Dactylorhiza majalis subsp. cordigera (Fr.) H.Sund.** / Orchis / cordigera / Fr. / Romania / Muntenia / Prahova / Sinaia / Poiana Republicii / 6 / June / 1957 / unknown / unknown / BUC 319950
- Dactylorhiza majalis subsp. cordigera (Fr.) H.Sund.** / Orchis / cordigera / Fr. / Romania / Muntenia / Prahova / Sinaia / Poiana Stănei / podzol soil / June / 1907 / Enculescu P. / Enculescu P. / Agrogeology Department Herbarium, Romanian Institute of Geology / BUC 182631
- Dactylorhiza majalis subsp. cordigera (Fr.) H.Sund.** / Orchis / cordigera / Romania / Muntenia / Buzău / Masivul Penteleu / 3 / August / 1932 / unknown / unknown / BUC 315499
- Dactylorhiza x ruppertii (M. Schulze) Borsos et Soó** / Dactylorhiza / ruppertii / (M. Schulze) Borsos et Soó / Romania / Transilvania / Harghita / 10 / June / 2021 / Nora E. Angheliescu / Nora E. Angheliescu / BUC 410371 / Dactylorhiza majalis × Dactylorhiza sambucina
- Dactylorhiza x ruppertii (M. Schulze) Borsos et Soó** / Dactylorhiza / ruppertii / (M. Schulze) Borsos et Soó / Romania / Transilvania / Harghita / 10 / June / 2021 / Nora E. Angheliescu / Nora E. Angheliescu / BUC 410372 / Dactylorhiza majalis × Dactylorhiza sambucina
- Dactylorhiza x ruppertii f. rubra (M. Schulze) Borsos et Soó** / Dactylorhiza / ruppertii / (M. Schulze) Borsos et Soó / rubra (M. Schulze) Borsos et Soó / Romania / Transilvania / Harghita / 10 / June / 2021 / Nora E. Angheliescu / Nora E. Angheliescu / BUC 410373 / Dactylorhiza majalis × Dactylorhiza sambucina
- Dactylorhiza x ruppertii f. rubra (M. Schulze) Borsos et Soó** / Dactylorhiza / ruppertii / (M. Schulze) Borsos et Soó / rubra (M. Schulze) Borsos et Soó / Romania / Transilvania / Harghita / 10 / June / 2021 / Nora E. Angheliescu / Nora E. Angheliescu / BUC 410374 / Dactylorhiza majalis × Dactylorhiza sambucina
- Dactylorhiza sambucina (L.) Soó** / Orchis / sambucina / L. / Romania / 1300 m / forest edge / unknown / unknown / BUC 342210
- Dactylorhiza sambucina (L.) Soó** / Orchis / sambucina / L. / Romania / 1300 m / forest edge / unknown / unknown / BUC 342211
- Dactylorhiza sambucina (L.) Soó** / Orchis / sambucina / L. / Romania / Muntenia / Buzău / Masivul Penteleu / 11 / July / 1933 / Enculescu P. / Enculescu P. / BUC 182550
- Dactylorhiza sambucina (L.) Soó** / Orchis / sambucina / L. / Romania / Muntenia / Prahova / Muntele Roşu, Masivul Ciucaş / 900 m / subalpine meadow / 10 / May / 1968 / Ruemmele M. et Silvia / Ruemmele M. / BUC 176146
- Dactylorhiza sambucina (L.) Soó** / Orchis / sambucina / L. / Romania / Muntenia / Prahova / Sinaia / Poiana Stănei / 20 / May / 1909 / Enculescu P. / Enculescu P. / Agrogeology Department Herbarium, Romanian Institute of Geology / BUC 182620
- Dactylorhiza sambucina (L.) Soó** / Orchis / sambucina / L. / Romania / Muntenia / Prahova / Sinaia / Poiana Stănei / podzol soil / 10 / May / 1907 / Enculescu P. / Enculescu P. / Agrogeology Department Herbarium, Romanian Institute of Geology / BUC 182641
- Dactylorhiza sambucina (L.) Soó** / Orchis / sambucina / L. / Romania / Oltenia / Gorj / Peştişani / in the forest west of Peştişani, podzol soil / 31 / May / 1913 / Enculescu P. / Enculescu P. / Agrogeology Department Herbarium, Romanian Institute of Geology / BUC 182624
- Dactylorhiza sambucina (L.) Soó** / Orchis / sambucina / M.Schulze / bracteata / Romania / Transilvania / Braşov / Munţii Ciucaş / the hayfields from Babarunca / 17 / May / 1959 / illegible / illegible / Herbarium H. Heltmann / BUC 273530
- Dactylorhiza sambucina (L.) Soó** / Orchis / sambucina / Romania / Banat / Caraş-Severin / Anina / near Margitaş orchard, forest edge / unknown / unknown / Faculty of Silviculture Herbarium, Politehnica University of Bucharest / BUC 209335
- Dactylorhiza sambucina (L.) Soó** / Orchis / sambucinus / L. / Romania / Muntenia / Prahova / Sinaia / Izvorul Pelişorului / cohesive soil, wetland / 10 / May / 1907 / Enculescu P. / Enculescu P. / Agrogeology Department Herbarium, Romanian Institute of Geology / BUC 182621
- Dactylorhiza sambucina (L.) Soó** / Orchis / sambucinus / L. / Romania / Muntenia / Prahova / Sinaia / Poiana Republicii / 6 / June / 1957 / Rădulescu D. / Rădulescu D. / BUC 273149
- Dactylorhiza sambucina (L.) Soó** / Orchis / sambucinus / L. / Romania / Muntenia / Prahova / Sinaia / Poiana Republicii / 6 / June / 1957 / unknown / unknown / BUC 319951
- Dactylorhiza sambucina (L.) Soó** / Orchis / sambucinus / L. / Romania / Muntenia / Prahova / Sinaia / Poiana Stănei / 18 / May / 1958 / Mitroiu N. / Mitroiu N. / BUC 371832

Dactylorhiza sambucina (L.) Soó / Orchis / sambucinus / L. / Romania / Muntenia / Prahova / Sinaia / Poiana Stânei / June / 1907 / Enculescu P. / Enculescu P. / Agrogeology Department Herbarium, Romanian Institute of Geology / BUC 182619

Dactylorhiza viridis (L.) R.M.Bateman, Pridgeon & M.W.Chase / Coeloglossum / viride / (L.) Hartm. / bracteatum (Richt.) / Romania / Muntenia / Buzău / Masivul Penteleu / 11 / July / 1933 / Enculescu P. / Enculescu P. / BUC 182523

Dactylorhiza viridis (L.) R.M.Bateman, Pridgeon & M.W.Chase / Coeloglossum / viride / (L.) Hartm. / bracteatum (Richt.) / Romania / Muntenia / Dâmbovița / Viforâta / 20 / July / 1934 / unknown / unknown / BUC 182525

Dactylorhiza viridis (L.) R.M.Bateman, Pridgeon & M.W.Chase / Coeloglossum / viride / (L.) Hartm. / bracteatum (Richt.) / Romania / Transilvania / Harghita / Deal Lacul Roșu / 14 / July / 1933 / unknown / unknown / BUC 182524

Dactylorhiza viridis (L.) R.M.Bateman, Pridgeon & M.W.Chase / Coeloglossum / viride / (L.) Hartm. / bracteatum (Richt.) / Romania / Transilvania / Harghita / Lacul Roșu / the western hill / 13 / July / 1933 / Schuman J. / Schuman J. / BUC 182526

Dactylorhiza viridis (L.) R.M.Bateman, Pridgeon & M.W.Chase / Coeloglossum / viride / (L.) Hartm. / bracteatum (Wild.) Richt. / Romania / Muntenia / Prahova / Munții Bucegi, Vârful Caraiman / 4 / August / 1949 / Tarnavski I.T / Beldie / BUC 342503

Dactylorhiza viridis (L.) R.M.Bateman, Pridgeon & M.W.Chase / Coeloglossum / viride / (L.) Hartm. / Romania / 23-31 / July / 1965 / unknown / unknown / BUC 410805

Dactylorhiza viridis (L.) R.M.Bateman, Pridgeon & M.W.Chase / Coeloglossum / viride / (L.) Hartm. / Romania / Muntenia / Dâmbovița / Scropoasa / Lacul Scropoasa / July / 1953 / Popescu A. et Lungu L. / Popescu A. et Lungu L. / BUC 410791

Dactylorhiza viridis (L.) R.M.Bateman, Pridgeon & M.W.Chase / Coeloglossum / viride / (L.) Hartm. / Romania / Muntenia / Dâmbovița / Scropoasa / Lacul Scropoasa / July / 1953 / Popescu A. et Lungu L. / Popescu A. et Lungu L. / BUC 410803

Dactylorhiza viridis (L.) R.M.Bateman, Pridgeon & M.W.Chase / Coeloglossum / viride / (L.) Hartm. / Romania / Muntenia / Dâmbovița / Valea Horoabei / 8 / August / 1946 / Tarnavski I.T / Tarnavski I.T / BUC 283091

Dactylorhiza viridis (L.) R.M.Bateman, Pridgeon & M.W.Chase / Coeloglossum / viride / (L.) Hartm. / Romania / Muntenia / Dâmbovița / Valea Horoabei / 8 / August / 1946 / Tarnavski I.T / Tarnavski I.T / BUC 283092

Dactylorhiza viridis (L.) R.M.Bateman, Pridgeon & M.W.Chase / Coeloglossum / viride / (L.) Hartm. / Romania / Muntenia / Munții Bucegi, Vârful Caraiman / 2000 m / 21 / July / 1925 / Borza Al. / Borza Al. / BUC 249516

Dactylorhiza viridis (L.) R.M.Bateman, Pridgeon & M.W.Chase / Coeloglossum / viride / (L.) Hartm. / Romania / Muntenia / Prahova / Munții Bucegi, Jepii Mici / 18 / August / 1963 / Popescu A. / Popescu A. / BUC 410787

Dactylorhiza viridis (L.) R.M.Bateman, Pridgeon & M.W.Chase / Coeloglossum / viride / (L.) Hartm. / Romania / Muntenia / Prahova / Ploiești / illegible / 13 / August / 1953 / unknown / unknown / BUC 268833

Dactylorhiza viridis (L.) R.M.Bateman, Pridgeon & M.W.Chase / Coeloglossum / viride / (L.) Hartm. / Romania / Muntenia / Prahova / Poiana Țapului, Urlătoarea / 14 / July / 1956 / unknown / unknown / BUC 410789

Dactylorhiza viridis (L.) R.M.Bateman, Pridgeon & M.W.Chase / Coeloglossum / viride / (L.) Hartm. / Romania / Muntenia / Prahova / Sinaia / Vârful cu Dor / 21 / June / 1968 / Cristurean I. / Cristurean I. / BUC 410785

Dactylorhiza viridis (L.) R.M.Bateman, Pridgeon & M.W.Chase / Coeloglossum / viride / (L.) Hartm. / Romania / Munții Bucegi / 16 / July / 1946 / unknown / unknown / BUC 283142

Dactylorhiza viridis (L.) R.M.Bateman, Pridgeon & M.W.Chase / Coeloglossum / viride / (L.) Hartm. / Romania / Munții Bucegi / July / 1959 / Cristurean I. / Cristurean I. / BUC 410786

Dactylorhiza viridis (L.) R.M.Bateman, Pridgeon & M.W.Chase / Coeloglossum / viride / (L.) Hartm. / Romania / Transilvania / Munții Sebeșului / 1 / August / 1949 / Borza Al. / Borza Al. / BUC 285211

Dactylorhiza viridis (L.) R.M.Bateman, Pridgeon & M.W.Chase / Coeloglossum / viride / (L.) Hartm. / Romania / Transilvania / Sibiu / Lacul Iezerul Mare / 20 / July / 1960 / Ștefureac Tr. et Cristurean I. / Ștefureac Tr. et Cristurean I. / BUC 410783

Dactylorhiza viridis (L.) R.M.Bateman, Pridgeon & M.W.Chase / Coeloglossum / viride / (L.) Hartm. / Romania / Transilvania / Sibiu / Lacul Iezerul Mare / 20 / July / 1960 / Ștefureac Tr. et Cristurean I. / Ștefureac Tr. et Cristurean I. / BUC 410804

- Dactylorhiza viridis (L.) R.M.Bateman, Pridgeon & M.W.Chase** / Coeloglossum / viride / (L.) Hartm. / Romania / Transilvania / Sibiu / Lacul Iezerul Mare / 20 / July / 1960 / unknown / unknown / BUC 410788
- Dactylorhiza viridis (L.) R.M.Bateman, Pridgeon & M.W.Chase** / Coeloglossum / viride / (L.) Hartm. / Romania / Transilvania / Trei Scaune / Zalău / forest / 25 / July / 1927 / Paucă A. / Paucă A. / BUC 268835
- Dactylorhiza viridis (L.) R.M.Bateman, Pridgeon & M.W.Chase** / Coeloglossum / viride / (L.) Hartm. / Romania / Transilvania / Turda / Muntele Scărița-Belioara / 1200 m / 10 / June / 1950 / Trețiu Tr. / Trețiu Tr. / BUC 176662
- Epipactis atrorubens (Hoffm.) Besser** / Epipactis / atropurpurea / Raf. / Romania / Bucovina / Suceava / Benia / 12 / August / 1959 / Cristurean I. / Cristurean I. / BUC 410811
- Epipactis atrorubens (Hoffm.) Besser** / Epipactis / atropurpurea / Raf. / Romania / Moldova / Suceava / Drăgoiasa / Tinovul Mare / 30 / July / 1963 / Cristurean I. / Cristurean I. / BUC 410808
- Epipactis atrorubens (Hoffm.) Besser** / Epipactis / atropurpurea / Raf. / Romania / Muntenia / Ilfov / Ciolpani / 100m / in silvis / 22 / July / 1947 / Morariu I. / Morariu I. / Flora Romaniae Exsiccata A Herbario Universitatis Napocensis Edita / BUC 285206
- Epipactis atrorubens (Hoffm.) Besser** / Epipactis / atropurpurea / Raf. / Romania / Slătioara / 6 / August / 1958 / Ștefureac Tr. et Cristurean I. / Ștefureac Tr. et Cristurean I. / BUC 410810
- Epipactis atrorubens (Hoffm.) Besser** / Epipactis / atropurpurea / Raf. / Romania / Transilvania / Bistrița-Năsăud / 1600m / in sax. calc.ad „Poarta la Corongiș” / 8 / August / 1925 / Borza Al. / Borza Al. / BUC 249521
- Epipactis atrorubens (Hoffm.) Besser** / Epipactis / atropurpurea / Raf. / Romania / Transilvania / Carpații Meridionali, Munții Sebeșului / 780m / in Fagetis / 11 / July / 1950 / Borza Al. / Borza Al. / BUC 249522
- Epipactis atrorubens (Hoffm.) Besser** / Epipactis / atropurpurea / Romania / Transilvania / Brașov / Tâmpa / forest / July / 1956 / Morariu I. / Morariu I. / BUC 339919
- Epipactis bucegensis N. Angheliescu, L. Balogh et Mih. Balogh** / Epipactis / bucegensis / N. Angheliescu, L. Balogh et Mih. Balogh / Romania / Muntenia / Prahova / Parcul Natural Bucegi / 26 / 7 / 2009 / Nora E. Angheliescu / Nora E. Angheliescu / BUC 410375 /
- Epipactis bucegensis N. Angheliescu, L. Balogh et Mih. Balogh** / Epipactis / bucegensis / N. Angheliescu, L. Balogh et Mih. Balogh / Romania / Muntenia / Prahova / Parcul Natural Bucegi / 26 / 7 / 2009 / Nora E. Angheliescu / Nora E. Angheliescu / BUC 410376 /
- Epipactis bucegensis N. Angheliescu, L. Balogh et Mih. Balogh** / Epipactis / bucegensis / N. Angheliescu, L. Balogh et Mih. Balogh / Romania / Muntenia / Prahova / Parcul Natural Bucegi / 26 / 7 / 2009 / Nora E. Angheliescu / Nora E. Angheliescu / BUC 410377 /
- Epipactis bucegensis N. Angheliescu, L. Balogh et Mih. Balogh** / Epipactis / bucegensis / Romania / Muntenia / Prahova / Sinaia / Cota 1000 / meadow / 17 / June / 2022 / Nora E. Angheliescu / Nora E. Angheliescu / BUC410357 / HOLOTYPE
- Epipactis helleborine subsp. helleborine** / Epipactis / latifolia / (L.) All. / Romania / Crișana / Arad / Arad / Pădurea Ceala / 90m / in silvis Ciala prope oppid, solo argill / 9 / July / 1941 / Cosma C. / Cosma C. / Flora Romaniae Exsiccata a Museo Botanico Universitatis Clusienensis Edita (Cluj) / BUC 209011
- Epipactis helleborine subsp. helleborine** / Epipactis / latifolia / (L.) All. / Romania / Moldova / Iași / Bârnova / Dealul Repedeș / 14 / July / 1958 / Ștefureac Tr. et Cristurean I. / Ștefureac Tr. et Cristurean I. / BUC 410776
- Epipactis helleborine subsp. helleborine** / Epipactis / latifolia / (L.) All. / Romania / Moldova / Iași / Bârnova / Dealul Repedeș / 14 / July / 1958 / Ștefureac Tr. et Cristurean I. / Ștefureac Tr. et Cristurean I. / BUC 410777
- Epipactis helleborine subsp. helleborine** / Epipactis / latifolia / (L.) All. / Romania / Muntenia / Dâmbovița / Scropoasa / Lacul Scropoasa / July / 1953 / Cristurean I. / Cristurean I. / BUC 410813
- Epipactis helleborine subsp. helleborine** / Epipactis / latifolia / (L.) All. / Romania / Muntenia / Dâmbovița / Scropoasa / Lacul Scropoasa / July / 1953 / Popescu A. et Lungu L. / Popescu A. et Lungu L. / BUC 410807
- Epipactis helleborine subsp. helleborine** / Epipactis / latifolia / (L.) All. / Romania / Muntenia / Giurgiu / Comana / 3 / June / 1963 / Popescu A. / Popescu A. / BUC 410812
- Epipactis helleborine subsp. helleborine** / Epipactis / latifolia / (L.) All. / Romania / Muntenia / Ilfov / Cernica / 70 m / oak forest / 23 / June / 1957 / Cristurean I. / Cristurean I. / BUC 373011
- Epipactis helleborine subsp. helleborine** / Epipactis / latifolia / (L.) All. / Romania / Muntenia / Pădurea Cernica / 23 / June / 1957 / Cristurean I. / Cristurean I. / BUC 410806

- Epipactis helleborine subsp. helleborine** / *Epipactis / latifolia* / (L.) All. / Romania / Muntenia / Prahova / Sinaia / Valea Peleşului / 9 / July / 1968 / Iordan T. / Iordan T. / BUC 344368
- Epipactis helleborine subsp. helleborine** / *Epipactis / latifolia* / (L.) All. / Romania / Oltenia / Gorj / Valea Mare / 210m / near the cave / unknown / unknown / BUC 268837
- Epipactis helleborine subsp. helleborine** / *Epipactis / latifolia* / (L.) All. / Romania / Transilvania / Braşov / Timişul de Jos / 1 / August / 1955 / Tarnavschi I.T et. Tatamir N. / Tarnavschi I.T et. Tatamir N. / BUC 285026
- Epipactis helleborine subsp. helleborine** / *Epipactis / latifolia* / (L.) All. / Romania / Transilvania / Braşov / Timişul de Jos / 1 / August / 1955 / Tarnavschi I.T et. Tatamir N. / Tarnavschi I.T et. Tatamir N. / BUC 285027
- Epipactis helleborine subsp. helleborine** / *Epipactis / latifolia* / All. / Romania / Moldova / Neamţ / Obcina Lacurilor / 1919 / Enculescu P. / Enculescu P. / BUC 268836
- Epipactis helleborine subsp. helleborine** / *Epipactis / latifolia* / All. / Romania / Muntenia / Ilfov / Brăneşti / Pădurea Pasărea / 17 / July / 1934 / Enculescu P. / Enculescu P. / BUC 182548
- Epipactis helleborine subsp. helleborine** / *Epipactis / latifolia* / All. / Romania / Muntenia / Ilfov / Brăneşti / Pădurea Pasărea / 17 / July / 1934 / Enculescu P. / Enculescu P. / BUC 182549
- Epipactis helleborine subsp. helleborine** / *Epipactis / latifolia* / Romania / Muntenia / Argeş / Piteşti / the forest in the north of Slătioara / 1 / August / 1960 / Rema N et Şt. / Rema N et Şt. / BUC 319230
- Epipactis helleborine subsp. helleborine** / *Epipactis / latifolia* / United Kingdom / East Midlands / Derbyshire / copse beyond Perthags towards longford / 4 / August / 1906 / Linton W.R. / Linton W.R. / Herb. Univ. Liverpool. / BUC 170759
- Epipactis helleborine subsp. helleborine** / *Epipactis / latifolius* / (L.) All. / Romania / Banat / Caraş-Severin / Zăvoi / 18 / July / unknown / unknown / BUC 410799
- Epipactis helleborine subsp. helleborine** / *Epipactis / latifolius* / (L.) Druce / Romania / Muntenia / Argeş / Piteşti / unknown / unknown / BUC 410809
- Epipactis leptochila subsp. leptochila** / *Epipactis / leptochila* / (Godfery) Godfery / leptochila / Romania / Transilvania / Cluj / Cheile Turzii / 46°33'50,90"N / 23°41'10,56"E / 446 m / the Haşdate creek floodplain / 12 / August / 2016 / Negrean G., Brădeanu A. / Negrean G., Brădeanu A. / Herbarium G. Negrean / BUC 406790
- Epipactis microphylla (Ehrh.) Sw.** / *Epipactis / microphylla* / (Ehrh.) Sw. / Romania / Muntenia / Prahova / Malul Şipei / 22 / July / 1971 / illegible / illegible / BUC 410828
- Epipactis microphylla (Ehrh.) Sw.** / *Epipactis / microphylla* / (Ehrh.) Sw. / Romania / Muntenia / Prahova / Sinaia / on the way to Peleş Castle / 21 / July / 1971 / unknown / unknown / BUC 410827
- Epipactis microphylla (Ehrh.) Sw.** / *Epipactis / microphylla* / Sw. / Romania / Paucă A. / Paucă A. / BUC 268832
- Epipactis microphylla (Ehrh.) Sw.** / *Epipactis / microphylla* / Sw. / Romania / Transilvania / Sălaj / Zalău / 25 / July / 1927 / Paucă A. / Paucă A. / BUC 268831
- Epipactis microphylla (Ehrh.) Sw.** / *Epipactis / microphylla* / Sw. / Romania / Transilvania / Sălaj / Zalău / 25 / July / 1927 / Paucă A. / Paucă A. / BUC 268834
- Epipactis palustris (L.) Crantz** / *Epipactis / palustris* / (L.) Crantz / Romania / Bucovina / Suceava / Bosanci / 24 / June / 1954 / Morariu I. / Morariu I. / BUC 339939
- Epipactis palustris (L.) Crantz** / *Epipactis / palustris* / (L.) Crantz / Romania / Muntenia / Buzău / Ținteşti / 25 / June / 1953 / Paucă A. / Paucă A. / BUC 268026
- Epipactis palustris (L.) Crantz** / *Epipactis / palustris* / (L.) Crantz / Romania / Transilvania / Braşov / Săcele / Muntele Gîrbova / 1100m / meadow / 10 / June / 1967 / Lungu L. et Ruummele M. / Lungu L. et Ruummele M. / BUC 310714
- Epipactis palustris (L.) Crantz** / *Epipactis / palustris* / (L.) Crantz / Romania / Transilvania / Braşov / Săcele / Muntele Gîrbova / 1100m / meadow / 10 / June / 1967 / Lungu L. et Ruummele M. / Lungu L. et Ruummele M. / BUC 310715
- Epipactis palustris (L.) Crantz** / *Epipactis / palustris* / (L.) Crantz / Romania / Transilvania / Braşov / Săcele / Muntele Gîrbova / 1100m / meadow / 10 / June / 1967 / Lungu L. et Ruummele M. / Lungu L. et Ruummele M. / BUC 310716
- Epipactis palustris (L.) Crantz** / *Epipactis / palustris* / (L.) Crantz / Romania / Transilvania / Harghita / Bilbor / 7 / July / 1961 / Ştefureac Tr. et Cristurean I. / Ştefureac Tr. et Cristurean I. / BUC 410781
- Epipactis palustris (L.) Crantz** / *Epipactis / palustris* / (L.) Crantz / Romania / Transilvania / Harghita / Bilbor / 7 / July / 1961 / Ştefureac Tr. et Cristurean I. / Ştefureac Tr. et Cristurean I. / BUC 410782
- Epipactis palustris (L.) Crantz** / *Epipactis / palustris* / (Mill.) Crantz / Romania / Muntenia / Buzău / Ținteşti / 25 / June / 1953 / Paucă A. / Paucă A. / BUC 268022

- Epipactis palustris (L.) Crantz** / Epipactis / palustris / (Mill.) Crantz / Romania / Muntenia / Buzău / Ținteași / 25 / June / 1953 / Paucă A. / Paucă A. / BUC 268023
- Epipactis palustris (L.) Crantz** / Epipactis / palustris / (Mill.) Crantz / Romania / Muntenia / Buzău / Ținteași / 25 / June / 1953 / Paucă A. / Paucă A. / BUC 268024
- Epipactis palustris (L.) Crantz** / Epipactis / palustris / (Mill.) Crantz / Romania / Muntenia / Buzău / Ținteași / 25 / June / 1953 / Paucă A. / Paucă A. / BUC 268025
- Epipactis palustris (L.) Crantz** / Epipactis / palustris / (Mill.) Crantz / Romania / Muntenia / Dâmbovița / Butimanu / 12 / July / 1953 / Paucă A. / Paucă A. / BUC 268130
- Epipactis palustris (L.) Crantz** / Epipactis / palustris / (Mill.) Crantz / Romania / Muntenia / Vâlcea / Valea Babei / June / 1968 / Constantinescu M. / Constantinescu M. / BUC 285201
- Epipactis palustris (L.) Crantz** / Epipactis / palustris / (Mill.) Crantz / Romania / Muntenia / Vâlcea / Valea Babei / June / 1968 / Constantinescu M. / Constantinescu M. / BUC 285202
- Epipactis palustris (L.) Crantz** / Epipactis / palustris / (Mill.) Crantz / Romania / Muntenia / Vâlcea / Valea Babei / June / 1968 / Constantinescu M. / Constantinescu M. / BUC 285203
- Epipactis palustris (L.) Crantz** / Epipactis / palustris / (Mill.) Crantz / Romania / Muntenia / Vâlcea / Valea Babei / June / 1968 / Constantinescu M. / Constantinescu M. / BUC 285204
- Epipactis palustris (L.) Crantz** / Epipactis / palustris / (Mill.) Crantz / Romania / Muntenia / Vâlcea / Valea Babei / June / 1968 / Constantinescu M. / Constantinescu M. / BUC 285205
- Epipactis palustris (L.) Crantz** / Epipactis / palustris / (Mill.) Crantz / Romania / Paucă A. / Paucă A. / BUC 268838
- Epipactis purpurata subsp. purpurata** / Epipactis / sessilifolia / Peterm. / Romania / Muntenia / Pădurea Cernica / 21 / July / 1958 / Cristorean I. / Cristorean I. / BUC 410800
- Epipactis purpurata subsp. purpurata** / Epipactis / sessilifolia / Peterm. / Romania / Moldova / Neamț / Valea Balaurului / sub 500 m / forest / 3 / September / 1919 / Enculescu P. / Enculescu P. / Agrogeology Department Herbarium, Romanian Institute of Geology / BUC 182645
- Epipactis purpurata subsp. Purpurata** / Epipactis / varians / (Crantz) H.Fleischm. & Rech. / Romania / Oltenia / Mehedinți / Baia de Aramă / Valea Mare / 24 / July / 1952 / unknown / Paucă A. / BUC 268841
- Epipactis purpurata subsp. Purpurata** / Epipactis / varians / (Crantz) H.Fleischm. & Rech. / Romania / Oltenia / Mehedinți / Baia de Aramă / Valea Mare / 24 / July / 1952 / unknown / Paucă A. / BUC 268843
- Epipactis purpurata subsp. Purpurata** / Epipactis / varians / (Crantz) H.Fleischm. & Rech. / Romania / Transilvania / Târnava Mică / Bazna / 350 m / In fagetis et carpinetis versus N expositis prope balneas Bazna, solo humoso / 30 / July / 1940 / Borza Al. / Borza Al. / Flora Romaniae Exsiccata a Museo Botanico Universitatis Clusienensis Edita (Cluj) / BUC 209010
- Epipactis purpurata subsp. purpurata** / Epipactis / varians / Crantz / Romania / Banat / Caraș-Severin / Oravița / 26 / July / 1962 / unknown / unknown / BUC 410801
- Epipactis purpurata subsp. purpurata** / Epipactis / varians / H.Fleischm. & Rech. / Romania / Oltenia / Gorj / Valea Pârâului / 23 / July / 1951 / Paucă A. / Paucă A. / BUC 268839
- Epipactis purpurata subsp. purpurata** / Epipactis / varians / H.Fleischm. & Rech. / Romania / Oltenia / Gorj / Valea Pârâului / 23 / July / 1951 / Paucă A. / Paucă A. / BUC 268840
- Epipactis purpurata subsp. purpurata** / Epipactis / varians / H.Fleischm. & Rech. / Romania / Oltenia / Mehedinți / Baia de Aramă / Valea Mare / 24 / July / 1952 / unknown / Paucă A. / BUC 268842
- Epipactis purpurata subsp. purpurata** / Epipactis / varians / H.Fleischm. & Rech. / Romania / Transilvania / Trei Scaune / Zalău / 25 / July / 1927 / unknown / unknown / BUC 182646
- Epipactis purpurata subsp. purpurata** / Epipactis / varians / Romania / Hagieni / 6 / June / 1965 / Cristorean I. / Cristorean I. / BUC 410829
- Goodyera repens (L.) R.Br.** / Goodyera / repens / (L.) R.Br. / Romania / Lacul Negru / forest / 12 / July / 1934 / Enculescu P. / Morariu I. / BUC 182575
- Goodyera repens (L.) R.Br.** / Goodyera / repens / (L.) R.Br. / Romania / Lacul Negru / forest / 12 / July / 1934 / Enculescu P. / Morariu I. / BUC 182576
- Goodyera repens (L.) R.Br.** / Goodyera / repens / (L.) R.Br. / Romania / Lacul Negru / forest / 12 / July / 1934 / Enculescu P. / Morariu I. / BUC 182577
- Goodyera repens (L.) R.Br.** / Goodyera / repens / (L.) R.Br. / Romania / Lacul Negru / forest / 12 / July / 1934 / Enculescu P. / Morariu I. / BUC 182578
- Goodyera repens (L.) R.Br.** / Goodyera / repens / (L.) R.Br. / Romania / Lacul Negru / forest / 12 / July / 1934 / Enculescu P. / Morariu I. / BUC 182579
- Goodyera repens (L.) R.Br.** / Goodyera / repens / (L.) R.Br. / Romania / Lacul Negru / forest / 12 / July / 1934 / Enculescu P. / Morariu I. / BUC 182580

- Goodyera repens (L.) R.Br.** / Goodyera / repens / (L.) R.Br. / Romania / Lacul Negru / forest / 12 / July / 1934 / Enculescu P. / Morariu I. / BUC 182581
- Goodyera repens (L.) R.Br.** / Goodyera / repens / (L.) R.Br. / Romania / Lacul Negru / forest / 12 / July / 1934 / Enculescu P. / Morariu I. / BUC 182585
- Goodyera repens (L.) R.Br.** / Goodyera / repens / (L.) R.Br. / Romania / Lacul Negru / forest / 12 / July / 1934 / Enculescu P. / Morariu I. / BUC 182586
- Goodyera repens (L.) R.Br.** / Goodyera / repens / (L.) R.Br. / Romania / Lacul Negru / forest / 12 / July / 1934 / Enculescu P. / Morariu I. / BUC 182587
- Goodyera repens (L.) R.Br.** / Goodyera / repens / (L.) R.Br. / Romania / Lacul Negru / forest / 12 / July / 1934 / Enculescu P. / Morariu I. / BUC 182588
- Goodyera repens (L.) R.Br.** / Goodyera / repens / (L.) R.Br. / Romania / Lacul Negru / forest / 12 / July / 1934 / Enculescu P. / Morariu I. / BUC 182589
- Goodyera repens (L.) R.Br.** / Goodyera / repens / (L.) R.Br. / Romania / Lacul Negru / forest / 12 / July / 1934 / Enculescu P. / Morariu I. / BUC 182590
- Goodyera repens (L.) R.Br.** / Goodyera / repens / (L.) R.Br. / Romania / Maramureş / Maramureş / Fundul Tisei / 16 / July / 1934 / Enculescu P. / Morariu I. / BUC 182591
- Goodyera repens (L.) R.Br.** / Goodyera / repens / (L.) R.Br. / Romania / Maramureş / Maramureş / Fundul Tisei / 16 / July / 1934 / Enculescu P. / Morariu I. / BUC 182592
- Goodyera repens (L.) R.Br.** / Goodyera / repens / (L.) R.Br. / Romania / Maramureş / Maramureş / Fundul Tisei / 16 / July / 1934 / Enculescu P. / Morariu I. / BUC 182593
- Goodyera repens (L.) R.Br.** / Goodyera / repens / (L.) R.Br. / Romania / Maramureş / Maramureş / Fundul Tisei / 16 / July / 1934 / Enculescu P. / Morariu I. / BUC 182594
- Goodyera repens (L.) R.Br.** / Goodyera / repens / (L.) R.Br. / Romania / Maramureş / Maramureş / Fundul Tisei / 16 / July / 1934 / Enculescu P. / Morariu I. / BUC 182595
- Goodyera repens (L.) R.Br.** / Goodyera / repens / (L.) R.Br. / Romania / Maramureş / Maramureş / Fundul Tisei / 16 / July / 1934 / Enculescu P. / Morariu I. / BUC 182596
- Goodyera repens (L.) R.Br.** / Goodyera / repens / (L.) R.Br. / Romania / Maramureş / Maramureş / Fundul Tisei / 16 / July / 1934 / Enculescu P. / Morariu I. / BUC 182597
- Goodyera repens (L.) R.Br.** / Goodyera / repens / (L.) R.Br. / Romania / Maramureş / Maramureş / Izvoarele Tisei / forest / 24 / July / 1934 / Enculescu P. / Morariu I. / BUC 182569
- Goodyera repens (L.) R.Br.** / Goodyera / repens / (L.) R.Br. / Romania / Maramureş / Maramureş / Izvoarele Tisei / forest / 24 / July / 1934 / Enculescu P. / Morariu I. / BUC 182570
- Goodyera repens (L.) R.Br.** / Goodyera / repens / (L.) R.Br. / Romania / Maramureş / Maramureş / Izvoarele Tisei / forest / 24 / July / 1934 / Enculescu P. / Morariu I. / BUC 182571
- Goodyera repens (L.) R.Br.** / Goodyera / repens / (L.) R.Br. / Romania / Maramureş / Maramureş / Izvoarele Tisei / forest / 24 / July / 1934 / Enculescu P. / Morariu I. / BUC 182572
- Goodyera repens (L.) R.Br.** / Goodyera / repens / (L.) R.Br. / Romania / Maramureş / Maramureş / Izvoarele Tisei / forest / 24 / July / 1934 / Enculescu P. / Morariu I. / BUC 182573
- Goodyera repens (L.) R.Br.** / Goodyera / repens / (L.) R.Br. / Romania / Maramureş / Maramureş / Izvoarele Tisei / forest / 24 / July / 1934 / Enculescu P. / Morariu I. / BUC 182574
- Goodyera repens (L.) R.Br.** / Goodyera / repens / (L.) R.Br. / Romania / Maramureş / Maramureş / Izvoarele Tisei / forest / 24 / July / 1934 / Enculescu P. / Morariu I. / BUC 182582
- Goodyera repens (L.) R.Br.** / Goodyera / repens / (L.) R.Br. / Romania / Maramureş / Maramureş / Izvoarele Tisei / forest / 24 / July / 1934 / Enculescu P. / Morariu I. / BUC 182583
- Goodyera repens (L.) R.Br.** / Goodyera / repens / (L.) R.Br. / Romania / Maramureş / Maramureş / Izvoarele Tisei / forest / 24 / July / 1934 / Enculescu P. / Morariu I. / BUC 182584
- Goodyera repens (L.) R.Br.** / Goodyera / repens / (L.) R.Br. / Romania / Muntenia / Dâmboviţa / Scropoasa / Lacul Scropoasa / July / 1953 / Popescu A. et Lungu L. / Popescu A. et Lungu L. / BUC 410790
- Goodyera repens (L.) R.Br.** / Goodyera / repens / R.Br. / Romania / forest / 21 / July / 1934 / unknown / unknown / BUC 315969
- Goodyera repens (L.) R.Br.** / Goodyera / repens / R.Br. / Romania / forest / 21 / July / 1934 / unknown / unknown / BUC 315971
- Goodyera repens (L.) R.Br.** / Goodyera / repens / R.Br. / Romania / Moldova / Neamţ / Izvorul Muntelui / Munţii Ceahlău / coniferous forest, podzol soil / 1 / September / 1919 / Enculescu P. / Enculescu P. / Agrogeology Department Herbarium, Romanian Institute of Geology / BUC 315853
- Goodyera repens (L.) R.Br.** / Goodyera / repens / R.Br. / Romania / Moldova / Neamţ / Izvorul Muntelui / Munţii Ceahlău / coniferous forest, podzol soil / 1 / September / 1919 / Enculescu P. / Enculescu P. / BUC 315854

Goodyera repens (L.) R.Br. / Goodyera / repens / R.Br. / Romania / Moldova / Neamț / Izvorul Muntelui / Munții Ceahlău / coniferous forest, podzol soil / 1 / September / 1919 / Enculescu P. / Enculescu P. / BUC 315855

Goodyera repens (L.) R.Br. / Goodyera / repens / R.Br. / Romania / Moldova / Neamț / Izvorul Muntelui / Munții Ceahlău / coniferous forest, podzol soil / 1 / September / 1919 / Enculescu P. / Enculescu P. / BUC 315856

Goodyera repens (L.) R.Br. / Goodyera / repens / R.Br. / Romania / Moldova / Neamț / Izvorul Muntelui / Munții Ceahlău / coniferous forest, podzol soil / 1 / September / 1919 / Enculescu P. / Enculescu P. / BUC 315857

Goodyera repens (L.) R.Br. / Goodyera / repens / R.Br. / Romania / Moldova / Neamț / Izvorul Muntelui / Munții Ceahlău / coniferous forest, podzol soil / 1 / September / 1919 / Enculescu P. / Enculescu P. / BUC 315858

Goodyera repens (L.) R.Br. / Goodyera / repens / R.Br. / Romania / Moldova / Neamț / Izvorul Muntelui / Munții Ceahlău / coniferous forest, podzol soil / 1 / September / 1919 / Enculescu P. / Enculescu P. / BUC 315859

Goodyera repens (L.) R.Br. / Goodyera / repens / R.Br. / Romania / Moldova / Neamț / Izvorul Muntelui / Munții Ceahlău / coniferous forest, podzol soil / 1 / September / 1919 / Enculescu P. / Enculescu P. / BUC 315860

Goodyera repens (L.) R.Br. / Goodyera / repens / R.Br. / Romania / Muntenia / Buzău / Fundul Milei / 23 / July / 1934 / Paucă A. / Paucă A. / BUC 315970

Goodyera repens (L.) R.Br. / Goodyera / repens / R.Br. / Romania / Muntenia / Dâmbovița / Scropoasa / Cascada Șapte Izvoare, Munții Bucegi / forest / 21 / July / 1934 / unknown / unknown / BUC 315861

Goodyera repens (L.) R.Br. / Goodyera / repens / R.Br. / Romania / Muntenia / Dâmbovița / Scropoasa / Cascada Șapte Izvoare, Munții Bucegi / forest / 21 / July / 1934 / unknown / unknown / BUC 315862

Gymnadenia conopsea (L.) R.Br. / Gymnadenia / conopsea / (L.) R.Br. / Romania / 13 / August / 1958 / unknown / unknown / BUC 410839

Gymnadenia conopsea (L.) R.Br. / Gymnadenia / conopsea / (L.) R.Br. / Romania / Moldova / Suceava / Broșteni / 28-29 / July / 1963 / Cristurean I. et Popescu A. / Cristurean I. et Popescu A. / BUC 410848

Gymnadenia conopsea (L.) R.Br. / Gymnadenia / conopsea / (L.) R.Br. / Romania / Moldova / Suceava / Drăgoiasa / Tinovul Mare / 30 / July / 1963 / Cristurean I. / Cristurean I. / BUC 410845

Gymnadenia conopsea (L.) R.Br. / Gymnadenia / conopsea / (L.) R.Br. / Romania / Muntenia / Dâmbovița / Pietroșița / Valea Ialomitei / July / 1953 / Popescu A. et Lungu L. / Popescu A. et Lungu L. / BUC 410849

Gymnadenia conopsea (L.) R.Br. / Gymnadenia / conopsea / (L.) R.Br. / Romania / Muntenia / Prahova / Munții Bucegi, Vârful Caraiman / 15 / July / 1959 / Cristurean I. / Cristurean I. / BUC 410851

Gymnadenia conopsea (L.) R.Br. / Gymnadenia / conopsea / (L.) R.Br. / Romania / Muntenia / Prahova / Munții Bucegi / between the cave and Piatra Arsa / 21 / August / 1963 / unknown / unknown / BUC 410844

Gymnadenia conopsea (L.) R.Br. / Gymnadenia / conopsea / (L.) R.Br. / Romania / Muntenia / Prahova / Sinaia / 17 / May / 1958 / unknown / unknown / BUC 410822

Gymnadenia conopsea (L.) R.Br. / Gymnadenia / conopsea / (L.) R.Br. / Romania / Muntenia / Prahova / Sinaia / Vârful cu Dor / 21 / June / 1968 / Cristurean I. / Cristurean I. / BUC 410842

Gymnadenia conopsea (L.) R.Br. / Gymnadenia / conopsea / (L.) R.Br. / Romania / Transilvania / Harghita / Bilbor / 6 / July / 1961 / unknown / unknown / BUC 410847

Gymnadenia conopsea (L.) R.Br. / Gymnadenia / conopsea / (L.) R.Br. / Romania / Transilvania / Harghita / Bilbor / 8 / July / 1961 / Ștefureac Tr. et Cristurean I. / Ștefureac Tr. et Cristurean I. / BUC 410841

Gymnadenia conopsea (L.) R.Br. / Gymnadenia / conopsea / (L.) R.Br. / Romania / unknown / unknown / BUC 410850

Gymnadenia conopsea (L.) R.Br. / Gymnadenia / conopsea / (L.) R.Br. / Romania / Bucovina / Suceava / Păltinoasa / June / 1951 / Morariu I. / Morariu I. / BUC 344652

Gymnadenia conopsea (L.) R.Br. / Gymnadenia / conopsea / (L.) R.Br. / Romania / Bucovina / Suceava / Vatra Moldoviței / Poiana ovăsului / 1000m / 5 / June / 1990 / Lucescu T. / Lucescu T. / Flora Moldaviae et Dobrogeae Exsiccata A Horto Botanica Universitatis „Al. I. Cuza” Iasiensis Editam / BUC 373521

Gymnadenia conopsea (L.) R.Br. / *Gymnadenia* / conopsea / (L.) R.Br. / Romania / Crișana / Bihor / Tinăud / 325 m / meadow on a steep slope, regosol soil on sandy clays / 6 / June / 1968 / Neacșu M. / Neacșu M. / BUC 260934

Gymnadenia conopsea (L.) R.Br. / *Gymnadenia* / conopsea / (L.) R.Br. / Romania / Crișana / Bihor / Tinăud / 325 m / meadow on a steep slope, regosol soil on sandy clays / 6 / June / 1968 / Neacșu M. / Neacșu M. / BUC 410756

Gymnadenia conopsea (L.) R.Br. / *Gymnadenia* / conopsea / (L.) R.Br. / Romania / Muntenia / Prahova / Munții Bucegi, Vârful Bătrâna / 2000m / 20 / July / 1925 / Borza Al. / Borza Al. / BUC 249513

Gymnadenia conopsea (L.) R.Br. / *Gymnadenia* / conopsea / (L.) R.Br. / Romania / Muntenia / Prahova / Munții Bucegi, Vârful Caraiman / 4 / August / 1941 / Tarnavski I.T. / Tarnavski I.T. / BUC 342510

Gymnadenia conopsea (L.) R.Br. / *Gymnadenia* / conopsea / (L.) R.Br. / Romania / Muntenia / Prahova / Munții Ciucaș, Vârful Zăganu / meadow / 16 / July / 1959 / Mitroiu N. / Mitroiu N. / BUC 341743

Gymnadenia conopsea (L.) R.Br. / *Gymnadenia* / conopsea / (L.) R.Br. / Romania / Muntenia / Prahova / Ploiești / Valea lui Bogdan / 8 / June / 1967 / Lungu L. et Ruemmele M. / Lungu L. et Ruemmele M. / BUC 312818

Gymnadenia conopsea (L.) R.Br. / *Gymnadenia* / conopsea / (L.) R.Br. / Romania / Muntenia / Prahova / Ploiești / Valea lui Bogdan / 8 / June / 1967 / Lungu L. et Ruemmele M. / Lungu L. et Ruemmele M. / BUC 312819

Gymnadenia conopsea (L.) R.Br. / *Gymnadenia* / conopsea / (L.) R.Br. / Romania / Muntenia / Prahova / Sinaia / 14 / June / 1963 / Popescu M. / Popescu M. / BUC 285200

Gymnadenia conopsea (L.) R.Br. / *Gymnadenia* / conopsea / (L.) R.Br. / Romania / Muntenia / Prahova / Sinaia / 800m / meadow / 17 / June / 1987 / Buculei P. / Buculei P. / BUC 375357

Gymnadenia conopsea (L.) R.Br. / *Gymnadenia* / conopsea / (L.) R.Br. / Romania / Muntenia / Prahova / Sinaia / Poiana Caprii / 28 / June / 1956 / Rădulescu D. / Rădulescu D. / BUC 273452

Gymnadenia conopsea (L.) R.Br. / *Gymnadenia* / conopsea / (L.) R.Br. / Romania / Muntenia / Prahova / Sinaia / Poiana Cumpătul / 29 / June / 1956 / Rădulescu D. / Rădulescu D. / BUC 285174

Gymnadenia conopsea (L.) R.Br. / *Gymnadenia* / conopsea / (L.) R.Br. / Romania / Muntenia / Prahova / Sinaia / Poiana Stânei / 30 / June / 1958 / Mitroiu N. / Mitroiu N. / BUC 371816

Gymnadenia conopsea (L.) R.Br. / *Gymnadenia* / conopsea / (L.) R.Br. / Romania / Oltenia / Mehedinți / Baia de Aramă / 25 / May / 1953 / Paucă A. / Paucă A. / BUC 268128

Gymnadenia conopsea (L.) R.Br. / *Gymnadenia* / conopsea / (L.) R.Br. / Romania / Oltenia / Mehedinți / Baia de Aramă / 25 / May / 1953 / Paucă A. / Paucă A. / BUC 268129

Gymnadenia conopsea (L.) R.Br. / *Gymnadenia* / conopsea / (L.) R.Br. / Romania / Oltenia / Mehedinți / Baia de Aramă / 25 / May / 1953 / Paucă A. / Paucă A. / BUC 410758

Gymnadenia conopsea (L.) R.Br. / *Gymnadenia* / conopsea / (L.) R.Br. / Romania / Oltenia / Mehedinți / Gormentii NV / Muntele Ciolanul Mare / 44°55'59,60"N / 22°31'04,35"E / 1032 m / 4 / July / 2017 / Negrean G. / Negrean G. / Herbarium G. Negrean / BUC 410056

Gymnadenia conopsea (L.) R.Br. / *Gymnadenia* / conopsea / (L.) R.Br. / Romania / Transilvania / Brașov / Munții Piatra Craiului / 16 / June / 1967 / Ruemmele M. / Ruemmele M. / BUC 312817

Gymnadenia conopsea (L.) R.Br. / *Gymnadenia* / conopsea / (L.) R.Br. / Romania / Transilvania / Brașov / Munții Piatra Craiului / 900m / hayfield / 16 / June / 1967 / Ruemmele M. / Ruemmele M. / BUC 171870

Gymnadenia conopsea (L.) R.Br. / *Gymnadenia* / conopsea / (L.) R.Br. / Romania / Transilvania / Brașov / Munții Piatra Craiului / 900m / hayfield / 16 / June / 1967 / Ruemmele M. / Ruemmele M. / BUC 410757

Gymnadenia conopsea (L.) R.Br. / *Gymnadenia* / conopsea / (L.) R.Br. / Romania / Transilvania / Cluj / Feleacu / Dealul Feleacului / 22 / June / 1950 / Soran V. / Soran V. / BUC 176665

Gymnadenia conopsea (L.) R.Br. / *Gymnadenia* / conopsea / (L.) R.Br. / Romania / Transilvania / Munții Sebeșului / 9 / August / 1949 / Borza Al. / Borza Al. / BUC 285175

Gymnadenia conopsea (L.) R.Br. / *Gymnadenia* / conopsea / (L.) R.Br. / Romania / Transilvania / Munții Sebeșului / 9 / August / 1949 / Borza Al. / Borza Al. / BUC 285176

Gymnadenia conopsea (L.) R.Br. / *Gymnadenia* / conopsea / (L.) R.Br. / Romania / Transilvania / Munții Sebeșului / 9 / August / 1949 / Borza Al. / Borza Al. / BUC 285177

Gymnadenia conopsea (L.) R.Br. / *Gymnadenia* / conopsea / (L.) R.Br. / Romania / Transilvania / Munții Sebeșului / 9 / August / 1949 / Borza Al. / Borza Al. / BUC 285178

Gymnadenia conopsea (L.) R.Br. / *Gymnadenia* / conopsea / (L.) R.Br. / Romania / Transilvania / Năsăud / 800-900m / in rupibus „Piatra scrisă” supra pagum Cușma / 28 / June / 1924 / Borza Al. / Borza Al. / Flora Romaniae Exsiccata a Museo Botanico Universitatis Clusienensis Edita (Cluj) / BUC 182896

- Gymnadenia conopsea (L.) R.Br.** / *Gymnadenia* / *conopsea* / (L.) R.Br. / Romania / Transilvania / Sălaj / Sângeorgiul de Meseș / 47°03'20,69"N / 22°58'52,82"E / 611 m / in herbosis supra „Biserica Dracului” / 11 / July / 2016 / Negrean G. / Negrean G. / Herbarium G. Negrean / BUC 406791
- Gymnadenia conopsea (L.) R.Br.** / *Gymnadenia* / *conopsea* / (L.) R.Br. / Romania / Transilvania / Turda / Muntele Berchișului / 700m / 17 / June / 1923 / Borza Al. / Borza Al. / Flora Romaniae Exsiccata a Museo Botanico Universitatis Clusienensis Edita (Cluj) / BUC 182895
- Gymnadenia conopsea (L.) R.Br.** / *Gymnadenia* / *conopsea* / (L.) R.Br. / *typica* (Beck) / Romania / Muntenia / Buzău / Masivul Penteleu / 11 / July / 1933 / Enculescu P. / Enculescu P. / BUC 182546
- Gymnadenia conopsea (L.) R.Br.** / *Gymnadenia* / *conopsea* / R.Br. / Romania / 11 / July / 1934 / unknown / unknown / BUC 182547
- Gymnadenia conopsea (L.) R.Br.** / *Gymnadenia* / *conopsea* / R.Br. / Romania / Muntenia / Prahova / Sinaia / Poiana Stânei / 4 / July / 1968 / Iordan T. / Iordan T. / BUC 344471
- Gymnadenia conopsea (L.) R.Br.** / *Gymnadenia* / *conopsea* / R.Br. / Romania / Muntenia / Prahova / Sinaia / Poiana Stânei / podzol soil / June / 1907 / Enculescu P. / Enculescu P. / Agrogeology Department Herbarium, Romanian Institute of Geology / BUC 182659
- Gymnadenia conopsea (L.) R.Br.** / *Gymnadenia* / *conopsea* / R.Br. / Romania / Muntenia / Prahova / Sinaia / Poiana Stânei / podzol soil / June / 1907 / Enculescu P. / Enculescu P. / Agrogeology Department Herbarium, Romanian Institute of Geology / BUC 182660
- Gymnadenia conopsea (L.) R.Br.** / *Gymnadenia* / *conopsea* / R.Br. / Romania / Paucă A. / Paucă A. / BUC 268131
- Gymnadenia conopsea (L.) R.Br.** / *Gymnadenia* / *conopsea* / R.Br. / Romania / Paucă A. / Paucă A. / BUC 268132
- Gymnadenia conopsea (L.) R.Br.** / *Gymnadenia* / *conopsea* / R.Br. / Romania / Paucă A. / Paucă A. / BUC 268133
- Gymnadenia conopsea (L.) R.Br.** / *Gymnadenia* / *conopsea* / R.Br. / *typica* (Beck) / Romania / 1 / June / 1936 / unknown / unknown / BUC 182611
- Gymnadenia conopsea (L.) R.Br.** / *Gymnadenia* / *conopsea* / R.Br. / *typica* (Beck) / Romania / Moldova / Vrancea / Munții Furu / near Podul Grecilor / 4 / June / 1936 / Enculescu P. / Enculescu P. / BUC 182605
- Gymnadenia conopsea (L.) R.Br.** / *Gymnadenia* / *conopsea* / R.Br. / *typica* (Beck) / Romania / Muntenia / Buzău / Gura Milii / hayfield / 16 / June / 1934 / unknown / unknown / BUC 182610
- Gymnadenia conopsea (L.) R.Br.** / *Gymnadenia* / *conopsea* / Romania / Munții Bucegi / 16 / July / 1946 / Tarnavski I.T. / Tarnavski I.T. / BUC 283144
- Gymnadenia conopsea (L.) R.Br.** / *Orchis* / *conopsea* / L. / Romania / Muntenia / Buzău / Muntele Smoleanu / hayfield, podzol soil / 30 / June / 1903 / Enculescu P. / Enculescu P. / Agrogeology Department Herbarium, Romanian Institute of Geology / BUC 182638
- Gymnadenia miniata (Crantz) Hayek** / *Nigritella* / *rubra* / (Wettst.) K.Richt. / Romania / Muntenia / Prahova / Sinaia / Vârful cu Dor / 21 / June / 1968 / unknown / unknown / BUC 410837
- Gymnadenia miniata (Crantz) Hayek** / *Nigritella* / *rubra* / (Wettst.) Richt. / Romania / Munții Bucegi / 1250 m / alpine meadows / June / 1973 / unknown / unknown / BUC 371889
- Gymnadenia miniata (Crantz) Hayek** / *Nigritella* / *rubra* / Romania / Munții Bucegi / 1780 m / meadow, the cave near Cacova / 30 / June / 1943 / Tarnavski I.T. / Tarnavski I.T. / BUC 361187
- Gymnadenia nigra (L.) Rchb.f.** / *Nigritella* / *nigra* / (L.) Rchb. / Romania / Muntenia / Prahova / Munții Bucegi, Vârful Caraiman / 15 / July / 1959 / Cristorean I. / Cristorean I. / BUC 410779
- Gymnadenia nigra (L.) Rchb.f.** / *Nigritella* / *nigra* / (L.) Rchb. / Romania / Muntenia / Prahova / Munții Bucegi, Vârful Caraiman / Cristorean I. / Cristorean I. / BUC 410780
- Gymnadenia odoratissima (L.) Rich.** / *Gymnadenia* / *odoratissima* / Romania / Transilvania / Bistrița-Năsăud / Zagra / Coasta Podereiului / 27 / July / 1945 / Morariu I. / Morariu I. / BUC 209241
- Himantoglossum calcaratum subsp. rumelicum (H.Baumann & R.Lorenz) Niketić & / Himantoglossum / hircinum / Rich / Romania / Dobrogea / in silvis / July / 1912 / illegible / illegible / BUC 182668**
- Limodorum abortivum (L.) Sw.** / *Limodorum* / *abortivum* / (L.) Sw. / Romania / Mehedinți / illegible / podzol soil / 30 / May / 1913 / Enculescu P. / Enculescu P. / Agrogeology Department Herbarium, Romanian Institute of Geology / BUC 182665
- Limodorum abortivum (L.) Sw.** / *Limodorum* / *abortivum* / Sw. / Romania / Mehedinți / illegible / podzol soil / 30 / May / 1913 / Enculescu P. / Enculescu P. / Agrogeology Department Herbarium, Romanian Institute of Geology / BUC 182664
- Neotinea tridentata (Scop.) R.M.Bateman, Pridgeon & M.W.Chase** / *Orchis* / *tridentata* / Scop. / Romania / Dobrogea / Tulcea / Babadag / 24 / May / 1962 / Lungeanu I. / Lungeanu I. / BUC 374251

Neotinea tridentata (Scop.) R.M.Bateman, Pridgeon & M.W.Chase / Orchis / tridentata / Scop. / Romania / Dobrogea / Tulcea / Babadag / 24 / May / 1962 / Lungeanu I. / Lungeanu I. / BUC 374252

Neotinea tridentata (Scop.) R.M.Bateman, Pridgeon & M.W.Chase / Orchis / tridentata / Scop. / Romania / Transilvania / Cluj / Cluj-Napoca / Pădurea Hoiam / 520m / in declivibus graminosis siccis ultra silvam Hoiam prope opp. Cluj-Napoca / 17 / May / 1973 / Gergely I., Farcașiu V. et Lorinczi F. / Gergely I., Farcașiu V. et Lorinczi F. / Flora Romaniae Exsiccata A Herbario Universitatis Napocensis Edita / BUC 246940

Neotinea ustulata (L.) R.M.Bateman, Pridgeon & M.W.Chase / Neotinea / ustulata / (L.) R.M.Bateman, Pridgeon & M.W.Chase / ustulata / Romania / Transilvania / Sălaj / Sângeorgiul de Meseș / 47°03'20,69"N / 22°58'52,82"E / 611m / supra „Biserica Dracului”, in herbosis / 11 / July / 2016 / Negrean G. / Negrean G. / Herbarium G. Negrean / BUC 406225

Neotinea ustulata (L.) R.M.Bateman, Pridgeon & M.W.Chase / Orchis / ustulata / L. / Romania / Crișana / Bihor / Tinăud / 375 m / north-facing meadow, regosol soil on clay soils / 5 / July / 1968 / Neacșu M. / Neacșu M. / BUC 260924

Neotinea ustulata (L.) R.M.Bateman, Pridgeon & M.W.Chase / Orchis / ustulata / L. / Romania / Muntenia / Buzău / Gura Milii / 16 / June / 1934 / Enculescu P. / Enculescu P. / BUC 315507

Neotinea ustulata (L.) R.M.Bateman, Pridgeon & M.W.Chase / Orchis / ustulata / L. / Romania / Muntenia / Prahova / Câmpina / Voila station / 22 / July / 1957 / Mitroiu N. / Tarnavschi I.T. / BUC 271275

Neotinea ustulata (L.) R.M.Bateman, Pridgeon & M.W.Chase / Orchis / ustulata / L. / Romania / Munții Neamț / 16 / July / 1958 / unknown / unknown / BUC 285173

Neotinea ustulata (L.) R.M.Bateman, Pridgeon & M.W.Chase / Orchis / ustulata / L. / Romania / Oltenia / Gorj / Peștișani / forest, podzol soil / 31 / May / 1913 / Enculescu P. / Enculescu P. / Agrogeology Department Herbarium, Romanian Institute of Geology / BUC 182632

Neotinea ustulata (L.) R.M.Bateman, Pridgeon & M.W.Chase / Orchis / ustulata / L. / Romania / Paucă A. / Paucă A. / BUC 268017

Neotinea ustulata (L.) R.M.Bateman, Pridgeon & M.W.Chase / Orchis / ustulata / L. / Romania / Paucă A. / Paucă A. / BUC 268018

Neotinea ustulata (L.) R.M.Bateman, Pridgeon & M.W.Chase / Orchis / ustulata / L. / Romania / Topești / 25 / June / 1953 / Paucă A. / Paucă A. / BUC 268019

Neotinea ustulata (L.) R.M.Bateman, Pridgeon & M.W.Chase / Orchis / ustulata / L. / Romania / Topești / 25 / June / 1953 / Paucă A. / Paucă A. / BUC 268020

Neotinea ustulata (L.) R.M.Bateman, Pridgeon & M.W.Chase / Orchis / ustulata / L. / Romania / Topești / 25 / June / 1953 / Paucă A. / Paucă A. / BUC 268021

Neottia cordata (L.) Rich. / Listera / cordata / (L.) R.Br. / Romania / Banat / Severin / Muntele Baicu / 1750 m / ad „Stâna din Ciungi la Iezer”, in piceto inter muscos / 21 / July / 1943 / Boșcaiu N. / Boșcaiu N. / Flora Romaniae Exsiccata a Museo Botanico Universitatis Clusienensis (Timisoara) Edita / BUC 180809

Neottia cordata (L.) Rich. / Listera / cordata / (L.) R.Br. / Romania / Maramureș / Maramureș / Borșa / 1051-1286 m / in silvis ad pag. Borșa, loco „Botca Bretiliei” dicto. / 8 / June / 1945 / Coman A. / Coman A. / Flora Romaniae Exsiccata a Museo Botanico Universitatis Clusienensis Edita (Cluj) / BUC 180808

Neottia cordata (L.) Rich. / Listera / cordata / (L.) R.Br. / Romania / Maramureș / Maramureș / Fundul Tisei / July / 1935 / Enculescu P. / Morariu I. / BUC 182567

Neottia cordata (L.) Rich. / Listera / cordata / (L.) R.Br. / Romania / Moldova / Vrancea / Munții Furu / near Podul Grecilor / 4 / June / 1936 / Enculescu P. / Morariu I. / BUC 182568

Neottia cordata (L.) Rich. / Listera / cordata / (L.) R.Br. / Romania / Muntenia / Dâmbovița / Scropoasa / Lacul Scropoasa / Lungu L. et Popescu A. / Lungu L. et Popescu A. / BUC 410825

Neottia cordata (L.) Rich. / Listera / cordata / (L.) R.Br. / Romania / Oltenia / Gorj / Muntele Râncea / 1500 m / spruce forest / 8 / August / 1967 / Zaharia C. I. / Zaharia C. I. / BUC 175773

Neottia cordata (L.) Rich. / Listera / cordata / Romania / Muntenia / Dâmbovița / Scropoasa / Lacul Scropoasa / July / 1953 / Lungu L. et Popescu A. / Lungu L. et Popescu A. / BUC 410826

Neottia nidus-avis (L.) Rich. / Neottia / nidus-avis / (L.) L. C. Rich. / Romania / Crișana / Bihor / Vadu Crișului / 475 m / hornbeam forest on a northern slope, yellow-brown podzolic clay-alluvial soil / 12 / May / 1967 / Neacșu M. / Neacșu M. / BUC 260923

Neottia nidus-avis (L.) Rich. / Neottia / nidus-avis / (L.) L. C. Rich. / Romania / Crișana / Bihor / Vadu Crișului / 475 m / hornbeam forest on a northern slope, yellow-brown podzolic clay-alluvial soil / 12 / May / 1967 / Neacșu M. / Neacșu M. / BUC 410760

Neottia nidus-avis (L.) Rich. / Neottia / nidus-avis / (L.) Rich. / Romania / Moldova / Neamț / Bicaz / 26 / June / 1960 / Țicleanu N. / Țicleanu N. / BUC 182038

- Neottia nidus-avis (L.) Rich.** / Neottia / nidus-avis / (L.) Rich. / Romania / Muntenia / Prahova / Munții Ciucaș, Valea Berii / left affluent of the Valea Berii / 3 / July / 1959 / Șerbănescu G. / Șerbănescu et Mitroiu N. / BUC 315932
- Neottia nidus-avis (L.) Rich.** / Neottia / nidus-avis / (L.) Rich. / Romania / Oltenia / Munții Lăpățina / spruce forest / July / 1978 / Nedelcu G. / Nedelcu G. / BUC 285598
- Neottia nidus-avis (L.) Rich.** / Neottia / nidus-avis / (L.) Rich. / Romania / Transilvania / Cluj / Cluj / Pădurea Făget / 550 m / in silva supra fontem „Sf. Ioan” / 21 et 8 / May et June / 1939 / Ghișa E. / Ghișa E. / Flora Romaniae Exsiccata a Museo Botanico Universitatis Clusienis Edita (Cluj) / BUC 180086
- Neottia nidus-avis (L.) Rich.** / Neottia / nidus-avis / L. / Romania / Muntenia / București / Băneasa / 1945 / unknown / unknown / BUC 319954
- Neottia nidus-avis (L.) Rich.** / Neottia / nidus-avis / Rich. / Romania / Muntenia / Dâmbovița / Izvoarele / 350 m / hill, podzol soil / 20 / May / 1906 / Enculescu P. / Enculescu P. / Agrogeology Department Herbarium, Romanian Institute of Geology / BUC 182661
- Neottia nidus-avis (L.) Rich.** / Neottia / nidus-avis / Rich. / Romania / Muntenia / Ilfov / Periș / in the forest, podzolic soil / 27 / April / 1910 / Enculescu P. / Enculescu P. / Agrogeology Department Herbarium, Romanian Institute of Geology / BUC 182663
- Neottia nidus-avis (L.) Rich.** / Neottia / nidus-avis / Rich. / Romania / Muntenia / Prahova / Sinaia / forest / 12 / June / 1956 / Salmen H. / Salmen H. / BUC 316595
- Neottia nidus-avis (L.) Rich.** / Neottia / nidus-avis / Rich. / Romania / Muntenia / Prahova / west of Plopeni station, in the forest, podzol soil / 17 / May / 1913 / Enculescu P. / Enculescu P. / Agrogeology Department Herbarium, Romanian Institute of Geology / BUC 182662
- Neottia nidus-avis (L.) Rich.** / Neottia / nidus-avis / Rich. / Romania / Oltenia / Munții Lăpățina / spruce forest / August / 1979 / Nedelcu G. / Nedelcu G. / BUC 410759
- Neottia ovata (L.) Hartm.** / Listera / ovata / (L.) R.Br. / Moldova / Basarabia / Lăpușna / 25 m / in silva umbrosa-humidaque Querceto-Ulmeti „Strășeni” dicta, prope pag. Cojușna / 7 / June / 1937 / Arvat A. / Arvat A. / Flora Romaniae Exsiccata a Museo Botanico Universitatis Clusienis Edita (Cluj) / BUC 180810
- Neottia ovata (L.) Hartm.** / Listera / ovata / (L.) R.Br. / Romania / 14 / August / 1959 / Ștefureac Tr. et Cristurean I. / Ștefureac Tr. et Cristurean I. / BUC 410833
- Neottia ovata (L.) Hartm.** / Listera / ovata / (L.) R.Br. / Romania / 15 / July / unknown / unknown / BUC 410838
- Neottia ovata (L.) Hartm.** / Listera / ovata / (L.) R.Br. / Romania / illegible / 24 / May / 1963 / Popescu A. / Popescu A. / BUC 410771
- Neottia ovata (L.) Hartm.** / Listera / ovata / (L.) R.Br. / Romania / illegible / 24 / May / 1963 / Popescu A. / Popescu A. / BUC 410772
- Neottia ovata (L.) Hartm.** / Listera / ovata / (L.) R.Br. / Romania / Moldova / Iași / Curagău / forest, hill, podzol soil / 29 / May / 1917 / Enculescu P. / Enculescu P. / Agrogeology Department Herbarium, Romanian Institute of Geology / BUC 182654
- Neottia ovata (L.) Hartm.** / Listera / ovata / (L.) R.Br. / Romania / Moldova / Neamț / Bicaz / 25 / June / 1959 / unknown / unknown / BUC 319544
- Neottia ovata (L.) Hartm.** / Listera / ovata / (L.) R.Br. / Romania / Moldova / Suceava / Drăgoiasa / 21 / August / 1950 / Ștefureac Tr. et Cristurean I. / Ștefureac Tr. et Cristurean I. / BUC 410832
- Neottia ovata (L.) Hartm.** / Listera / ovata / (L.) R.Br. / Romania / Muntenia / Argeș / Muntele Cumpăna / 4 / June / 1924 / Borza Al. / Borza Al. / BUC 249512
- Neottia ovata (L.) Hartm.** / Listera / ovata / (L.) R.Br. / Romania / Muntenia / Ilfov / Cernica / de unde stiati ca e Listera ca in scan nu apare / 5 / May / 1950 / Ștefureac Tr., Enculescu P. et Lungu L. / Ștefureac Tr., Enculescu P. et Lungu L. / BUC 410802
- Neottia ovata (L.) Hartm.** / Listera / ovata / (L.) R.Br. / Romania / Muntenia / Prahova / Malul Șipei / 22 / July / 1971 / illegible / illegible / BUC 410773
- Neottia ovata (L.) Hartm.** / Listera / ovata / (L.) R.Br. / Romania / Muntenia / Prahova / Malul Șipei / 22 / July / 1971 / unknown / unknown / BUC 410774
- Neottia ovata (L.) Hartm.** / Listera / ovata / (L.) R.Br. / Romania / Muntenia / Prahova / Sinaia / Poiana Caprii / 28 / June / 1956 / Rădulescu D. / Rădulescu D. / BUC 273490
- Neottia ovata (L.) Hartm.** / Listera / ovata / (L.) R.Br. / Romania / Muntenia / Prahova / Sinaia / Poiana Șarînga / 19 / July / 1971 / illegible / illegible / BUC 410824
- Neottia ovata (L.) Hartm.** / Listera / ovata / (L.) R.Br. / Romania / Muntenia / Prahova / Sinaia / Vârful cu Dor / 21 / June / 1968 / Cristurean I. / Cristurean I. / BUC 410784
- Neottia ovata (L.) Hartm.** / Listera / ovata / (L.) R.Br. / Romania / Oltenia / Vâlcea / Brezoi / Valea Lotrului / 21 / July / 1955 / Ștefureac Tr., Lungu L. et Popescu A. / Ștefureac Tr., Lungu L. et Popescu A. / BUC 410765

- Neottia ovata (L.) Hartm.** / *Listera* / ovata / (L.) R.Br. / Romania / Transilvania / Braşov / Zărneşti / 900m / hayfield / 16 / June / 1967 / Ruemmele M. et Silvia / Ruemmele M. / BUC 171871
- Neottia ovata (L.) Hartm.** / *Listera* / ovata / (L.) R.Br. / Romania / Transilvania / Braşov / Zărneşti / 900m / hayfield / 16 / June / 1967 / Ruemmele M. et Silvia / Ruemmele M. / BUC 171872
- Neottia ovata (L.) Hartm.** / *Listera* / ovata / (L.) R.Br. / Romania / Transilvania / Harghita / Bilbor / 16 / August / 1960 / Ştefureac Tr. et Cristurean I. / Ştefureac Tr. et Cristurean I. / BUC 410830
- Neottia ovata (L.) Hartm.** / *Listera* / ovata / (L.) R.Br. / Romania / Transilvania / Harghita / Bilbor / 7 / July / 1961 / unknown / unknown / BUC 410768
- Neottia ovata (L.) Hartm.** / *Listera* / ovata / (L.) R.Br. / Romania / Transilvania / Harghita / Bilbor / 7 / July / 1961 / unknown / unknown / BUC 410769
- Neottia ovata (L.) Hartm.** / *Listera* / ovata / (L.) R.Br. / Romania / Transilvania / Harghita / Bilbor / 7 / July / 1961 / unknown / unknown / BUC 410770
- Neottia ovata (L.) Hartm.** / *Listera* / ovata / (L.) R.Br. / Romania / Transilvania / Harghita / Bilbor / July / 1961 / Ştefureac Tr. et Cristurean I. / Ştefureac Tr. et Cristurean I. / BUC 410831
- Neottia ovata (L.) Hartm.** / *Listera* / ovata / L. / Romania / 28 / June / 1911 / Enculescu P. / Enculescu P. / BUC 182657
- Neottia ovata (L.) Hartm.** / *Listera* / ovata / L. / Romania / Muntenia / Argeş / Găeşti / the forest near Stravopolia / 14 / May / 1963 / unknown / unknown / BUC 263890
- Neottia ovata (L.) Hartm.** / *Listera* / ovata / R.Br. / Romania / Muntenia / Ilfov / Periş / forest, podzolic soil / 22 / May / 1905 / Enculescu P. / Enculescu P. / Agrogeology Department Herbarium, Romanian Institute of Geology / BUC 182656
- Neottia ovata (L.) Hartm.** / *Listera* / ovata / R.Br. / Romania / Muntenia / Prahova / Sinaia / Poiana Stânei / podzolic soil / June / 1907 / Enculescu P. / Enculescu P. / Agrogeology Department Herbarium, Romanian Institute of Geology / BUC 182655
- Neottia ovata (L.) Hartm.** / *Listera* / ovata / Romania / 28 / June / 1911 / Enculescu P. / Enculescu P. / BUC 182658
- Neottia ovata (L.) Hartm.** / *Listera* / ovata / Romania / Bucovina / Suceava / Gura Humorului / forest / 27 / May / 1950 / Morariu I. / Morariu I. / BUC 311865
- Neottia ovata (L.) Hartm.** / *Listera* / ovata / Romania / Transilvania / Braşov / Timişul de Jos / 4 / June / 1955 / Lungu L. / Lungu L. / BUC 410767
- Neottia ovata (L.) Hartm.** / *Listera* / ovata / Romania / Transilvania / Harghita / Bilbor / 16 / August / 1960 / Ştefureac Tr. et Cristurean I. / Ştefureac Tr. et Cristurean I. / BUC 410766
- Neottia ovata (L.) Hartm.** / *Listera* / ovata / stenoglossa (Peterm) / Romania / 1 / June / 1936 / Enculescu P. / Enculescu P. / BUC 182555
- Neottia ovata (L.) Hartm.** / *Listera* / ovata / stenoglossa (Peterm) / Romania / 1 / June / 1936 / Enculescu P. / Enculescu P. / BUC 182556
- Ophrys holosericea subsp. holosericea** / *Ophrys* / fuciflora / (F.W.Schmidt) Moench / Romania / Crişana / Bihor / Tinăud / Terasa Crişului Repede / 47°03'10,34"N / 23°27'59,02"E / 268 m / meadow / 6 / May / 2017 / Negrean G. / Negrean G. / Herbarium G. Negrean / BUC 407460
- Ophrys sphegodes Mill.** / *Ophrys* / sphegodes / Mill. / Romania / Crişana / Bihor / Tinăud / Terasa Crişului Repede / 47°03'10,34"N / 23°27'59,02"E / 268 m / meadow / 6 / May / 2017 / Negrean G. / Negrean G. / Herbarium G. Negrean / BUC 407461
- Ophrys x minuticauda Duffort** / *Ophrys* / x minuticauda / Duffort / Romania / Muntenia / Prahova / Parcul Natural Bucegi / 5 / May / 2021 / Nora E. Angheliescu / Nora E. Angheliescu / BUC 410378 / *Ophrys apiferax* *Ophrys scolopax* subsp. *cornuta*
- Ophrys x minuticauda Duffort** / *Ophrys* / x minuticauda / Duffort / Romania / Muntenia / Prahova / Parcul Natural Bucegi / 5 / May 2021 / Nora E. Angheliescu / Nora E. Angheliescu / BUC4 10379 / *Ophrys apiferax* *Ophrys scolopax* subsp. *cornuta*
- Orchis cornuta v. banatica** / *Orchis* / cornuta / Stev. / banatica (Rchb.) / Romania / Banat / Caraş-Severin / Ciudanoviţa / xeromesophilic grasslands / 5 / May / 1966 / illegible / illegible / Herbarium of the Natural Monuments Subcommittee, Academy of the Socialist Republic of Romania, Scientific Research Base Timişoara / BUC 176832
- Orchis cornuta v. banatica** / *Orchis* / cornuta / Stev. / banatica (Rchb.) / Romania / Oltenia / Mehedinţi / Malovăţ / hill, colluvial soil / 29 / May / 1913 / Enculescu P. / Enculescu P. / Agrogeology Department Herbarium, Romanian Institute of Geology / BUC 182636
- Orchis cornuta v. banatica** / *Orchis* / cornuta / Stev. / banatica (Rchb.) / Romania / Oltenia / Mehedinţi / Malovăţ / hill, colluvial soil / 29 / May / 1913 / Enculescu P. / Enculescu P. / Agrogeology Department Herbarium, Romanian Institute of Geology / BUC 182637

- Orchis mascula subsp. speciosa (Mutel) Hegi** / *Orchis* / *mascula* / L. / *signifera* (Vest) Soó / Romania / Banat / Timiș / Banloc / 90m / in querceto-carpineto ad pag. Banloc, solo humoso / 20 / April / 1948 / Borza Al. / Borza Al. / Flora Romaniae Exsiccata A Herbario Universitatis Napocensis Edita / BUC 271270
- Orchis mascula subsp. speciosa (Mutel) Hegi** / *Orchis* / *mascula* / L. / *signifera* (Vest) Soó / Romania / Banat / Timiș / Banloc / 90m / in querceto-carpineto ad pag. Banloc, solo humoso / 20 / April / 1948 / Borza Al. / Borza Al. / Flora Romaniae Exsiccata A Herbario Universitatis Napocensis Edita / BUC 271271
- Orchis mascula subsp. speciosa (Mutel) Hegi** / *Orchis* / *mascula* / L. / *signifera* (Vest) Soó / Romania / Banat / Timiș / Banloc / 90m / in querceto-carpineto ad pag. Banloc, solo humoso / 20 / April / 1948 / Borza Al. / Borza Al. / Flora Romaniae Exsiccata A Herbario Universitatis Napocensis Edita / BUC 271272
- Orchis mascula subsp. speciosa (Mutel) Hegi** / *Orchis* / *mascula* / L. / *speciosa* Host (Koch.) / Romania / Banat / Timiș / Banloc / elm and oak forests / 29 / April / 1948 / Borza Al. / Borza Al. / BUC 249508
- Orchis mascula subsp. speciosa (Mutel) Hegi** / *Orchis* / *signifer* / (Vest) Soo. / Romania / Cîmpulung / hayfield, under the hill / 24 / May / 1951 / Morariu I. / Morariu I. / BUC 306177
- Orchis mascula subsp. speciosa (Mutel) Hegi** / *Orchis* / *signifer* / (Vest) Soo. / Romania / Cîmpulung / hayfield, under the hill / 24 / May / 1951 / Morariu I. / Morariu I. / BUC 306178
- Orchis mascula subsp. speciosa (Mutel) Hegi** / *Orchis* / *signifer* / (Vest) Soo. / Romania / Cîmpulung / hayfield, under the hill / 24 / May / 1951 / Morariu I. / Morariu I. / BUC 306179
- Orchis mascula subsp. speciosa (Mutel) Hegi** / *Orchis* / *speciosa* / Host / Romania / Banat / Caraș-Severin / Anina / Valea Carașului / 19 / May / 1942 / Morariu I. / Morariu I. / BUC 209233
- Orchis mascula subsp. speciosa (Mutel) Hegi** / *Orchis* / *speciosa* / Host / Romania / Muntenia / Prahova / Munții Ciucaș, Valea Berii / 28 / June / 1956 / Salmen H. / Salmen H. / BUC 315641
- Orchis mascula subsp. speciosa (Mutel) Hegi** / *Orchis* / *speciosa* / Host / Romania / Muntenia / Prahova / Munții Ciucaș, Valea Berii / 28 / June / 1956 / Salmen H. / Salmen H. / BUC 315642
- Orchis mascula subsp. speciosa (Mutel) Hegi** / *Orchis* / *speciosa* / Host / Romania / Transilvania / Brașov / Săcele / Munții Gîrbova, Rențea / 1200m / meadow / 10 / June / 1967 / Lungu L. et Ruemmele M. / Lungu L. et Ruemmele M. / BUC 310720
- Orchis mascula subsp. speciosa (Mutel) Hegi** / *Orchis* / *speciosa* / L. / Romania / Muntenia / Prahova / Munții Ciucaș, Valea Berii / 1000m / wet meadow / 19 / June / 1966 / Ruemmele M. / Klohs D. / BUC 171880
- Orchis mascula subsp. speciosa (Mutel) Hegi** / *Orchis* / *speciosa* / Romania / Muntenia / Prahova / Sinaia / Poiana Republicii / 6 / August / 1957 / Rădulescu D. / Rădulescu D. / BUC 271274
- Orchis mascula subsp. speciosa (Mutel) Hegi** / *Orchis* / *speciosa* / Romania / Muntenia / Prahova / Sinaia / Poiana Republicii / 6 / June / 1957 / Rădulescu D. / Rădulescu D. / BUC 271273
- Orchis mascula subsp. speciosa (Mutel) Hegi** / *Orchis* / *speciosa* / Romania / Muntenia / Prahova / Sinaia / Poiana Republicii / 6 / June / 1957 / Rădulescu D. / Rădulescu D. / BUC 273148
- Orchis militaris L.** / *Orchis* / *militaris* / L. / Romania / Crișana / Bihor / Tinăud / Terasa Crișului Repede / 47°03'10,34"N / 23°27'59,02"E / 268m / meadow / 6 / May / 2017 / Negrean G. / Negrean G. / Herbarium G. Negrean / BUC 407462
- Orchis militaris L.** / *Orchis* / *militaris* / L. / Romania / Crișana / Bihor / Tinăud / Terasa Crișului Repede / 47°03'10,34"N / 23°27'59,02"E / 268m / meadow / 6 / May / 2017 / Negrean G. / Negrean G. / Herbarium G. Negrean / BUC 409532
- Orchis militaris L.** / *Orchis* / *militaris* / L. / Romania / Oltenia / Mehedinți / Jupânești SE / Podișul Mehedinți / 44°49'46,64"N / 22°33'59,78"E / 459m / prope basilica / 18 / May / 2013 / Negrean G. / Negrean G. / Herbarium G. Negrean / BUC 402939
- Orchis militaris L.** / *Orchis* / *militaris* / L. / *typicus* (Beck) / Romania / Vârful Curse / 1 / June / 1936 / Enculescu P. / Enculescu P. / BUC 182606
- Orchis militaris L.** / *Orchis* / *militaris* / L. / *typicus* (Beck) / Romania / Vârful Curse / 1 / June / 1936 / Enculescu P. / Enculescu P. / BUC 182607
- Orchis militaris L.** / *Orchis* / *militaris* / Romania / Muntenia / Prahova / Sinaia / Poiana Stânei / podzol soil / June / 1907 / Enculescu P. / Enculescu P. / Agrogeology Department Herbarium, Romanian Institute of Geology / BUC 182630
- Orchis militaris subsp. militaris** / *Orchis* / *militaris* / L. / *stenoloba* (Döll) / Romania / Banat / Caraș-Severin / Anina / Valea Carașului / 19 / May / 1942 / Morariu I. / Morariu I. / BUC 209164

Orchis purpurea Huds. / *Orchis* / *purpurea* / Huds. / Romania / Crișana / Bihor / Topa de Criș / 375m / *Quercus cerris* forest, on a steep southern slope, regosol soil / 14 / May / 1967 / Neacșu M. / Neacșu M. / BUC 260929

Orchis purpurea Huds. / *Orchis* / *purpurea* / Huds. / Romania / Dobrogea / Constanța / Albești / Pădurea Hagieni / 43°47'44"N / 28°27'01"E / 45m / 28 / April / 2002 / Anastasiu P. / Negrean G. et Paulina Anastasiu / BUC 410762

Orchis purpurea Huds. / *Orchis* / *purpurea* / Huds. / Romania / Hobița / 29 / May / 1952 / Paucă A. / Paucă A. / BUC 268852

Orchis purpurea Huds. / *Orchis* / *purpurea* / Huds. / Romania / illegible / 7 / June / 1959 / unknown / unknown / BUC 319540

Orchis purpurea Huds. / *Orchis* / *purpurea* / Huds. / Romania / Muntenia / Argeș / Găești / 4 / May / 1959 / unknown / unknown / BUC 314444

Orchis purpurea Huds. / *Orchis* / *purpurea* / Huds. / Romania / Muntenia / Argeș / Găești / 4 / May / 1959 / unknown / unknown / BUC 314445

Orchis purpurea Huds. / *Orchis* / *purpurea* / Huds. / Romania / Oltenia / Gorj / Telești / the forest within 2 km of Telești-Birmici / 27 / May / 1913 / Paucă A. / Paucă A. / BUC 268853

Orchis purpurea Huds. / *Orchis* / *purpurea* / Huds. / Romania / Oltenia / Mehedinți / Strehaia / 19 / May / 1956 / unknown / unknown / BUC 263477

Orchis purpurea Huds. / *Orchis* / *purpurea* / Huds. / Romania / Oltenia / Mehedinți / Strehaia / 19 / May / 1956 / unknown / unknown / BUC 263478

Orchis purpurea subsp. purpurea / *Orchis* / *purpurea* / Huds. / *purpurea* / Romania / Crișana / Bihor / Tinăud / Terasa Crișului Repede / 47°03'10,34"N / 23°27'59,02"E / 268m / meadow / 6 / May / 2017 / Negrean G. / Negrean G. / Herbarium G. Negrean / BUC 407463

Orchis simia Lam. / *Orchis* / *simia* / Lam. / Romania / Banat / Caraș-Severin / Valea Beifului Sec / xerothermophilous shrubs / 20 / May / 1967 / illegible / illegible / Herbarium of the Natural Monuments Subcommission, Academy of the Socialist Republic of Romania, Scientific Research Base Timișoara / BUC 176833

Orchis simia Lam. / *Orchis* / *simia* / Lam. / Romania / Banat / Caraș-Severin / Vîrciorova / V. Slătinic / near the stream / 2 / May / 1966 / Negrean G. / Negrean G. / BUC 171741

Orchis simia Lam. / *Orchis* / *simia* / Lam. / Romania / Dobrogea / Constanța / Albești / Pădurea Hagieni / 43°47'44"N / 28°27'01"E / 45m / 28 / April / 2002 / Anastasiu P. / Negrean G. et Paulina Anastasiu / BUC 410763

Orchis x angusticuris Franch. / *Orchis* / *x angusticuris* / Franch. / Romania / Dobrogea / Tulcea / Pădurea Babadag / 10 / April / 2018 / Nora E. Anghelescu / Nora E. Anghelescu / BUC 410380 / *Orchis purpurea* x *Orchis simia*

Orchis x angusticuris Franch. / *Orchis* / *x angusticuris* / Franch. / Romania / Dobrogea / Tulcea / Pădurea Babadag / 10 / April / 2018 / Nora E. Anghelescu / Nora E. Anghelescu / BUC 410381 / *Orchis purpurea* x *Orchis simia*

Orchis x loreziana Brügger nothosubsp. kisslingii (Beck) Potucek / *Orchis* / *x loreziana* / Brügger / nothosubsp. *kisslingii* (Beck) Potucek / Romania / Transilvania / Hunedoara / Private property / 5 / May / 2021 / Nora E. Anghelescu / Nora E. Anghelescu / BUC 410382 / *Orchis masculasubsp. speciosa* x *Orchis pallens*

Orchis x loreziana Brügger nothosubsp. kisslingii (Beck) Potucek / *Orchis* / *x loreziana* / Brügger / nothosubsp. *kisslingii* (Beck) Potucek / Romania / Transilvania / Hunedoara / Private property / 5 / May / 2021 / Nora E. Anghelescu / Nora E. Anghelescu / BUC 410383 / *Orchis masculasubsp. speciosa* x *Orchis pallens*

Platanthera bifolia (L.) Rich. / *Orchis* / *bifolia* / L. / Romania / illegible / 4 / June / 1911 / unknown / unknown / BUC 182648

Platanthera bifolia (L.) Rich. / *Platanthera* / *bifolia* / (L.) L. C. Rich. / Romania / Crișana / Bihor / Borod / 450 m / oak forest on a southern slope, yellow-brown podzolic clay-alluvial soil / 8 / June / 1967 / Neacșu M. / Neacșu M. / BUC 260925

Platanthera bifolia (L.) Rich. / *Platanthera* / *bifolia* / (L.) Rich. / Romania / 28 / May / 1953 / Paucă A. / Paucă A. / BUC 268031

Platanthera bifolia (L.) Rich. / *Platanthera* / *bifolia* / (L.) Rich. / Romania / 28 / May / 1953 / Paucă A. / Paucă A. / BUC 268032

Platanthera bifolia (L.) Rich. / *Platanthera* / *bifolia* / (L.) Rich. / Romania / 28 / May / 1953 / Paucă A. / Paucă A. / BUC 268033

Platanthera bifolia (L.) Rich. / *Platanthera* / *bifolia* / (L.) Rich. / Romania / 28 / May / 1953 / Paucă A. / Paucă A. / BUC 268035

- Platanthera bifolia (L.) Rich.** / *Platanthera / bifolia / (L.) Rich.* / Romania / 28 / May / 1953 / Paucă A. / Paucă A. / BUC 268036
- Platanthera bifolia (L.) Rich.** / *Platanthera / bifolia / (L.) Rich.* / Romania / Banat / 17 / May / 1948 / unknown / unknown / BUC 310299
- Platanthera bifolia (L.) Rich.** / *Platanthera / bifolia / (L.) Rich.* / Romania / Crișana / Bihor / Borod / 450 m / oak forest on a southern slope, yellow-brown podzolic clay-alluvial soil / 8 / June / 1967 / Neacșu M. / Neacșu M. / BUC 410761
- Platanthera bifolia (L.) Rich.** / *Platanthera / bifolia / (L.) Rich.* / Romania / Muntenia / Buzău / Muntele Viforîta, Munții Buzăului / 800m / forest edge, humid / 6 / July / 1962 / Ruemmele M. / Ruemmele M. / BUC 284350
- Platanthera bifolia (L.) Rich.** / *Platanthera / bifolia / (L.) Rich.* / Romania / Muntenia / Buzău / Muntele Viforîta, Munții Buzăului / forest edge, humid / 6 / July / 1962 / Ruemmele M. / Ruemmele M. / BUC 171878
- Platanthera bifolia (L.) Rich.** / *Platanthera / bifolia / (L.) Rich.* / Romania / Muntenia / Buzău / Munții Buzăului, Culmea Viforita / 6 / July / 1962 / Ruemmele M. / Ruemmele M. / BUC 310751
- Platanthera bifolia (L.) Rich.** / *Platanthera / bifolia / (L.) Rich.* / Romania / Muntenia / Dâmbovița / illegible / 21 / May / 1932 / Cretzoiu P. / Cretzoiu P. / BUC 175329
- Platanthera bifolia (L.) Rich.** / *Platanthera / bifolia / (L.) Rich.* / Romania / Transilvania / Brașov / Munții Piatra Craiului / 16 / June / 1967 / Ruemmele M. / Ruemmele M. / BUC 284343
- Platanthera bifolia (L.) Rich.** / *Platanthera / bifolia / (L.) Rich.* / Romania / Transilvania / Brașov / Munții Piatra Craiului / 16 / June / 1967 / Ruemmele M. / Ruemmele M. / BUC 284344
- Platanthera bifolia (L.) Rich.** / *Platanthera / bifolia / (L.) Rich.* / Romania / Transilvania / Brașov / Munții Piatra Craiului / 16 / June / 1967 / Ruemmele M. / Ruemmele M. / BUC 284345
- Platanthera bifolia (L.) Rich.** / *Platanthera / bifolia / (L.) Rich.* / Romania / Transilvania / Brașov / Munții Piatra Craiului / 16 / June / 1967 / Ruemmele M. / Ruemmele M. / BUC 284346
- Platanthera bifolia (L.) Rich.** / *Platanthera / bifolia / (L.) Rich.* / Romania / Transilvania / Brașov / Munții Piatra Craiului / 16 / June / 1967 / Ruemmele M. / Ruemmele M. / BUC 284347
- Platanthera bifolia (L.) Rich.** / *Platanthera / bifolia / (L.) Rich.* / Romania / Transilvania / Brașov / Munții Piatra Craiului / 16 / June / 1967 / Ruemmele M. / Ruemmele M. / BUC 284348
- Platanthera bifolia (L.) Rich.** / *Platanthera / bifolia / L.* / Romania / Banat / 17 / May / 1948 / Borza Al. / Borza Al. / BUC 310300
- Platanthera bifolia (L.) Rich.** / *Platanthera / bifolia / Rich.* / Hungary / Bereg / June / 1909 / Ardos F. / Ardos F. / BUC 316664
- Platanthera bifolia (L.) Rich.** / *Platanthera / bifolia / Rich.* / Hungary / Sopron / 20 / April / 1901 / Ardos F. / Ardos F. / BUC 316663
- Platanthera bifolia (L.) Rich.** / *Platanthera / bifolia / Rich.* / Hungary / Sopron / 20 / April / 1901 / Ardos F. / Ardos F. / BUC 319874
- Platanthera bifolia (L.) Rich.** / *Platanthera / bifolia / Rich.* / Hungary / Sopron / 24 / April / 1901 / Ardos F. / Ardos F. / BUC 319875
- Platanthera bifolia (L.) Rich.** / *Platanthera / bifolia / Rich.* / Romania / Moldova / Iași / Comarna / Pădurea Curmătura / beech forest, podzol soil / 24 / May / 1917 / Enculescu P. / Enculescu P. / Agrogeology Department Herbarium, Romanian Institute of Geology / BUC 182647
- Platanthera bifolia (L.) Rich.** / *Platanthera / bifolia / Rich.* / Romania / Muntenia / Ilfov / Periș / forest, podzolic soil / 11 / May / 1903 / Enculescu P. / Enculescu P. / Agrogeology Department Herbarium, Romanian Institute of Geology / BUC 182652
- Platanthera bifolia (L.) Rich.** / *Platanthera / bifolia / Rich.* / Romania / Muntenia / Ilfov / Periș / peste 100m / plain, forest soil / 22 / May / 1910 / Enculescu P. / Enculescu P. / Agrogeology Department Herbarium, Romanian Institute of Geology / BUC 182651
- Platanthera bifolia (L.) Rich.** / *Platanthera / bifolia / Rich.* / Romania / Muntenia / Ilfov / Snagov / 5 / June / 1944 / Gușuleac / Gușuleac / BUC 285169
- Platanthera bifolia (L.) Rich.** / *Platanthera / bifolia / Rich.* / Romania / Muntenia / Ilfov / Snagov / 5 / June / 1944 / Gușuleac / Gușuleac / BUC 285170
- Platanthera bifolia (L.) Rich.** / *Platanthera / bifolia / Rich.* / Romania / Muntenia / Prahova / Plopeni / south of Plopeni station, in the forest, podzol soil / 17 / May / 1913 / Enculescu P. / Enculescu P. / Agrogeology Department Herbarium, Romanian Institute of Geology / BUC 182653
- Platanthera bifolia (L.) Rich.** / *Platanthera / bifolia / Romania* / 28 / May / 1953 / Paucă A. / Paucă A. / BUC 268034

Platanthera chlorantha (Custer) Rchb. / *Platanthera / chlorantha / (Custer) Rchb. / Romania / Moldova / Iași / Dealul Repede / 14 / July / 1958 / Ștefureac Tr. et Cristurean I. / Ștefureac Tr. et Cristurean I. / BUC 410794*

Platanthera chlorantha (Custer) Rchb. / *Platanthera / chlorantha / (Custer) Rchb. / Romania / Moldova / Iași / Dealul Repede / 14 / July / 1958 / Ștefureac Tr. et Cristurean I. / Ștefureac Tr. et Cristurean I. / BUC 410795*

× **Pseudadenia schweinfurthii (Hegelm. Ex A. Kern.) P. F. Hunt** / × *Pseudadenia / schweinfurthii / (Hegelm. Ex A. Kern.) P. F. Hunt / Romania / Transilvania / Harghita / Mădăraș / 20 / June / 2023 / Nora E. Anghelescu / Nora E. Anghelescu / BUC 410384 / Gymnadenia conopsea × Pseudorchis albida subsp. tricuspis*

× **Pseudadenia schweinfurthii (Hegelm. Ex A. Kern.) P. F. Hunt** / × *Pseudadenia / schweinfurthii / (Hegelm. Ex A. Kern.) P. F. Hunt / Romania / Transilvania / Harghita / Mădăraș / 20 / June / 2023 / Nora E. Anghelescu / Nora E. Anghelescu / BUC 410385 / Gymnadenia conopsea × Pseudorchis albida subsp. tricuspis*

× **Pseudadenia vitosana (H. Baumann) O. Gerbaud et W. Schmid** / × *Pseudadenia / vitosana / (H. Baumann) O. Gerbaud et W. Schmid / Romania / Transilvania / Harghita / Mădăraș / 20 / June / 2022 / Nora E. Anghelescu / Nora E. Anghelescu / BUC 410386 / Gymnadenia frivaldii × Pseudorchis albida subsp. tricuspis*

× **Pseudadenia vitosana (H. Baumann) O. Gerbaud et W. Schmid** / × *Pseudadenia / vitosana / (H. Baumann) O. Gerbaud et W. Schmid / Romania / Transilvania / Harghita / Mădăraș / 20 / June / 2022 / Nora E. Anghelescu / Nora E. Anghelescu / BUC 410387 / Gymnadenia frivaldii × Pseudorchis albida subsp. tricuspis*

× **Pseudorhiza nieschalkii (Senghas) P. F. Hunt nothosubsp. siculorum H. Kertész et N. Anghelescu** / × *Pseudorhiza / nieschalkii / (Senghas) P. F. Hunt / nothosubsp. siculorum H. Kertész et N. Anghelescu / Romania / Transilvania / Harghita / Mădăraș / Vârful Harghita / 30 / June / 2020 / Nora E. Anghelescu / Nora E. Anghelescu / BUC 410358 / Dactylorhiza fuchsii subsp. soana × Pseudorchis albida subsp. tricuspis*

× **Pseudorhiza nieschalkii (Senghas) P. F. Hunt nothosubsp. siculorum H. Kertész et N. Anghelescu** / × *Pseudorhiza / nieschalkii / (Senghas) P. F. Hunt / nothosubsp. siculorum H. Kertész et N. Anghelescu / Romania / Transilvania / Harghita / Mădăraș / Vârful Harghita / 30 / June / 2020 / Nora E. Anghelescu / Nora E. Anghelescu / BUC 410388 / Dactylorhiza fuchsii subsp. soana × Pseudorchis albida subsp. tricuspis*

× **Pseudorhiza nieschalkii (Senghas) P. F. Hunt nothosubsp. siculorum H. Kertész et N. Anghelescu** / × *Pseudorhiza / nieschalkii / (Senghas) P. F. Hunt / nothosubsp. siculorum H. Kertész et N. Anghelescu / Romania / Transilvania / Harghita / Mădăraș / Vârful Harghita / 30 / June / 2020 / Nora E. Anghelescu / Nora E. Anghelescu / BUC 410389 / Dactylorhiza fuchsii subsp. soana × Pseudorchis albida subsp. tricuspis*

Pseudorchis albida (L.) Á.Löve & D.Löve / *Gymnadenia / albida / (L.) Rich. / Romania / Muntenia / Buzău / Masivul Penteleu / 2 / August / 1932 / unknown / unknown / BUC 182531*

Pseudorchis albida (L.) Á.Löve & D.Löve / *Gymnadenia / albida / (L.) Rich. / Romania / Muntenia / Dâmbovița / Runcu / Valea Ialomicioarei / 16-17 / July / 1959 / Cristurean I. / Cristurean I. / BUC 410823*

Pseudorchis albida (L.) Á.Löve & D.Löve / *Gymnadenia / albida / (L.) Rich. / Romania / Oltenia / Vâlcea / Brezoi / Valea Lotrului / 24 / July / 1955 / Ștefureac Tr., Lungu L. et Popescu A. / Ștefureac Tr., Lungu L. et Popescu A. / BUC 410840*

Pseudorchis albida (L.) Á.Löve & D.Löve / *Gymnadenia / albida / (L.) Rich. / Romania / Oltenia / Vâlcea / Brezoi / Valea Lotrului / 8 / July / 1956 / unknown / unknown / BUC 410846*

Pseudorchis albida (L.) Á.Löve & D.Löve / *Gymnadenia / albida / (L.) Rich. / Romania / Transilvania / Harghita / Lacul Roșu / hill / 14 / July / 1933 / unknown / unknown / BUC 182532*

Pseudorchis albida (L.) Á.Löve & D.Löve / *Gymnadenia / albida / Romania / Moldova / Suceava / Drăgoiasa / 19 / August / 1959 / Ștefureac Tr. et Cristurean I. / Ștefureac Tr. et Cristurean I. / BUC 410843*

Pseudorchis albida (L.) Á.Löve & D.Löve / *Leucorchis / albida / (L.) E.Mey. / Romania / Muntenia / Prahova / Munții Bucegi, Vârful Caraiman / the path towards the cross / 4 / August / 1941 / Tarnavschi I.T. / Tarnavschi I.T. / BUC 342412*

Pseudorchis albida (L.) Á.Löve & D.Löve / *Leucorchis / albida / (L.) E.Mey. / Romania / Muntenia / Prahova / Munții Bucegi, Vârful Caraiman / the path towards the cross / 4 / August / 1941 / Tarnavschi I.T. / Tarnavschi I.T. / BUC 342413*

Pseudorchis albida (L.) Á.Löve & D.Löve / *Leucorchis / albida / (L.) E.Mey. / Romania / Muntenia / Prahova / Munții Bucegi, Vârful Caraiman / the path towards the cross / 4 / August / 1941 / Tarnavschi I.T. / Tarnavschi I.T. / BUC 342414*

- Pseudorchis albida (L.) Á.Löve & D.Löve** / Leucorchis / albida / (L.) E.Mey. / Romania / Muntenia / Prahova / Munții Bucegi, Vârful Caraiman / the path towards the cross / 4 / August / 1941 / Tarnavski I.T. / Tarnavski I.T. / BUC 342415
- Pseudorchis albida (L.) Á.Löve & D.Löve** / Leucorchis / albida / (L.) E.Mey. / Romania / Muntenia / Prahova / Râul Cacova / 1600m / 18 / July / 1925 / Borza Al. / Borza Al. / BUC 249561
- Pseudorchis albida (L.) Á.Löve & D.Löve** / Leucorchis / albida / (L.) E.Mey. / Romania / Transilvania / Alba / Carpații Meridionali / 1800m / Șurianul Lake bog / 21 / July / 1950 / Borza Al. / Borza Al. / BUC 249560
- Pseudorchis albida (L.) Á.Löve & D.Löve** / Leucorchis / albida / (L.) E.Mey. / Romania / Transilvania / Turda / Muntele Băișoara / 1200m / 10 / June / 1950 / Trețiu Tr. / Trețiu Tr. / BUC 176663
- Pseudorchis albida (L.) Á.Löve & D.Löve** / Leucorchis / albida / Romania / Muntenia / Prahova / Sinaia / 2000m / Cota 2000 / 28 / June / 2002 / Boicu L. S. / Boicu L. S. / BUC 364747
- Spiranthes spiralis (L.) Chevall.** / Spiranthes / spiralis / (L.) C. Koch. / Romania / Crișana / Satu Mare / Carei / 11 / August / 1966 / unknown / unknown / BUC 263895
- Spiranthes spiralis (L.) Chevall.** / Spiranthes / spiralis / (L.) C. Koch. / Romania / Crișana / Satu Mare / Carei / 11 / August / 1966 / unknown / unknown / BUC 263896
- Spiranthes spiralis (L.) Chevall.** / Spiranthes / spiralis / (L.) C. Koch. / Romania / Crișana / Satu Mare / Carei / 11 / August / 1966 / unknown / unknown / BUC 263897
- Spiranthes spiralis (L.) Chevall.** / Spiranthes / spiralis / (L.) C. Koch. / Romania / Maramureș / swamp / 10 / August / 1966 / unknown / unknown / BUC 263892
- Spiranthes spiralis (L.) Chevall.** / Spiranthes / spiralis / (L.) C. Koch. / Romania / Maramureș / swamp / 10 / August / 1966 / unknown / unknown / BUC 263893
- Spiranthes spiralis (L.) Chevall.** / Spiranthes / spiralis / (L.) C. Koch. / Romania / Maramureș / swamp / 10 / August / 1966 / unknown / unknown / BUC 263894
- Spiranthes spiralis (L.) Chevall.** / Spiranthes / spiralis / (L.) C. Koch. / Romania / Oltenia / Gorj / Tămărești / In meadows and shrubs / 20 / September / 1967 / Ularu P. / Ularu P. / Pedagogical Institute Brașov Herbarium / BUC 171780
- Spiranthes spiralis (L.) Chevall.** / Spiranthes / spiralis / (L.) Chevall. / United Kingdom / South West England / Cornwall / Lizard Peninsular / Cliff tops / 16-23 / August / 1961 / Martin A. et Gibbs P.E. / Martin A. et Gibbs P.E. / Herb. Univ. Liverpool. / BUC 170760
- Traunsteinera globosa (L.) Rchb.** / Orchis / globosa / L. / Romania / 21 / June / 1958 / Țicleanu N. / Țicleanu N. / BUC 182037
- Traunsteinera globosa (L.) Rchb.** / Orchis / globosa / L. / Romania / 9 / July / 1967 / unknown / unknown / BUC 322513
- Traunsteinera globosa (L.) Rchb.** / Orchis / globosa / L. / Romania / Muntenia / Buzău / Gura Milii / 16 / June / 1934 / Enculescu P. / Enculescu P. / BUC 182544
- Traunsteinera globosa (L.) Rchb.** / Orchis / globosa / L. / Romania / Muntenia / Prahova / Sinaia / 13 / June / 1956 / Salmen H. / Salmen H. / BUC 315640
- Traunsteinera globosa (L.) Rchb.** / Orchis / globosa / L. / Romania / Muntenia / Prahova / Sinaia / above the reservation with Aninis / 2 / July / 1956 / Rădulescu D. / Rădulescu D. / BUC 271267
- Traunsteinera globosa (L.) Rchb.** / Orchis / globosa / L. / Romania / Muntenia / Prahova / Sinaia / Munții Gîrbova, Rența / 1200m / in pasenis subalpinis / 10 / June / 1967 / Ruemmele M. / Ruemmele M. / BUC 284299
- Traunsteinera globosa (L.) Rchb.** / Orchis / globosa / L. / Romania / Muntenia / Prahova / Sinaia / Poiana Caprii / 28 / June / 1956 / Rădulescu D. / Rădulescu D. / BUC 273145
- Traunsteinera globosa (L.) Rchb.** / Orchis / globosa / L. / Romania / Muntenia / Prahova / Sinaia / Poiana Stânei / podzol soil / June / 1907 / Enculescu P. / Enculescu P. / Agrogeology Department Herbarium, Romanian Institute of Geology / BUC 182616
- Traunsteinera globosa (L.) Rchb.** / Orchis / globosa / L. / Romania / Transilvania / Brașov / Săcele / Munții Gîrbova, Rența / 1200m / meadow / 10 / June / 1967 / Lungu L. et Ruemmele M. / Lungu L. et Ruemmele M. / BUC 312883
- Traunsteinera globosa (L.) Rchb.** / Orchis / globosa / L. / Romania / Transilvania / Brașov / Săcele / Munții Gîrbova, Rența / 1200m / meadow / 10 / June / 1967 / Lungu L. et Ruemmele M. / Lungu L. et Ruemmele M. / BUC 312884
- Traunsteinera globosa (L.) Rchb.** / Orchis / globosus / L. / Romania / Muntenia / Prahova / Sinaia / Munții Gîrbova, Rența / 1200m / in pasenis subalpinis / 10 / June / 1967 / Ruemmele M. / Ruemmele M. / BUC 284300

Traunsteinera globosa (L.) Rchb. / Orchis / globosus / L. / Romania / Muntenia / Prahova / Sinaia / Munții Gîrbova, Rența / 1200m / in pasenis subalpinis / 10 / June / 1967 / Ruemmele M. / Ruemmele M. / BUC 284301

Traunsteinera globosa (L.) Rchb. / Traunsteinera / globosa / (L.) Rchb. / Romania / 1 / June / 1936 / Enculescu P. / Morariu I. / BUC 182557

Traunsteinera globosa (L.) Rchb. / Traunsteinera / globosa / (L.) Rchb. / Romania / 1 / June / 1936 / Enculescu P. / Morariu I. / BUC 182558

Traunsteinera globosa (L.) Rchb. / Traunsteinera / globosa / (L.) Rchb. / Romania / Moldova / Suceava / 1400 m / in montibus dictis „Rarău! / 3 / July / 1973 / Țopa E., Marin E. et Diaconescu F. / Țopa E., Marin E. et Diaconescu F. / Flora Moldaviae et Dobrogeae Exsiccata A Horto Botanica Universitatis „Al. I. Cuza” Iassiensis Editam / BUC 373237

Appendix 2 List of valid names of orchid's taxa and their number of specimens from BUC Herbarium

Valid name / Number of specimens		Valid name / Number of specimens	
Anacamptis coriophora (L.) R.M.Bateman, Pridgeon & M.W.Chase	37	Goodyera repens (L.) R.Br.	43
Anacamptis morio (L.) R.M.Bateman, Pridgeon & M.W.Chase	32	Gymnadenia conopsea (L.) R.Br.	53
Anacamptis palustris (Jacq.) R.M.Bateman, Pridgeon & M.W.Chase	14	Gymnadenia miniata (Crantz) Hayek	3
Anacamptis palustris subsp. elegans (Heuff.) R.M.Bateman, Pridgeon & M.W.Chase	11	Gymnadenia nigra (L.) Rchb.f.	2
Anacamptis palustris (Jacq.) R.M.Bateman, Pridgeon & M.W.Chase subsp. palustris	1	Gymnadenia odoratissima (L.) Rich.	1
Anacamptis papilionacea (L.) R.M.Bateman, Pridgeon & M.W.Chase	1	Himantoglossum calcaratum subsp. rumelicum (H.Baumann & R.Lorenz) Niketić &	1
Anacamptis × menosii (Chr. Bernard et G. Fabre) H. Kretzschmar, Eccarius et H. Dietr.	2	Limodorum abortivum (L.) Sw.	2
Cephalanthera damasonium (Mill.) Druce	6	Neotinea tridentata (Scop.) R.M.Bateman, Pridgeon & M.W.Chase	3
Cephalanthera longifolia (L.) Fritsch	17	Neotinea ustulata (L.) R.M.Bateman, Pridgeon & M.W.Chase	11
Cephalanthera rubra (L.) Rich.	11	Neottia cordata (L.) Rich.	7
Corallorhiza trifida Châtel.	2	Neottia nidus-avis (L.) Rich.	12
Cypripedium calceolus L.	1	Neottia ovata (L.) Hartm.	33
× Dactyloдения illyrica (Hartmut Jahn et Kämpel) P.Delforge nothosubsp. siculorum L. Balogh et Mih. Balogh, N. Angheliescu, N. Kigyossy	2	Ophrys holosericea (Burm.f.) Greuter subsp. holosericea	1
× Dactyloдения lebrunii (E. G. Camus) Peitz	2	Ophrys sphegodes Mill.	1
× Dactyloдения sinaiensis N. Kigyossy, N. Angheliescu, L. Balogh et Mih. Balogh	2	Ophrys × minuticauda Duffort	2
Dactylorhiza incarnata (L.) Soó	4	Orchis cornuta v. banatica	3
Dactylorhiza incarnata (L.) Soó subsp. incarnata	10	Orchis mascula subsp. speciosa (Mutel) Hegi	15
Dactylorhiza maculata (L.) Soó	35	Orchis militaris L.	6
Dactylorhiza maculata subsp. fuchsii (Druce) Hyl.	1	Orchis militaris L. subsp. militaris	1
Dactylorhiza maculata subsp. saccifera (Brongn.)	1	Orchis purpurea Huds.	9

Valid name / Number of specimens		Valid name / Number of specimens	
Diklic			
Dactylorhiza majalis subsp. cordigera (Fr.) H.Sund.	10	Orchis purpurea Huds. subsp. purpurea	1
Dactylorhiza sambucina (L.) Soó	14	Orchis simia Lam.	3
Dactylorhiza viridis (L.) R.M.Bateman, Pridgeon & M.W.Chase	23	Orchis × angusticruris Franch.	2
Dactylorhiza × ruppertii (M. Schulze) Borsos et Soó	2	Orchis × loreziana Brügger nothosubsp. kisslingii (Beck) Potucek	2
Dactylorhiza × ruppertii f. rubra (M. Schulze) Borsos et Soó	2	Platanthera bifolia (L.) Rich.	31
Epipactis atrorubens (Hoffm.) Besser	7	Platanthera chlorantha (Custer) Rchb.	2
Epipactis bucegensis N. Anghelescu, L. Balogh et Mih. Balogh	4	Pseudorchis albida (L.) Á.Löve & D.Löve	14
Epipactis helleborine (L.) Crantz subsp. helleborine	19	Spiranthes spiralis (L.) Chevall.	8
Epipactis leptochila (Godfery) Godfery subsp. leptochila	1	Traunsteinera globosa (L.) Rchb.	15
Epipactis microphylla (Ehrh.) Sw.	5	× Pseudadenia schweinfurthii (Hegelm. Ex A. Kern.) P. F. Hunt	2
Epipactis palustris (L.) Crantz	18	× Pseudadenia vitosana (H. Baumann) O. Gerbaud et W. Schmid	2
Epipactis purpurata Sm. subsp. purpurata	11	× Pseudorhiza nieschalkii (Senghas) P. F. Hunt nothosubsp. sicularum H. Kertész et N. Anghelescu	3

Appendix 3 List of collectors and the corresponding number of orchid's specimens from BUC Herbarium

Collectors / Number of specimens		Collectors / Number of specimens	
unknown	103	Lungu L. et Popescu A.	2
indecipherable	10	Lungu L. et Ruemmele M.	11
Anastasiu P.	6	Martin A. et Gibbs P.E.	1
Anghelescu Nora E.	29	Mitroiu N.	4
Ardos F.	4	Morariu I.	14
Arvat A.	1	Neacșu M.	13
Ball P.W., Brummitt R.K., Cook C.D.K., Gibbs P.E.	1	Nedelcu G.	2
Boicu L. S.	1	Negrean G.	14
Borza Al.	28	Negrean G., Brădeanu A.	1
Boșcaiu N.	1	Nyarady E. I.	1
Botnariuc I.	2	Ourică D. C.	1

Collectors / Number of specimens	Collectors / Number of specimens	Collectors / Number of specimens	Collectors / Number of specimens
Brădeanu A. et Negrean G	1	Paucă A.	59
Brăiteanu M.	1	Păun M.	4
Buculei P.	3	Petrescu C. et Răvăruț M.	2
Buia Al. et Cîrțu D.	2	Popescu A.	4
Burduja C. et Răvăruț M.	1	Popescu A. et Lungu L.	6
Burduja C., Diaconescu F., Rugină R., Todorescu G., Toniuc A. et Coman A.	1	Popescu A., Ionescu et Cristurean I.	2
Coman A.	1	Popescu M.	2
Constantinescu M.	5	Pușcariu Evd. Et Alexan M.	1
Cosma C.	1	Rădulescu D.	15
Cretzoiu P.	1	Rema N et Șt.	1
Cristurean I.	17	Ruemmele M.	20
Cristurean I. et Popescu A.	1	Ruemmele M. et Silvia	3
Diaconescu V.	4	Salmen H.	7
Enculescu P.	114	Schuman J.	1
Făgăraș M.	1	Soran V.	1
Forstner S.	2	Șerbănescu G.	3
Gergely I., Farcașiu V. et Lorinczi F.	1	Ștefănuță P.	2
Ghișa E.	1	Ștefureac Tr. et Cristurean I.	16
Grițescu G. P.	1	Ștefureac Tr., Enculescu P. et Lungu L.	1
Groza U.	2	Ștefureac Tr., Lungu L. et Popescu A.	2
Gușuleac	2	Tarnavschi I.T	10
Heltmann H.	3	Tarnavschi I.T et. Tatamir N.	2
Iordan T.	3	Trețiu Tr.	2
Linton W.R.	1	Țicleanu N.	2
Lucescu T.	1	Țopa E., Marin E. et Diaconescu F.	1
Lungeanu I.	3	Ularu P.	3
Lungu L.	4	Zaharia C. I.	2

Appendix 4 List of Exsiccata/Herbaria and the corresponding number of orchid's specimens from BUC Herbarium

Herbaria / Number of specimens		Exsiccata/ Number of specimens	
Herbarium G. Negrean	15	“Flora Olteniae Exsiccata” Hortus Botanicus Institutii Agronomici „T. Vladimirescu” Craiova-Republica Socialistă România	6
The Geological Committee's Herbarium	1	Flora Moldaviae et Dobrogeae Exsiccata A Horto Botanica Universitatis „Al. I. Cuza” Iassiensis Editam	3
Herbarium H. Heltmann	4	Flora Romaniae Exsiccata A Herbario Universitatis Napocensis Edita	5
Pedagogical Institute Braşov Herbarium	3	Flora Romaniae Exsiccata a Museo Botanico Universitatis Clusienensis (Timisoara) Edita	2
Faculty of Silviculture Herbarium, Politehnica University of Bucharest	1	Flora Romaniae Exsiccata a Museo Botanico Universitatis Clusienensis Edita (Cluj)	16
Agrogeology Department Herbarium, Romanian Institute of Geology	46	Herb. Univ. Liverpool.	3
Herbarium of the Natural Monuments Subcommission, Academy of the Socialist Republic of Romania, Scientific Research Base Timișoara	3		
“Ovidius” University Constanța Herbarium	1		

Appendix 5 Conservation status classification of the Orchidaceae specimens from BUC Herbarium

Valid Name (POWO, 2024)	Oltean et al. 1994	Boşcaiu et al. 1994	Dihoru & Dihoru 1993-1994	Dihoru & Negrea n 2009	IUCN Global	IUCN European	Habitats Directive
Anacamptis coriophora (L.) R.M.Bateman, Pridgeon & M.W.Chase	R				LC		
Anacamptis morio (L.) R.M.Bateman, Pridgeon & M.W.Chase	R					NT	
Anacamptis palustris (Jacq.) R.M.Bateman, Pridgeon & M.W.Chase	R				LC		
Anacamptis palustris subsp. elegans (Heuff.) R.M.Bateman et al.	R						
Anacamptis palustris Anacamptis palustris (Jacq.) R.M.Bateman, Pridgeon & M.W.Chase subsp. palustris							
Anacamptis papilionacea (L.) R.M.Bateman, Pridgeon & M.W.Chase	R		V	LR		LC	
Anacamptis × menosii (Chr. Bernard et G. Fabre) H. Kretzschmar, Eccarius et H. Dietr.							
Cephalanthera damasonium (Mill.) Druce	nt					LC	
Cephalanthera longifolia (L.) Fritsch	nt					LC	
Cephalanthera rubra (L.) Rich.	R					LC	
Corallorhiza trifida Châtel.	R					LC	
Cypripedium calceolus L.	V/R	E	V		LC	NT	Annex I
× Dactyloдения illyrica (Hartmut Jahn et Kümpel) P.Delforge nothosubsp. siculorum L. Balogh et Mih. Balogh, N. Angheliescu, N. Kigyosy							
× Dactyloдения lebrunii (E. G. Camus) Peitz							
× Dactyloдения sinaiensis N. Kigyosy, N. Angheliescu, L. Balogh et Mih. Balogh							
Dactylorhiza incarnata (L.) Soó	R					LC	
Dactylorhiza incarnata (L.) Soó subsp. incarnata			V				
Dactylorhiza maculata (L.) Soó	R					LC	
Dactylorhiza maculata subsp. fuchsii (Druce) Hyl.	R					LC	
Dactylorhiza maculata subsp. saccifera (Brongn.) Diklic							

Valid Name (POWO, 2024)	Oltean et al. 1994	Boşcaiu et al. 1994	Dihoru & Dihoru 1993-1994	Dihoru & Negrea n 2009	IUCN Global	IUCN European	Habitats Directive
<i>Dactylorhiza majalis</i> subsp. <i>cordigera</i> (Fr.) H.Sund.							
<i>Dactylorhiza sambucina</i> (L.) Soó	R				LC	LC	
<i>Dactylorhiza viridis</i> (L.) R.M.Bateman, Pridgeon & M.W.Chase	R					LC	
<i>Dactylorhiza</i> × <i>rupertii</i> (M. Schulze) Borsos et Soó							
<i>Dactylorhiza</i> × <i>rupertii</i> f. <i>rubra</i> (M. Schulze) Borsos et Soó							
<i>Epipactis atrorubens</i> (Hoffm.) Besser	R					LC	
<i>Epipactis bucegensis</i> N. Angheliescu, L. Balogh et Mih. Balogh							
<i>Epipactis helleborine</i> (L.) Crantz subsp. <i>helleborine</i>							
<i>Epipactis leptochila</i> (Godfery) Godfery subsp. <i>leptochila</i>							
<i>Epipactis microphylla</i> (Ehrh.) Sw.	R		R				
<i>Epipactis palustris</i> (L.) Crantz	R				LC	LC	
<i>Epipactis purpurata</i> Sm. subsp. <i>purpurata</i>							
<i>Goodyera repens</i> (L.) R.Br.	R	R	R			LC	
<i>Gymnadenia conopsea</i> (L.) R.Br.	R					LC	
<i>Gymnadenia miniata</i> (Crantz) Hayek	V/R	E	E				
<i>Gymnadenia nigra</i> (L.) Rchb.f.	V/R	E	E			LC	
<i>Gymnadenia odoratissima</i> (L.) Rich.	R				LC	LC	
<i>Himantoglossum calcaratum</i> subsp. <i>rumelicum</i> (H.Baumann & R.Lorenz)	R	E	R			LC	(Annex I)
<i>Limodorum abortivum</i> (L.) Sw.	R	R	V			LC	
<i>Neotinea tridentata</i> (Scop.) R.M.Bateman, Pridgeon & M.W.Chase	R					LC	
<i>Neotinea ustulata</i> (L.) R.M.Bateman, Pridgeon & M.W.Chase	R					LC	
<i>Neottia cordata</i> (L.) Rich.	R	R			LC	LC	
<i>Neottia nidus-avis</i> (L.) Rich.	R				LC	LC	
<i>Neottia ovata</i> (L.) Hartm.	R	R				LC	
<i>Ophrys holosericea</i> (Burm.f.)	R	E	E				

Valid Name (POWO, 2024)	Oltean et al. 1994	Boşcaiu et al. 1994	Dihoru & Dihoru 1993-1994	Dihoru & Negrea n 2009	IUCN Global	IUCN European	Habitats Directive
Greuter subsp. holosericea							
<i>Ophrys sphegodes</i> Mill.	R	E	E	CR		LC	
<i>Ophrys</i> × <i>minuticauda</i> Duffort							
<i>Orchis cornuta</i> v. <i>banatica</i>							
<i>Orchis mascula</i> subsp. <i>speciosa</i> (Mutel) Hegi	R						
<i>Orchis militaris</i> L.	R					LC	
<i>Orchis militaris</i> L. subsp. <i>militaris</i>							
<i>Orchis purpurea</i> Huds.	R					LC	
<i>Orchis purpurea</i> Huds. subsp. <i>purpurea</i>							
<i>Orchis simia</i> Lam.	R		V	EN		LC	
<i>Orchis</i> × <i>angusticuris</i> Franch.							
<i>Orchis</i> × <i>lorenziana</i> Brügger nothosubsp. <i>kisslingii</i> (Beck) Potucek							
<i>Platanthera bifolia</i> (L.) Rich.	R					LC	
<i>Platanthera chlorantha</i> (Custer) Rchb.	R					LC	
<i>Pseudorchis albida</i> (L.) Á.Löve & D.Löve	R					LC	
<i>Spiranthes spiralis</i> (L.) Chevall.	R					LC	
<i>Traunsteinera globosa</i> (L.) Rchb.	R					LC	
× <i>Pseudadenia schweinfurthii</i> (Hegelme. Ex A. Kern.) P. F. Hunt							
× <i>Pseudadenia vitosana</i> (H. Baumann) O. Gerbaud et W. Schmid							
× <i>Pseudorhiza nieschalkii</i> (Senghas) P. F. Hunt nothosubsp. <i>sicolorum</i> H. Kertész et N. Anghelescu							